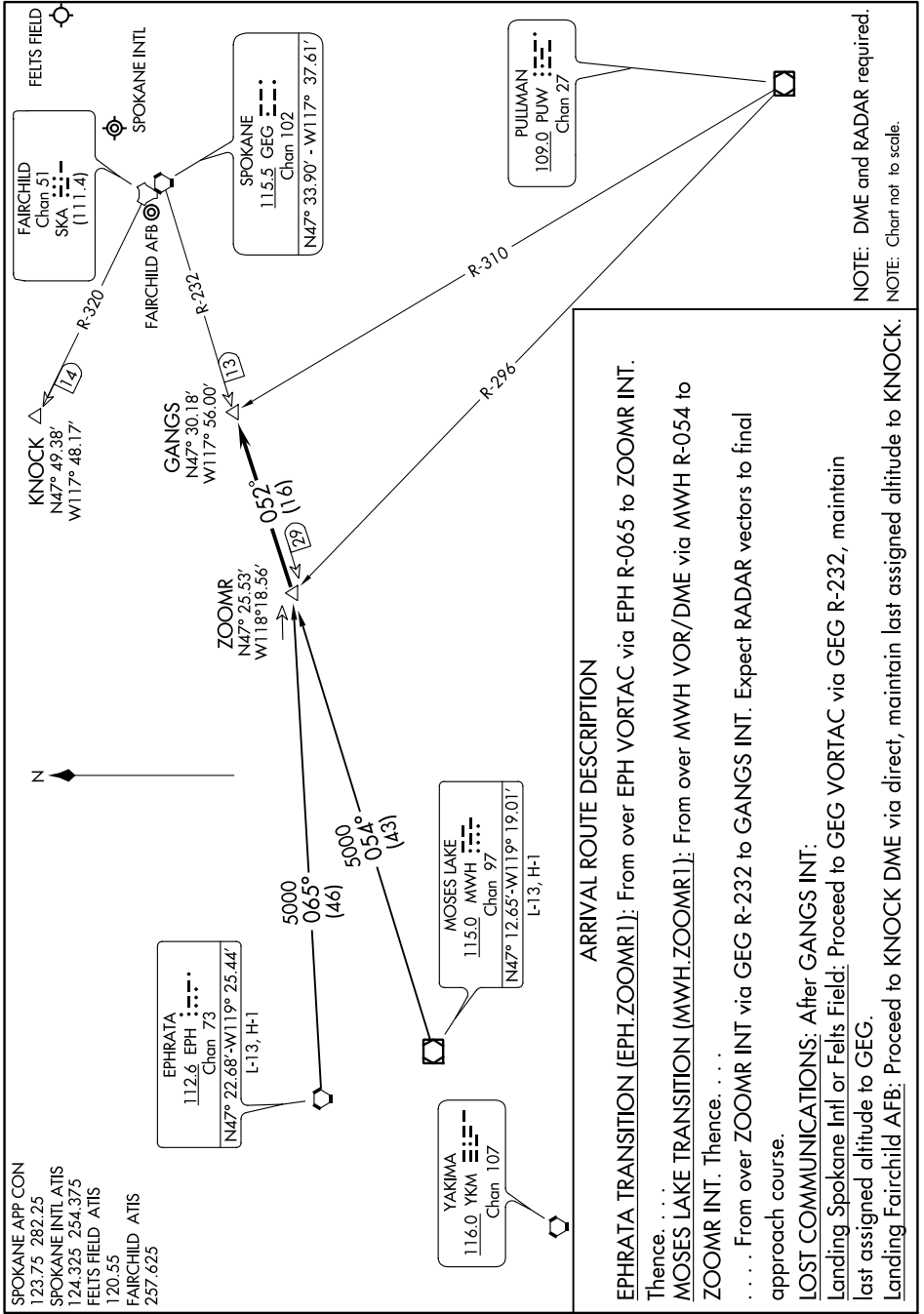


# ZOOMR ONE ARRIVAL (ZOOMR.ZOOMR1)

SPOKANE, WASHINGTON

NW-1, 12 SEP 2019 to 10 OCT 2019



NOTE: DME and RADAR required.  
 NOTE: Chart not to scale.

**ARRIVAL ROUTE DESCRIPTION**

EPHRATA TRANSITION (EPH.ZOOMR1): From over EPH VORTAC via EPH R-065 to ZOOMR INT. Thence, . . .

MOSES LAKE TRANSITION (MWH.ZOOMR1): From over MWH VOR/DME via MWH R-054 to ZOOMR INT. Thence, . . .

. . . From over ZOOMR INT via GEG R-232 to GANGS INT. Expect RADAR vectors to final approach course.

LOST COMMUNICATIONS: After GANGS INT: Landing Spokane Intl or Felts Field: Proceed to GEG VORTAC via GEG R-232, maintain last assigned altitude to GEG. Landing Fairchild AFB: Proceed to KNOCK DME via direct, maintain last assigned altitude to KNOCK.

# ZOOMR ONE ARRIVAL (ZOOMR.ZOOMR1)

SPOKANE, WASHINGTON

NW-1, 12 SEP 2019 to 10 OCT 2019