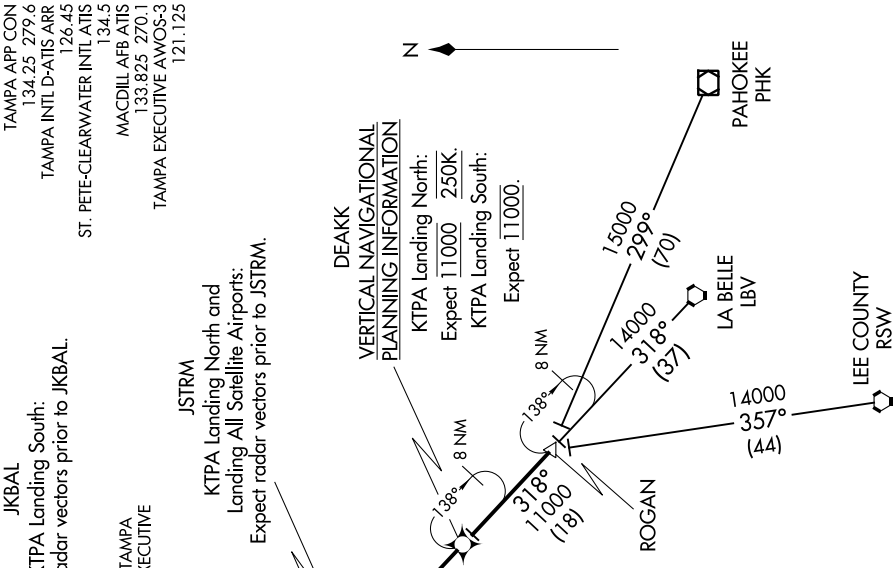


# DEAKK FIVE ARRIVAL (RNAV)

SE-3: 12 SEP 2019 to 10 OCT 2019



NOTE: Chart not to scale.

- NOTE: Radar required.
- NOTE: RNAV 1.
- NOTE: DME/DME/IRU or GPS required.
- NOTE: Turbojet and Turboprop aircraft only.
- NOTE: Primary landing Rwy 1L/R, 19L/R.
- NOTE: For non-GPS equipped aircraft: LBV transition: SRQ and LAL must be operational; RSW transition: SRQ, LAL, RSW, and LBV must be operational.

**LA BELLE TRANSITION (LBV DEAKK5):**  
**LEE COUNTY TRANSITION (RSW/DEAKK5):**  
**PAHOKEE TRANSITION (PHK/DEAKK5):**

From ROGAN on track 318° to DEAKK. Thence on assigned runway transition.

**Landing North:** From over DEAKK on track 318° to JSTRM, then on heading 277°. Expect RADAR vectors.

**Landing South:** From over DEAKK on track 318° to JSTRM, then on track 006° to GUZDA, then on track 007° to JKBAL, then left turn on heading 277°. Expect RADAR vectors.

**LOST COMMUNICATIONS:**  
**KTPA Landing South:** Continue track to JKBAL, then turn left to intercept the Rwy 19L final approach course, conduct approach.  
**KTPA Landing North:** Continue track to JSTRM, then turn right to intercept the Rwy 1L final approach course, conduct approach.

SE-3: 12 SEP 2019 to 10 OCT 2019

# DEAKK FIVE ARRIVAL (RNAV)