

LOC/DME I-TUS 111.7 Chan 54	APP CRS 303°	Rwy Idg TDZE 10996 2643 Apt Elev 2643
---	------------------------	---

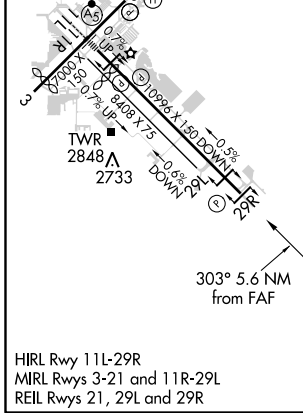
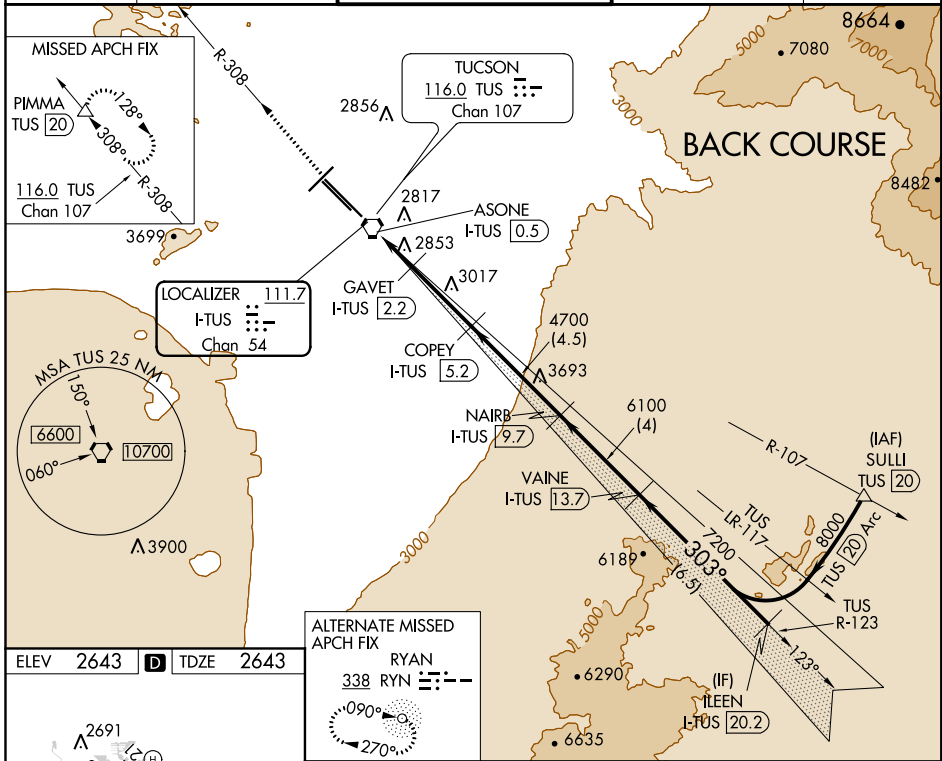
LOC BC RWY 29R

TUCSON INTL (TUS)

DME required for procedure entry. DME required.

MISSED APPROACH: Climb to 6800 on TUS VORTAC R-308 to PIMMA/TUS VORTAC 20 DME and hold.

ATIS 123.8 279.65	TUCSON APP CON 119.4 318.1	TUCSON TOWER 118.3 257.8	GND CON 124.4 348.6	CLNC DEL 126.65 326.2
-----------------------------	--------------------------------------	------------------------------------	-------------------------------	---------------------------------



ELEV 2643	D	TDZE 2643
ALTERNATE MISSED APCH FIX RYAN 338 RYN	RYAN 338 RYN	
6800 TUS R-308	PIMMA △	Use I-TUS DME when on the localizer course. VGSi and descent angles not coincident (VGSi Angle 3.00/TCH 81). Disregard glide slope indications.
ASONE I-TUS 0.5	GAVET I-TUS 2.2	COPEY I-TUS 5.2
NAIRB I-TUS 9.7	VAINÉ I-TUS 13.7	ILEEN I-TUS 20.2
3640	4700	6100
303°	7200	8000
0.9	1.7	3
4.5	4	6.5

CATEGORY	A	B	C	D	E
S-29R	3140-1	497 (500-1)	3140-1 $\frac{3}{8}$	497 (500-1 $\frac{3}{8}$)	
CIRCLING	3160-1 517 (600-1)	3220-1 577 (600-1)	3220-1 $\frac{1}{2}$ 577 (600-1 $\frac{1}{2}$)	3220-2 577 (600-2)	3800-3 1157 (1200-3)

TUCSON, ARIZONA
Amdt 8B 20JUN19

32°07'N-110°56'W

TUCSON INTL (TUS) LOC BC RWY 29R

SW-4, 12 SEP 2019 to 10 OCT 2019

SW-4, 12 SEP 2019 to 10 OCT 2019