

APP CRS 213°	Rwy Idg TDZE Apt Elev	6000 2573 2643
------------------------	-----------------------------	---

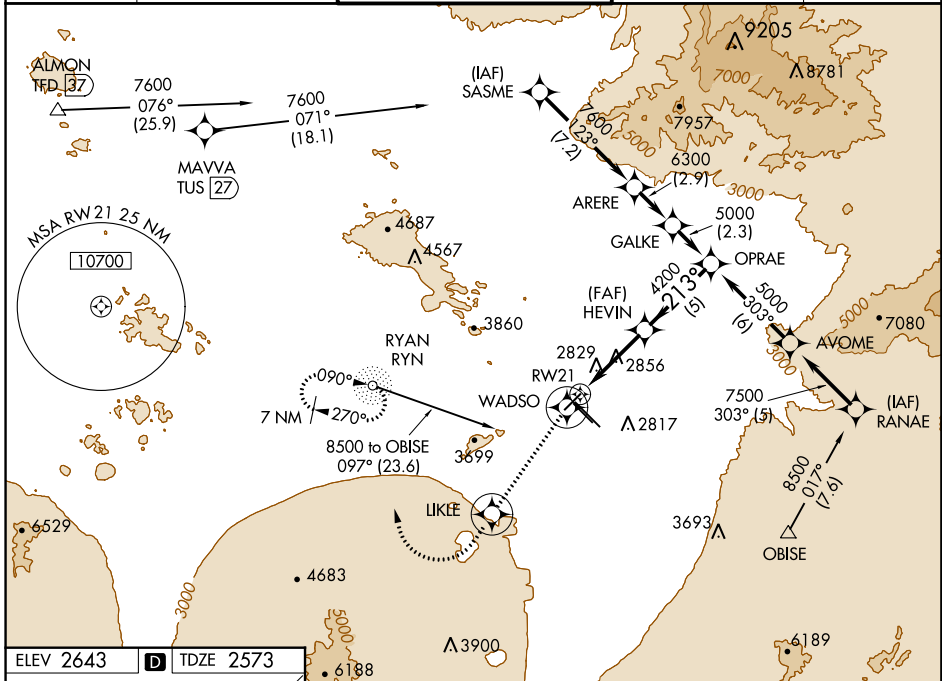
RNAV (GPS) RWY 21

TUCSON INTL (TUS)

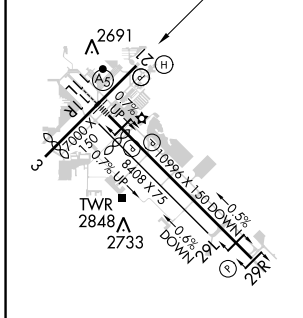
NA For uncompensated Baro-VNAV systems, LNAV/VNAV NA below -20°C (-4°F) or above 43°C (111°F). DME/DME RNP-0.3 NA. Rwy 21 helicopter visibility reduction below ¾ SM NA.

MISSED APPROACH: Climb to 6000 on 213° course to WADSO, then on 203° course to LIKLE, then climbing right turn direct RYN NDB and hold.

ATIS 123.8 279.65	TUCSON APP CON 119.4 318.1	TUCSON TOWER 118.3 257.8	GND CON 124.4 348.6	CLNC DEL 126.65 326.2
-----------------------------	--------------------------------------	------------------------------------	-------------------------------	---------------------------------

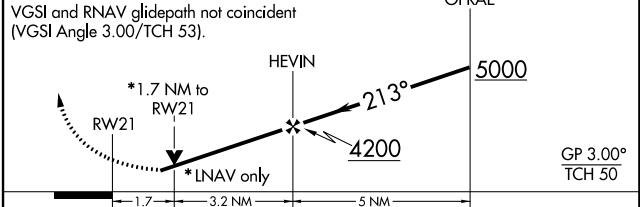


ELEV 2643	D	TDZE 2573
-----------	----------	-----------



HIRL Rwy 11L-29R
MIRL Rwy 3-21 and 11R-29L
REIL Rwy 21, 29L and 29R

6000 ↑ 213° crs	WADSO	LIKLE	RYN	Procedure Turn NA
--------------------------	-------	-------	-----	-------------------------



CATEGORY	A	B	C	D
GLS PA DA	NA			
LNAV/VNAV DA	3141-2		568 (600-2)	
LNAV MDA	3160-1	587 (600-1)	3160-1½ 587 (600-1½)	3160-1¾ 587 (600-1¾)
CIRCLING	3160-1 517 (600-1)	3220-1 577 (600-1)	3220-1½ 577 (600-1½)	3220-2 577 (600-2)