

APP CRS 030°
 Rwy Idg 6150
 TDZE 2572
 Apt Elev 2643

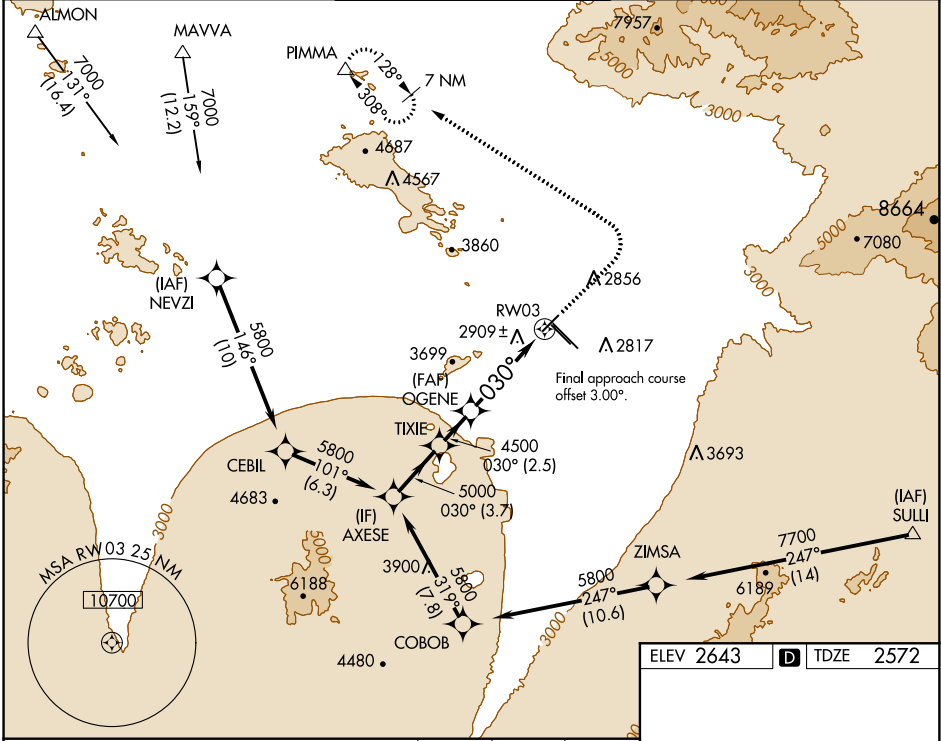
RNAV (GPS) RWY 3

TUCSON INTL (TUS)

▼ For uncompensated Baro-VNAV systems, LNAV/VNAV NA below -20°C (-4°F) or above 27°C (80°F). DME/DME RNP-0.3 NA. Helicopter visibility reduction below 3/4 SM NA.

MISSED APPROACH: Climb to 3500 then climbing left turn to 6500 direct PIMMA and hold.

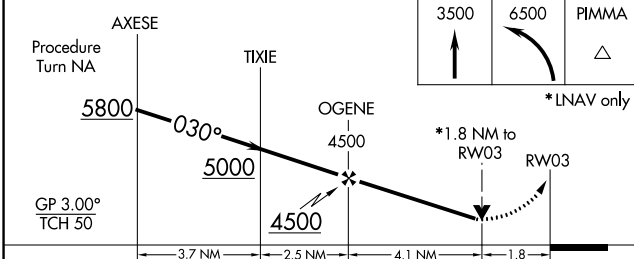
ATIS 123.8 279.65	TUCSON APP CON 119.4 318.1	TUCSON TOWER 118.3 257.8	GND CON 124.4 348.6	CLNC DEL 126.65 326.2
-----------------------------	--------------------------------------	------------------------------------	-------------------------------	---------------------------------



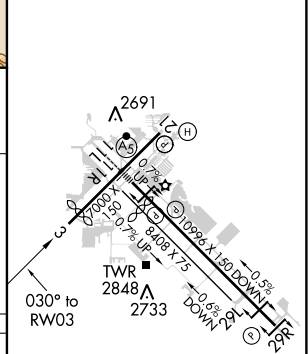
SW-4, 12 SEP 2019 to 10 OCT 2019

SW-4, 12 SEP 2019 to 10 OCT 2019

ELEV 2643 D TDZE 2572



CATEGORY	A	B	C	D
LNAV/ VNAV DA	3284-2½		712 (700-2½)	
LNAV MDA	3180-1	608 (600-1)	3180-1¾	608 (600-1¾)
CIRCLING	3180-1 537 (600-1)	3220-1 577 (600-1)	3220-1¾ 577 (600-1¾)	3220-2 577 (600-2)



HIRL Rwy 11L-29R
 MIRL Rwy 3-21 and 11R-29L
 REIL Rwy 21, 29L and 29R