

# RNAV (RNP) Y RWY 29R

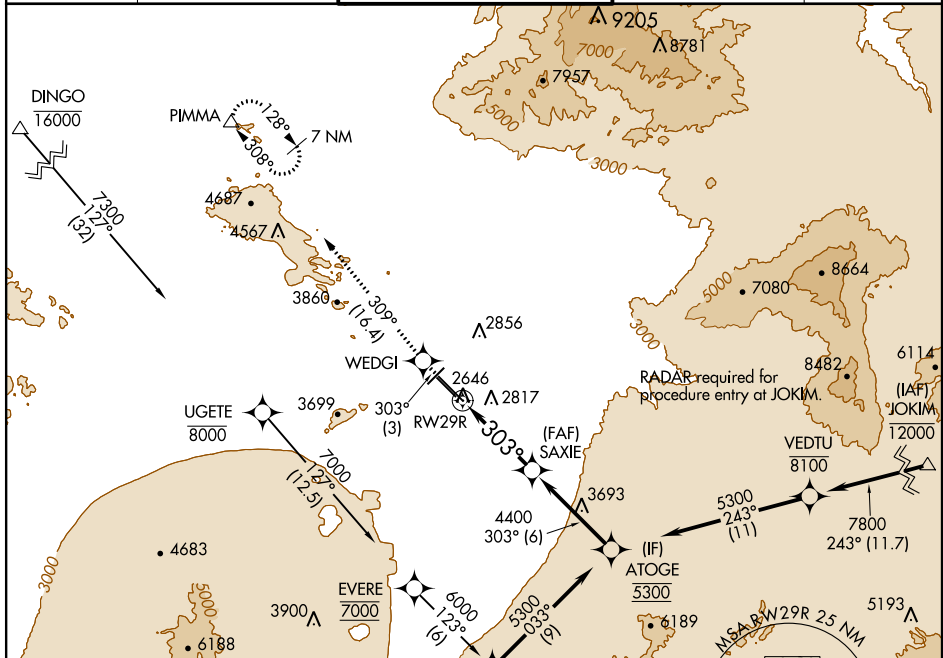
TUCSON INTL (TUS)

APP CRS	Rwy Idg	<b>10996</b>
<b>303°</b>	TDZE	<b>2643</b>
	Apt Elev	<b>2643</b>

**NA** When VGSI inop, procedure NA at night. GPS required. For uncompensated Baro-VNAV systems, procedure NA below -5°C (23°F) or above 43°C (110°F). Rwy 29R helicopter visibility reduction below 3/4 SM NA.

**MISSO APPROACH:** Climb to 6500 on 303° track to WEDGI 309° track to PIMMA and hold.

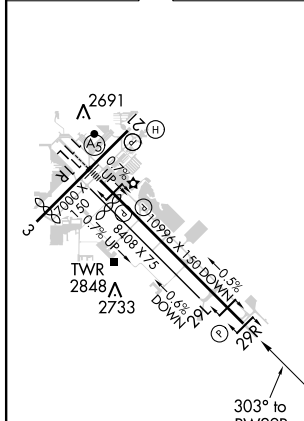
ATIS	TUCSON APP CON	TUCSON TOWER	GND CON	CLNC DEL
<b>123.8 279.65</b>	<b>119.4 318.1</b>	<b>118.3 257.8</b>	<b>124.4 348.6</b>	<b>126.65 326.2</b>



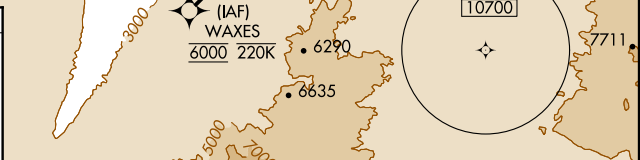
SW-4, 12 SEP 2019 to 10 OCT 2019

SW-4, 12 SEP 2019 to 10 OCT 2019

ELEV 2643	<b>D</b>	TDZE 2643
-----------	----------	-----------



HIRL Rwy 11L-29R  
MIRL Rws 3-21 and 11R-29L  
REIL Rws 21, 29L and 29R



6500	WEDGI	309° tr	PIMMA	VGSI and RNAV glidepath not coincident (VGSI Angle 3.00/TCH 81).	ATOGE	Procedure Turn NA
303° tr				SAXIE	5300	
				4400		GP 3.00° TCH 53
				5.3 NM	6 NM	

CATEGORY	A	B	C	D
RNP 0.30 DA	3137-1 5/8 494 (500-1%)			

**AUTHORIZATION REQUIRED**