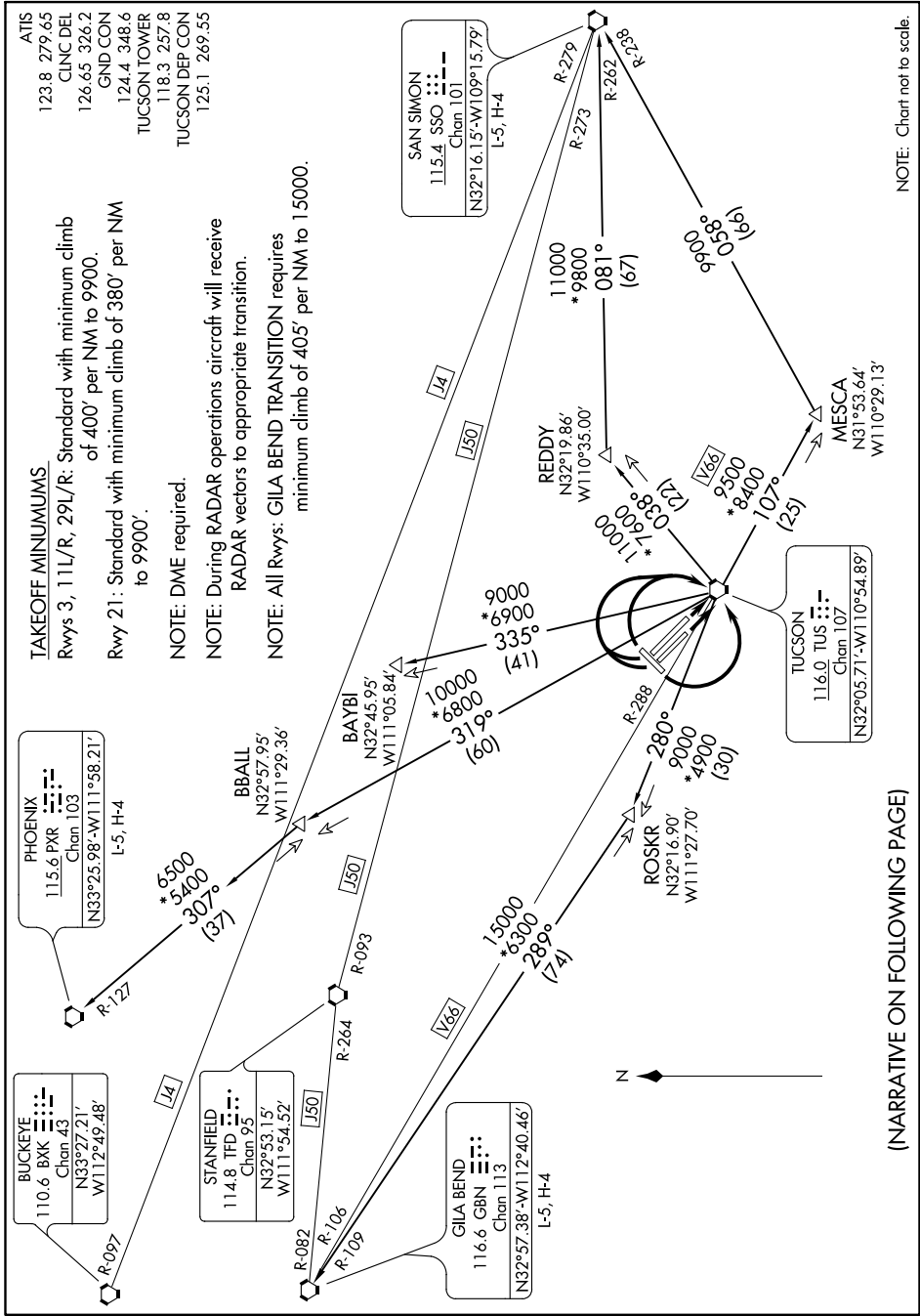


TUCSON EIGHT DEPARTURE

AL-430 (FAA)

TUCSON INTL (TUS)
TUCSON, ARIZONA

SW-4, 12 SEP 2019 to 10 OCT 2019



ATIS
123.8 279.65
CLNC DEL
126.65 326.2
GND CON
124.4 348.6
TUCSON TOWER
118.3 257.8
TUCSON DEP CON
125.1 269.55

TAKEOFF MINIMUMS.
Rwys 3, 11L/R, 29L/R: Standard with minimum climb of 400' per NM to 9900'.
Rwy 21: Standard with minimum climb of 380' per NM to 9900'.

NOTE: DME required.
NOTE: During RADAR operations aircraft will receive RADAR vectors to appropriate transition.
NOTE: All Rwys: GILA BEND TRANSITION requires minimum climb of 405' per NM to 15000'.

NOTE: Chart not to scale.

(NARRATIVE ON FOLLOWING PAGE)

SW-4, 12 SEP 2019 to 10 OCT 2019

TUCSON EIGHT DEPARTURE

TUCSON, ARIZONA
TUCSON INTL (TUS)