

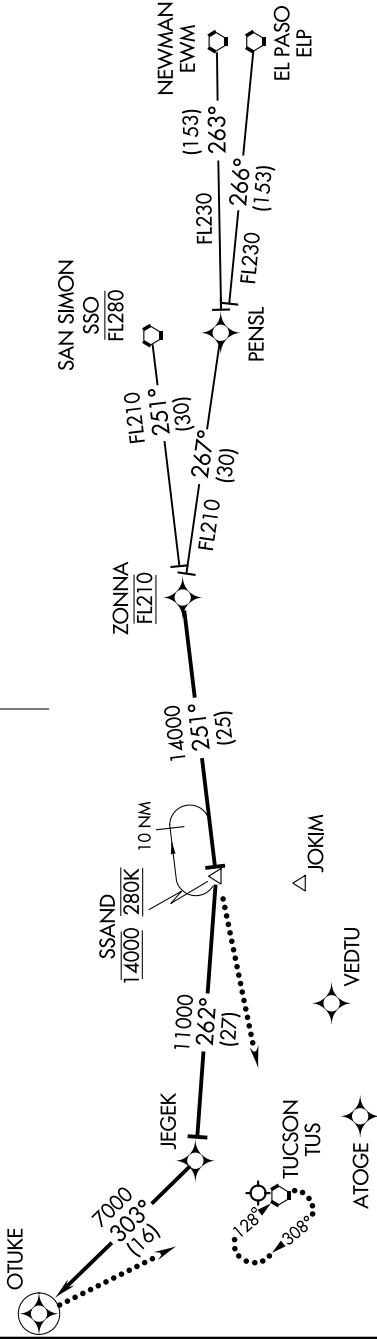
ZONNA ONE ARRIVAL (RNAV)

ST-430 (FAA)

TUCSON INTL (TUS)
TUCSON, ARIZONA

SW-4, 12 SEP 2019 to 10 OCT 2019

ATIS 123.8 279.65
TUCSON APP CON 119.4 318.1
TUCSON TOWER 118.3 257.8
GND CON 124.4 348.6



ARRIVAL ROUTE DESCRIPTION

EL PASO TRANSITION (ELP.ZONNA1)
NEWMAN TRANSITION (EWM.ZONNA1)
SAN SIMON TRANSITION (SSO.ZONNA1)

From ZONNA via 251° track to SSAND, cross SSAND at 14000 and 280K, then via 262° track to JEJEK, then via 303° track to OTUKE. Expect radar vectors to final approach course.

LOST COMMUNICATIONS

RWY 29R: At SSAND proceed direct TUS VORTAC and hold, maintain 14000.
RWY 11L: Execute RNAV (GPS) Z RWY 11L approach. If unable, at OTUKE proceed direct TUS VORTAC and hold, maintain 14000.

- NOTE: RADAR required.
- NOTE: All Rwys: expect radar vectors to final approach.
- NOTE: RNAV 1.
- NOTE: DME/DME/IRU, or GPS required.
- NOTE: For turbojets only.
- NOTE: All transitions: for non-GPS equipped aircraft DUG, TFD, and TUS must be operational.
- NOTE: Landing Rwy 29: Expect radar vectors after SSAND to final approach course.

NOTE: Chart not to scale.

ZONNA ONE ARRIVAL (RNAV)

TUCSON, ARIZONA
TUCSON INTL (TUS)

SW-4, 12 SEP 2019 to 10 OCT 2019