

OAK HARBOR, WASHINGTON

HI-TACAN RWY 14

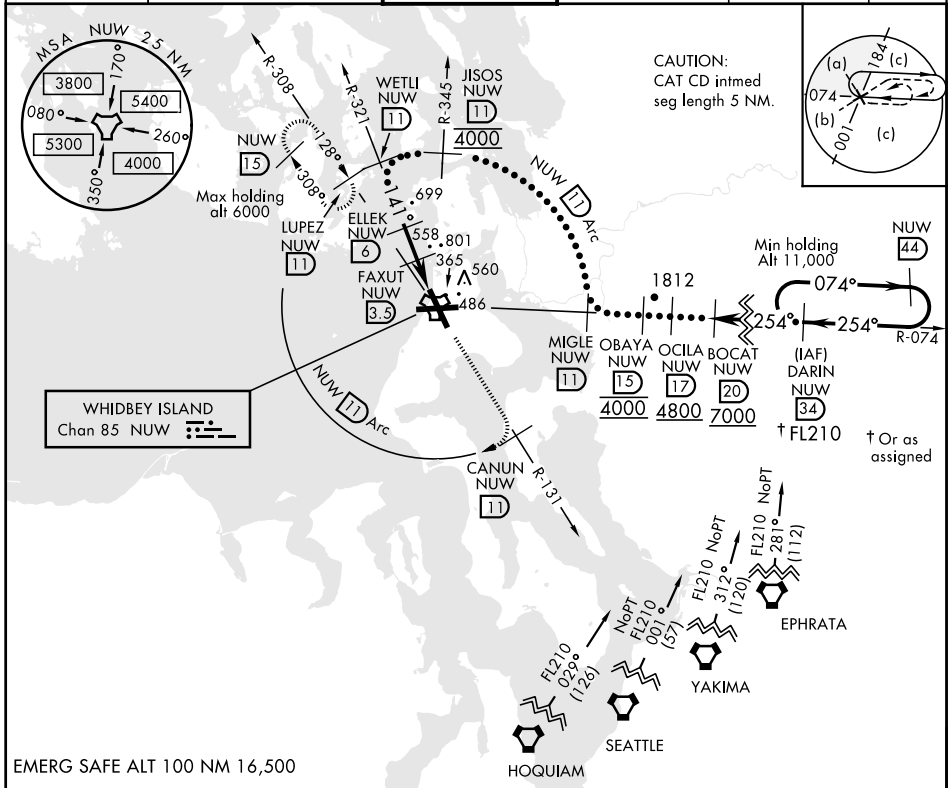
TACAN NUW Chan 85	APCH CRS 141°	Rwy ldg TDZE 39 Arpt Elev 47
--------------------------	----------------------	---

JAL-451 [USN] WHIDBEY ISLAND NAS (AULT FLD) (KNUW)

ALSF-2 MISSED APPROACH: Climb to 4000 via NUW TACAN R-131 to CANUN, then arc SW of NUW TACAN via 11 DME Arc to LUPEZ and hold.

*When ALS inop, increase CAT CDE vis to 1 1/4 miles.

ATIS 134.15 281.5	WHIDBEY APP CON 120.7 270.8 EAST 118.2 285.65 WEST	WHIDBEY TOWER 127.9 340.2	GND CON 121.75 336.4	CLNC DEL 135.1 379.9	ASR/PAR
-----------------------------	--	-------------------------------------	--------------------------------	--------------------------------	---------



WETLI R-321 (11) ELLEK (6) FAXUT (3.5) JOVPO (1.5) TACAN (0.8)	4000	CANUN (11)	NUW (11) Arc	ELEV 47	TDZE 39												
	3000 1800 1020	141° 2.86° TCH 55	2.5 NM 2.7 NM	141° to TACAN 8000 x 200 TWR 167	TDZL/CL Rwy 14 HIRL Rwy 7-25, 14-32												
<table border="1"> <tr> <th>CATEGORY</th> <th>C</th> <th>D</th> <th>E</th> </tr> <tr> <td>S-14 *</td> <td>460-3/4</td> <td>421 (500-3/4)</td> <td></td> </tr> <tr> <td>CIRCLING</td> <td>900-2 1/2 853 (900-2 1/2)</td> <td>900-2 3/4 853 (900-2 3/4)</td> <td>1200-3 1153 (1200-3)</td> </tr> </table>	CATEGORY	C	D	E	S-14 *	460-3/4	421 (500-3/4)		CIRCLING	900-2 1/2 853 (900-2 1/2)	900-2 3/4 853 (900-2 3/4)	1200-3 1153 (1200-3)					
CATEGORY	C	D	E														
S-14 *	460-3/4	421 (500-3/4)															
CIRCLING	900-2 1/2 853 (900-2 1/2)	900-2 3/4 853 (900-2 3/4)	1200-3 1153 (1200-3)														

OAK HARBOR, WASHINGTON

48°21'N-122°39'W

WHIDBEY ISLAND NAS (AULT FLD) (KNUW)

Amdt 1 02MAR17

HI-TACAN RWY 14

NW-1, 12 SEP 2019 to 10 OCT 2019

NW-1, 12 SEP 2019 to 10 OCT 2019