

OAK HARBOR, WASHINGTON

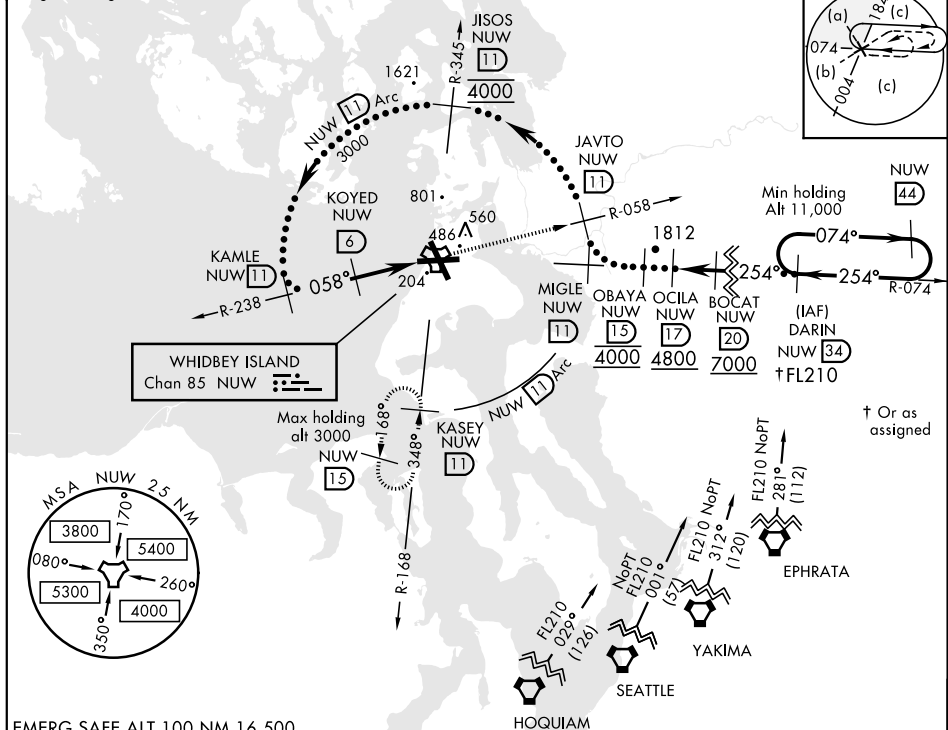
HI-TACAN RWY 7

TACAN NUW Chan 85	APCH CRS 058°	Rwy ldg TDZE 25 Arprt Elev 47	JAL-451 [USN]	WHIDBEY ISLAND NAS (AULT FLD) (KNUW)
-----------------------------	-------------------------	---	---------------	--------------------------------------

▼ MISSED APPROACH: Climb to 3000 via NUW TACAN R-058 to JAVTO, then arc SE of NUW via 11 DME Arc to KASEY and hold.

ATIS 134.15 281.5	WHIDBEY APP CON 120.7 270.8 EAST 118.2 285.65 WEST	WHIDBEY TOWER 127.9 340.2	GND CON 121.75 336.4	CLNC DEL 135.1 379.9	ASR/PAR
-----------------------------	--	-------------------------------------	--------------------------------	--------------------------------	---------

CAUTION: CAT CDE intermediate segment length 5 NM.



EMERG SAFE ALT 100 NM 16,500

KAMLE R-238 3000	KOYED 6	JAVTO 11	NUW 11 Arc	ELEV 47	TDZE 25
CATEGORY	C	D	E		
S-7	420-1½	395 (400-1½)			
CIRCLING	900-2½ 853 (900-2½)	900-2¾ 853 (900-2¾)	1200-3 1153 (1200-3)	TDZL/CL Rwy 14 HIRL Rwy 7-25, 14-32	

OAK HARBOR, WASHINGTON 48°21'N-122°39'W WHIDBEY ISLAND NAS (AULT FLD) (KNUW)

Amdt 1 02MAR17

HI-TACAN RWY 7

NW-1, 12 SEP 2019 to 10 OCT 2019

NW-1, 12 SEP 2019 to 10 OCT 2019