

OAK HARBOR, WASHINGTON

HI-TACAN Z RWY 25

TACAN NUW Chan 85	APCH CRS 254°	Rwy ldg TDZE 8000 Arprt Elev 47
--------------------------	----------------------	--

JAL-451 [USN]

WHIDBEY ISLAND NAS (AULT FLD) (KNUW)

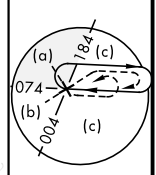
V * When ALS inop, increase CAT CDE vis to 2 miles.



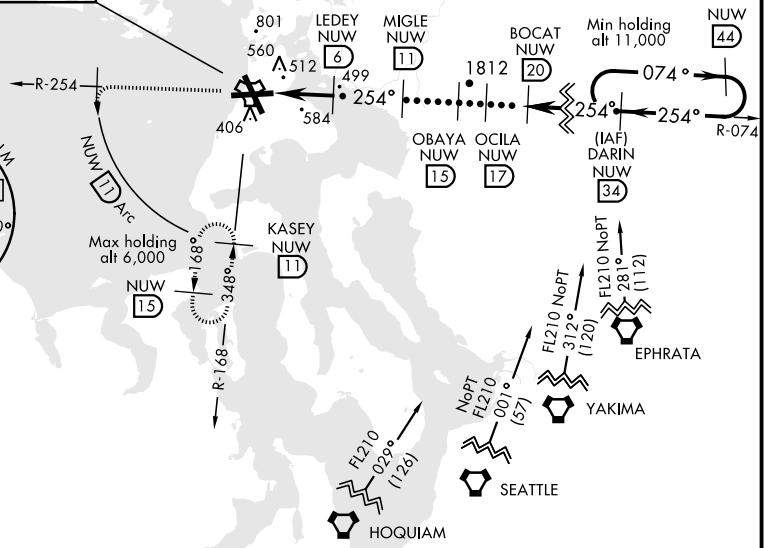
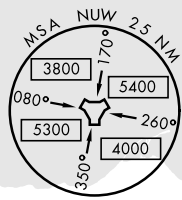
MISSED APPROACH: Climb to 3000 via NUW TACAN R-254 to NEDOE, then arc SW of NUW via 11 DME arc to KASEY and hold.

ATIS 134.15 281.5	WHIDBEY APP CON 120.7 270.8 EAST 118.2 285.65 WEST	WHIDBEY TOWER 127.9 340.2	GND CON 121.75 336.4	CLNC DEL 135.1 379.9	ASR/PAR
--------------------------	--	----------------------------------	-----------------------------	-----------------------------	---------

CAUTION:
Intmed seg length 5 NM.



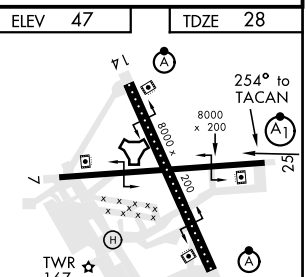
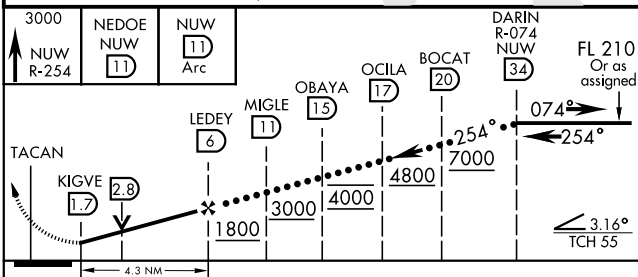
WHIDBEY ISLAND
Chan 85 NUW



NW-1, 12 SEP 2019 to 10 OCT 2019

NW-1, 12 SEP 2019 to 10 OCT 2019

EMERG SAFE ALT 100 NM 16,500



CATEGORY	C	D	E
S-25*	740-1 5/8	712 (700-1 5/8)	
CIRCLING	900-2 1/2 853 (800-2 1/2)	900-2 3/4 853 (800-2 3/4)	1200-3 1153 (1200-3)

ELEV	47	TDZE	28
TDZL/CL Rwy 14	HIRL Rwy 7-25, 14-32		

OAK HARBOR, WASHINGTON

48°21'N-122°39'W

WHIDBEY ISLAND NAS (AULT FLD) (KNUW)

Amdt 1 02MAR17

HI-TACAN Z RWY 25