

OAK HARBOR, WASHINGTON

ILS or LOC/DME RWY 14

LOC I-NUW 110.1	APCH CRS 137°	Rwy ldg 8000 TDZE 39 Arpt Elev 47
---------------------------	-------------------------	--

AL-451 [USN]

WHIDBEY ISLAND NAS (AULT FLD) (KNUW)

▼ * When ALS inop, increase CAT ABCDE vis to ¾ mile.
 ** When ALS inop, increase CAT ABCDE vis to 1 mile.



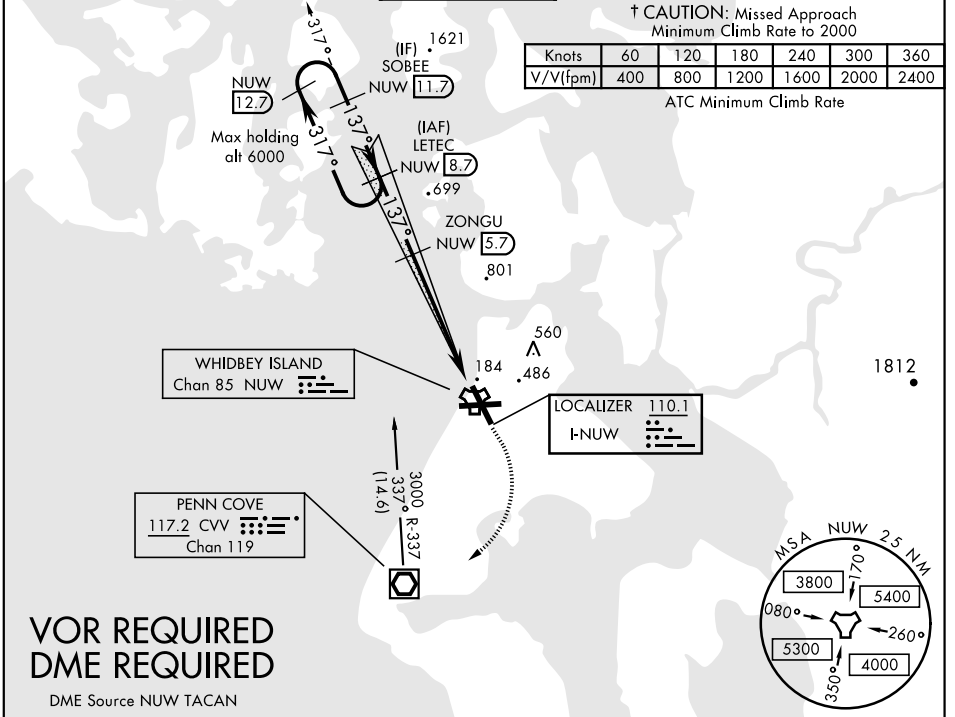
† MISSED APPROACH: Climb to 2000 via hdg 137°, then climbing right turn to 3000, direct CVV VOR/DME, then via CVV R-337 to LETEC and hold.

ATIS 134.15 281.5	WHIDBEY APP CON 120.7 270.8 EAST 118.2 285.65 WEST	WHIDBEY TOWER 127.9 340.2	GND CON 121.75 336.4	CLNC DEL 135.1 379.9	ASR/PAR
-----------------------------	--	-------------------------------------	--------------------------------	--------------------------------	---------

† CAUTION: Missed Approach Minimum Climb Rate to 2000

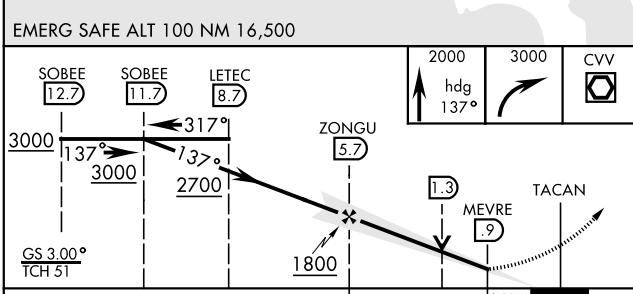
Knots	60	120	180	240	300	360
V/V(fpm)	400	800	1200	1600	2000	2400

ATC Minimum Climb Rate

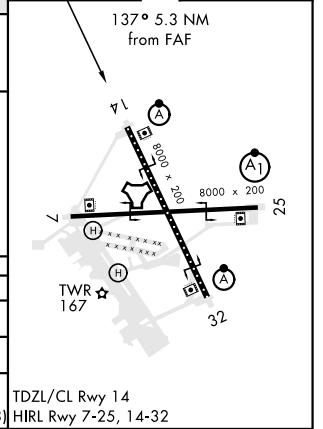


NW-1, 12 SEP 2019 to 10 OCT 2019

NW-1, 12 SEP 2019 to 10 OCT 2019



ELEV 47	TDZE 39
---------	---------



CATEGORY	A	B	C	D	E
S-ILS 14 *	239-½		200 (200-½)		
S-LOC 14 **	400-½	361 (400-½)	400-¾	361 (400-¾)	
CIRCLING	760-1	800-1	900-2½	900-2¾	1200-3
	713 (800-1)	753 (800-1)	853 (900-2½)	853 (900-2¾)	153 (1200-3)

TDZ/CL Rwy 14
HIRL Rwy 7-25, 14-32

OAK HARBOR, WASHINGTON
Amdt 2 02MAR17

48°21'N-122°39'W

WHIDBEY ISLAND NAS (AULT FLD) (KNUW)

ILS or LOC/DME RWY 14