

PENN COVE FOUR DEPARTURE (CVV4.CVV)

WHIDBEY ISLAND NAS (AULT FLD) (KNUW)

OAK HARBOR, WASHINGTON

ATIS 134.15 281.5
 CLNC DEL
 135.1 379.9
 GND CON
 121.75 336.4
 WHIDBEY TOWER 220K
 127.9 340.2
 WHIDBEY DEP CON
 120.7 270.8 EAST
 118.2 285.65 WEST

JAL-451 [USN]

Rwy	Knots	60	120	180	240	300	360
25 (A)	V/V(fpm)	203	406	609	812	1015	1218
25 (B)	V/V(fpm)	257	514	771	1028	1285	1542

ATC Climb Rate

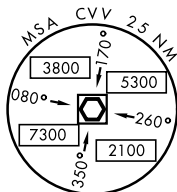
(A) to 2000

(B) to 7000

PROCEDURE NA FOR CAT E AIRCRAFT

PENN COVE
 117.2 CVV
 Chan 119

2000



A 2337

A 925

DIGGN L-1

7000

PAINÉ
 110.6 PAE
 Chan 43
 L-1, H-1

3000

NW-1, 12 SEP 2019 to 10 OCT 2019

NW-1, 12 SEP 2019 to 10 OCT 2019



DEPARTURE ROUTE DESCRIPTION

TAKE-OFF RWY 25: Climb to 900 feet on heading 249°, do not exceed 220 KIAS until 900. Then climbing left turn to intercept CVV VOR/DME R-320 to CVV. Cross CVV at or above 2000 feet. Thence...

...Via assigned transition or fly heading 158° and expect vectors to join assigned route.

DIGGN TRANSITION (CVV3.DIGGN): Via CVV R-166 to DIGGN, cross DIGGN at or above 7000 feet.

PAINÉ TRANSITION (CVV3.PAE): Via CVV R-118 to PAE VOR/DME. Cross PAE at or above 3000 feet.

PENN COVE FOUR DEPARTURE (CVV4.(CVV))

OAK HARBOR, WASHINGTON

WHIDBEY ISLAND NAS (AULT FLD) (KNUW)