

OAK HARBOR, WASHINGTON

# RNAV (GPS) RWY 14

WAAS CH 50004 W14A	APCH CRS 137°	Rwy ldg 8000 TDZE 39 Arprt Elev 47
--------------------------	------------------	---

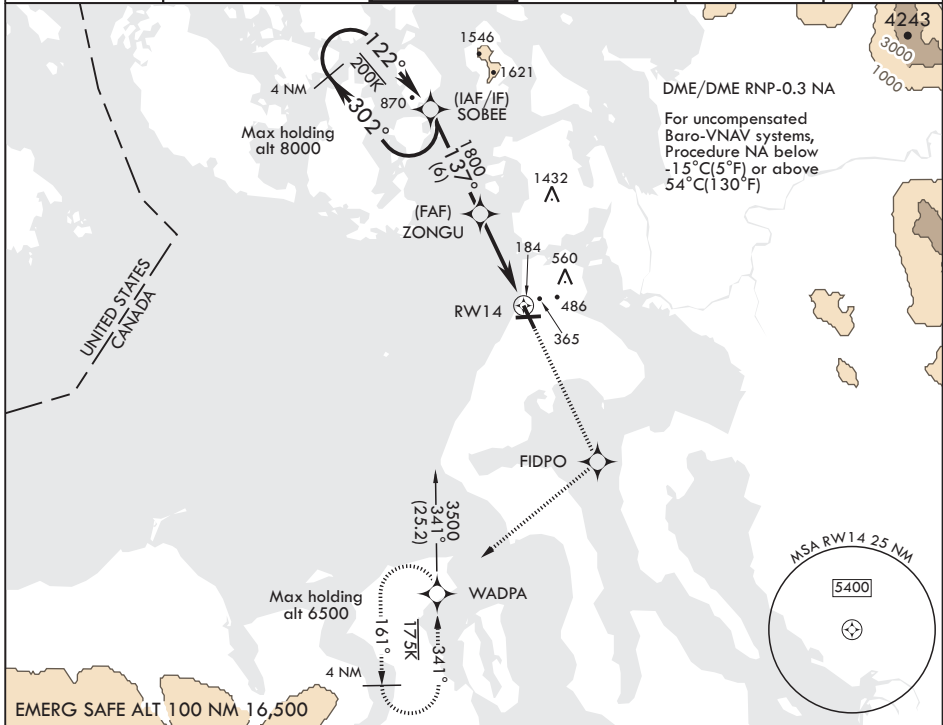
AL-451 (USN)

WHIDBEY ISLAND NAS (AULT FLD) (KNUW)

**V** \* When ALS inop, increase CAT ABCD vis to 3/4 mile.  
 \*\* When ALS inop, increase CAT A vis to 3/4 mile, CAT BC vis to 7/8 mile, CAT D vis to 1 mile.  
 \*\*\* When ALS inop, increase CAT AB vis to 1 mile, CAT CD to 1 1/8 miles.

**ALSF-2** MISSED APPROACH: Climb to 3500 direct FIDPO, then turn right direct WADPA and hold.

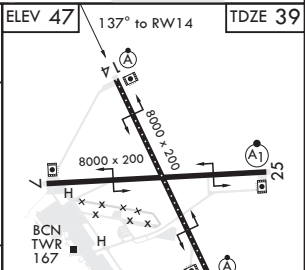
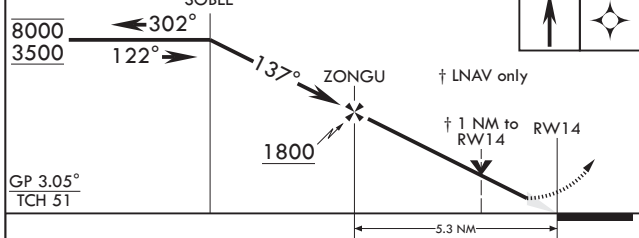
ATIS 134.15 281.5	APP CON/DEP CON 118.2 285.65 W 120.7 270.8 E	TOWER 127.9 340.2	GND CON 121.75 336.4	CLNC DEL 135.1 379.9	ASR/PAR
----------------------	--	----------------------	-------------------------	-------------------------	---------



NW-1, 12 SEP 2019 to 10 OCT 2019

NW-1, 12 SEP 2019 to 10 OCT 2019

8000 3500 SOBEE 137° to RWY 14 TDZE 39



CATEGORY	A	B	C	D
LPV DA*	239-1/2		200	(200-1/2)
LNAV/VNAV DA**	292-1/2 253 (300-1/2)	313-1/2 274 (300-1/2)	327-1/2 288 (300-1/2)	342-1/2 303 (700-1/2)
LNAV MDA***	420-1/2 381	(400-1/2)	420-5/8 381	(400-5/8)
<b>C</b> CIRCLING	700-1 653 (700-1)	800-1 753 (800-1)	900-2 1/2 853 (900-2 1/2)	900-2 3/4 853 (900-2 3/4)

OAK HARBOR, WASHINGTON 48°21'N - 122°39'W WHIDBEY ISLAND NAS (AULT FLD) (KNUW)

Amdt 2 02MAR17

# RNAV (GPS) RWY 14