

OAK HARBOR, WASHINGTON

# RNAV (GPS) RWY 25

WAAS CH 44487 W25A	APCH CRS 249°	Rwy ldg TDZE Arprt Elev	8000 28 47
--------------------------	------------------	-------------------------------	------------------

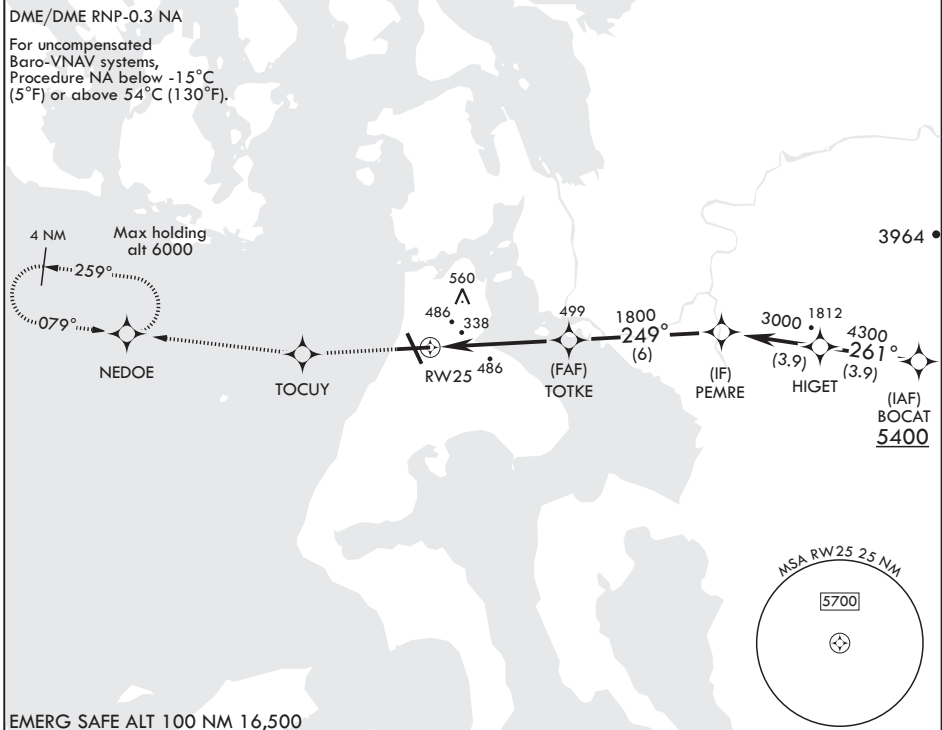
AL-451 (USN)

WHIDBEY ISLAND NAS (AULT FLD) (KNUW)

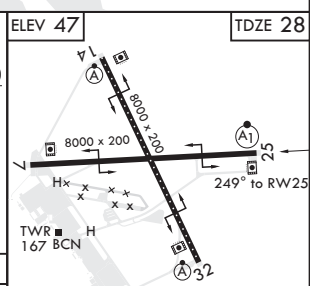
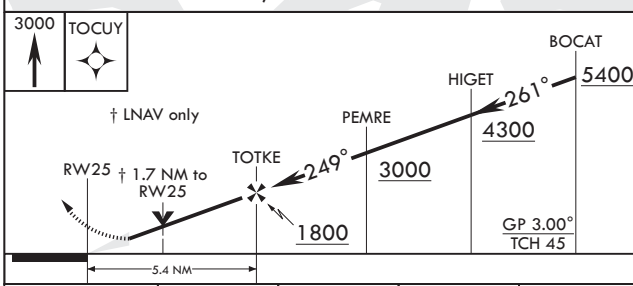
**V** \* When ALS inop, increase CAT ABCD vis to 3/4 mile.  
 \*\* When ALS inop, increase CAT ABCD vis to 2 1/2 miles.  
 \*\*\* When ALS inop, increase CAT AB vis to 1 mile, CAT CD vis to 1 3/4 miles.

**ALSF-1** MISSED APPROACH: Climb to 3000 direct TOCUY, track to NEDOE and hold. continue climb in hold to 3000.

ATIS 134.15 281.5	APP CON/DEP CON 118.2 285.65 W 120.7 270.8 E	TOWER 127.9 340.2	GND CON 121.75 336.4	CLNC DEL 135.1 379.9	ASR/PAR
----------------------	--	----------------------	-------------------------	-------------------------	---------



EMERG SAFE ALT 100 NM 16,500



CATEGORY	A	B	C	D
LPV DA*	228-1/2	200	(200-1/2)	
LNNAV/VNAV DA**	681-1 7/8	653	(700-1 7/8)	
LNNAV MDA***	620-1/2 592 (600-1/2)	620-1 1/4 592 (600-1/4)		
CIRCLING	700-1 653 (700-1)	800-1 753 (800-1)	900-2 1/2 853 (900-2 1/2)	900-2 3/4 853 (900-2 3/4)

HIRL all Rwys  
TDZL/CL Rwy 14

OAK HARBOR, WASHINGTON  
Amdt 1 02MAR17

48°21'N - 122°39'W

WHIDBEY ISLAND NAS (AULT FLD) (KNUW)

# RNAV (GPS) RWY 25

NW-1, 12 SEP 2019 to 10 OCT 2019

NW-1, 12 SEP 2019 to 10 OCT 2019