

OAK HARBOR, WASHINGTON

RNAV (GPS) RWY 32

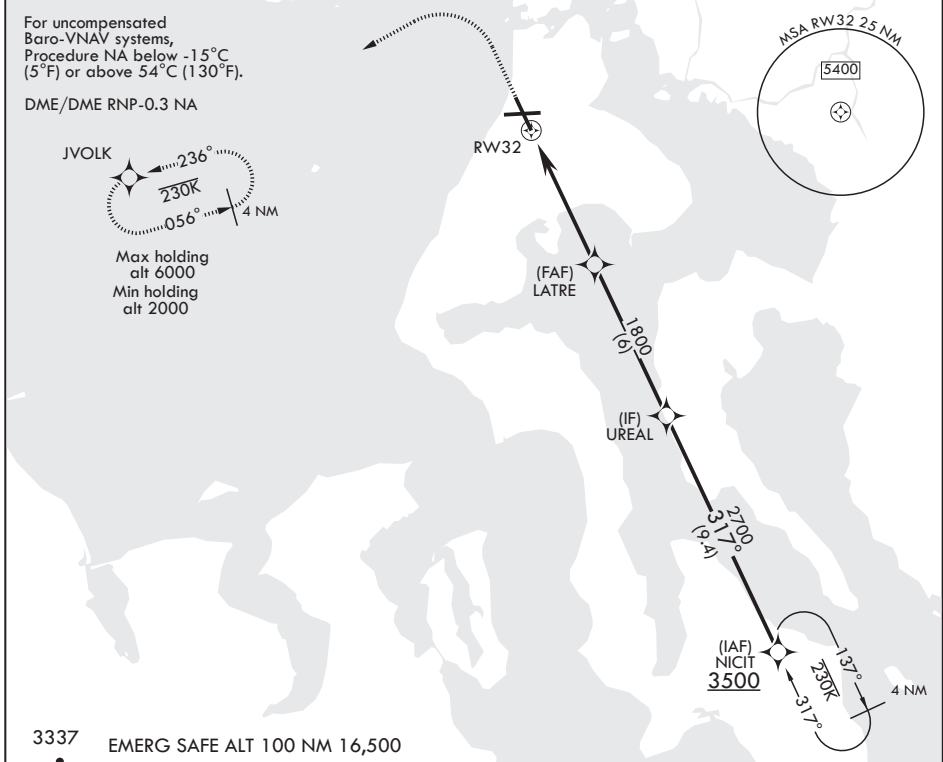
APCH CRS	Rwy Idg	8000
317°	TDZE	47
	Arpt Elev	47

AL-451 (USN) WHIDBEY ISLAND NAS (AULT FLD) (KNUW)

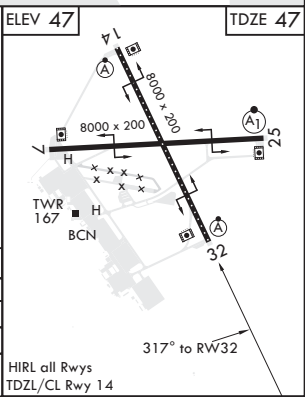
V * When ALS inop, increase CAT ABCD vis to 1 1/2 miles.
 ** When ALS inop, increase CAT AB vis to 1 mile, CAT CD vis to 1 1/2 miles.

ALSF-2 MISSED APPROACH: Climb to 1200 then climbing left turn to 2000 direct JVOLK and hold.

ATIS	APP CON/DEP CON	TOWER	GND CON	CLNC DEL	ASR/PAR
134.15 281.5	118.2 285.65 W 120.7 270.8 E	127.9 340.2	121.75 336.4	135.1 379.9	



1200	2000	JVOLK	† LNAV only	
UREAL 317° 3500		NICIT		
LATRE 2700		GP 3.02° TCH 50		
RW32 † 1.5 NM to RW32		1800		
5.3 NM				
CATEGORY	A	B	C	D
LNAV/VNAV DA*	492-1		445	(500-1)
LNAV MDA**	580-1/2	533 (600-1/2)	580-1	533 (600-1)
◻ CIRCLING	700-1 653 (700-1)	800-1 753 (800-1)	900-2 1/2 853 (900-2 1/2)	900-2 3/4 853 (900-2 3/4)



OAK HARBOR, WASHINGTON

48°21'N - 122°39'W

WHIDBEY ISLAND NAS (AULT FLD) (KNUW)

Orig 02MAR17
 TERPS

RNAV (GPS) RWY 32

NW-1, 12 SEP 2019 to 10 OCT 2019

NW-1, 12 SEP 2019 to 10 OCT 2019