

OAK HARBOR, WASHINGTON

RNAV (GPS) RWY 7

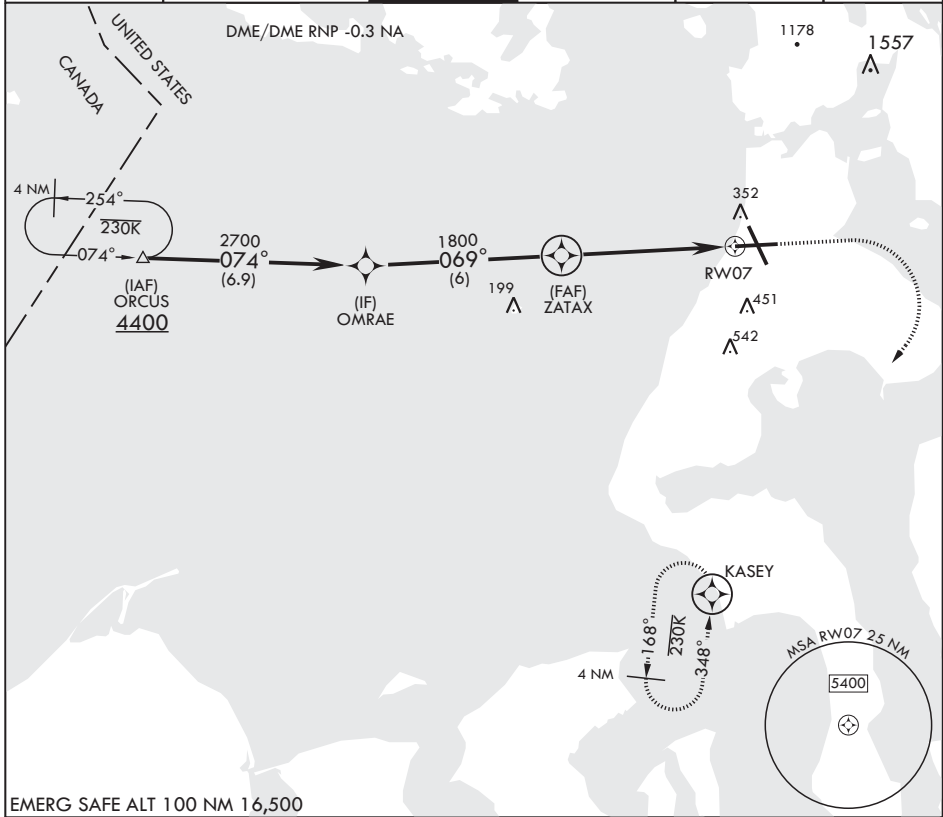
APCH CRS	Rwy Idg	8000
069°	TDZE	25
	Arprt Elev	47

AL-451 (USN)

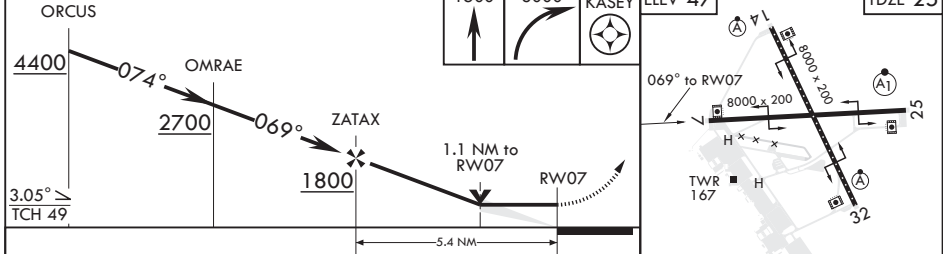
WHIDBEY ISLAND NAS (KNUW)

MISSED APPROACH: Climb to 1500, then climbing right turn to 3000 direct KASEY and hold.

ATIS 134.15 281.5	APP CON/DEP CON 118.2 285.65 W 120.7 270.8 E	TOWER 127.9 340.2	GND CON 121.75 336.4	CLNC DEL 135.1 379.9	ASR/PAR
----------------------	--	----------------------	-------------------------	-------------------------	---------



EMERG SAFE ALT 100 NM 16,500



CATEGORY	A	B	C	D
LNAV MDA	420-1	395 (400-1)	420-1 1/8	395 (400-1 1/8)
C CIRCLING	700-1 653 (700-1)	800-1 753 (800-1)	900-2 1/2 853 (900-2 1/2)	900-2 3/4 853 (900-2 3/4)

TDZ/CL Rwy 14
HIRL all Rwys

OAK HARBOR, WASHINGTON 48°21'N - 122°39'W WHIDBEY ISLAND NAS (KNUW)

RNAV (GPS) RWY 7

Orig 19JUL18
TERPS

NW-1, 12 SEP 2019 to 10 OCT 2019

NW-1, 12 SEP 2019 to 10 OCT 2019