

OAK HARBOR, WASHINGTON

TACAN RWY 14

TACAN NUW Chan 85	APCH CRS 141°	Rwy ldg TDZE 8000 39	Arprt Elev 47
----------------------	------------------	----------------------------	------------------

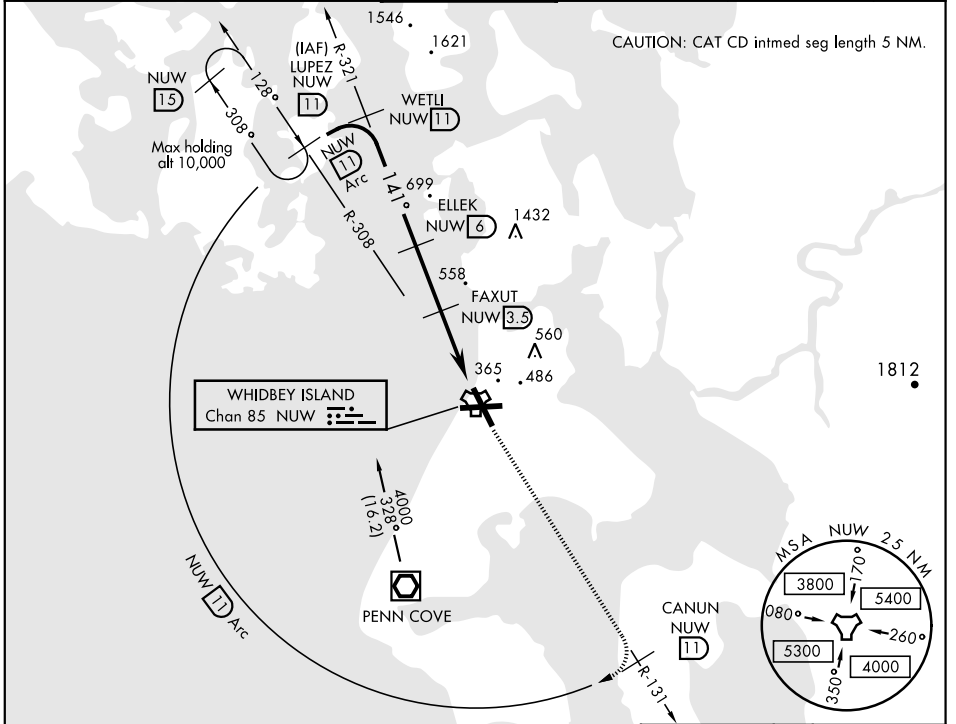
AL-451 [USN]

WHIDBEY ISLAND NAS (AULT FLD) (KNUW)

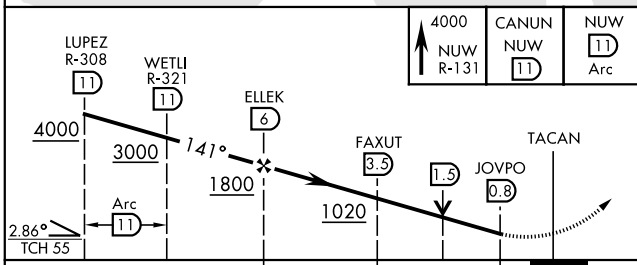
▼ *When ALS inop, increase CAT AB vis to 1 mile, CAT CD to 1 1/4 miles.

ALS-2 MISSED APPROACH: Climb to 4000 via NUW TACAN R-131 to CANUN, then arc SW of NUW via 11 DME Arc to LUPEZ and hold.

ATIS 134.15 281.5	WHIDBEY APP CON 120.7 270.8 118.2 285.65	EAST WEST	WHIDBEY TOWER 127.9 340.2	GND CON 121.75 336.4	CLNC DEL 135.1 379.9	ASR/PAR
----------------------	--	-----------	------------------------------	-------------------------	-------------------------	---------

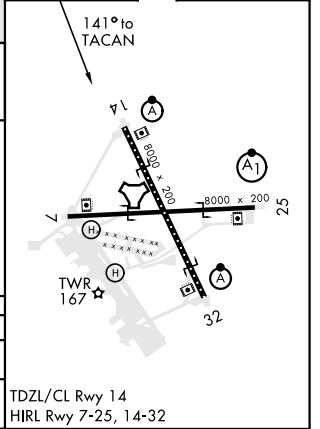


EMERG SAFE ALT 100 NM 16,500



CATEGORY	A	B	C	D
S-14 *	460-1/2	421 (500-1/2)	460-3/4	421 (500-3/4)
CIRCLING	760-1 713 (800-1)	800-1 753 (800-1)	900-2 1/2 853 (800-2 1/2)	900-2 3/4 853 (800-2 3/4)

ELEV 47	TDZE 39
---------	---------



OAK HARBOR, WASHINGTON
Amdt 1 02MAR17

48°21'N-122°39'W

WHIDBEY ISLAND NAS (AULT FLD) (KNUW)

TACAN RWY 14

NW-1, 12 SEP 2019 to 10 OCT 2019

NW-1, 12 SEP 2019 to 10 OCT 2019