

OAK HARBOR, WASHINGTON

# TACAN RWY 25

TACAN NUV Chan <b>85</b>	APCH CRS <b>254°</b>	Rwy Idg TDZE <b>28</b> Arprt Elev <b>47</b>
-----------------------------	-------------------------	---

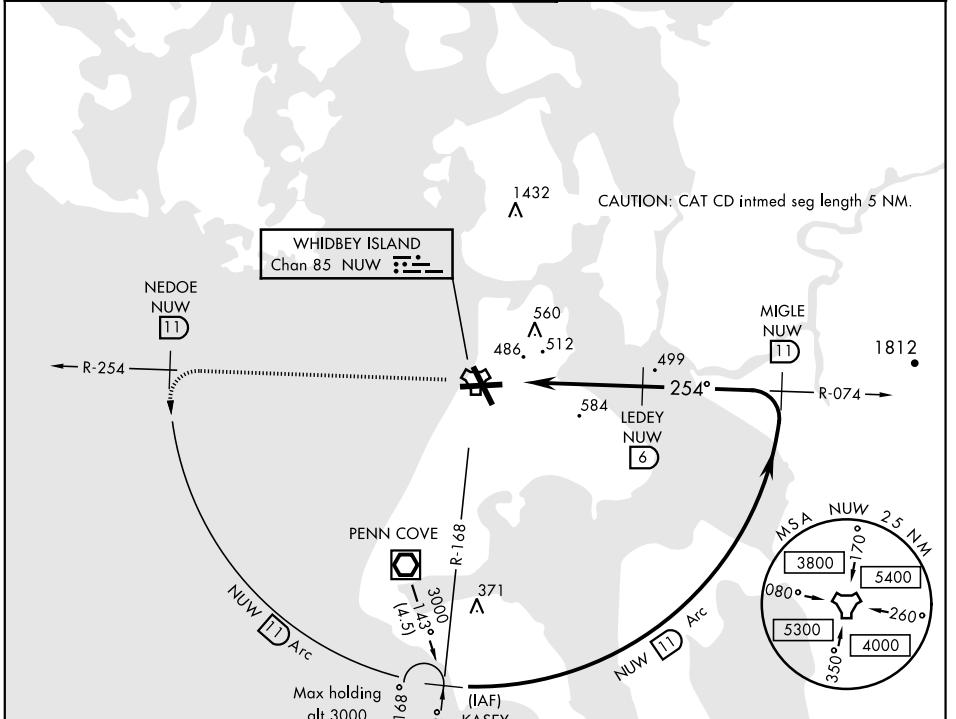
AL-451 [USN]

WHIDBEY ISLAND NAS (AULT FLD) (KNUW)

▼ \* When ALS inop, increase CAT AB vis to 1 mile, CAT CD to 2 miles.

MISSED APPROACH: Climb to 3000 via NUV TACAN R-254 to NEDOE, then arc SW of NUV via 11 DME Arc to KASEY and hold.

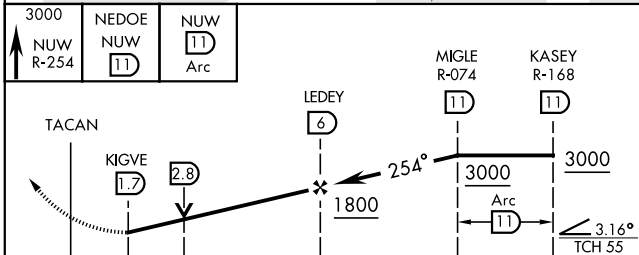
ATIS <b>134.15 281.5</b>	WHIDBEY APP CON <b>120.7 270.8</b> EAST <b>118.2 285.65</b> WEST	WHIDBEY TOWER <b>127.9 340.2</b>	GND CON <b>121.75 336.4</b>	CLNC DEL <b>135.1 379.9</b>	ASR/PAR
-----------------------------	--	-------------------------------------	--------------------------------	--------------------------------	---------



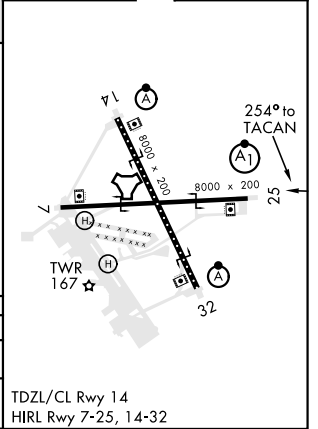
NW-1, 12 SEP 2019 to 10 OCT 2019

NW-1, 12 SEP 2019 to 10 OCT 2019

EMERG SAFE ALT 100 NM 16,500



ELEV 47	TDZE 28
---------	---------



CATEGORY	A	B	C	D
S-25 *	740-5/8 712 (700-5/8)		740-1 712 (700-1)	
CIRCLING	760-1 713 (800-1)	800-1 753 (800-1)	900-2 1/2 853 (900-2 1/2)	900-2 3/4 853 (900-2 3/4)

TDZL/CL Rwy 14  
HIRL Rwy 7-25, 14-32

OAK HARBOR, WASHINGTON

48° 21' N - 122° 39' W

WHIDBEY ISLAND NAS (AULT FLD) (KNUW)

Amtd 1 02MAR17

# TACAN RWY 25