

OAK HARBOR, WASHINGTON

# TACAN RWY 7

TACAN NUW Chan <b>85</b>	APCH CRS <b>058°</b>	Rwy ldg TDZE <b>25</b> Arprt Elev <b>47</b>
-----------------------------	-------------------------	---

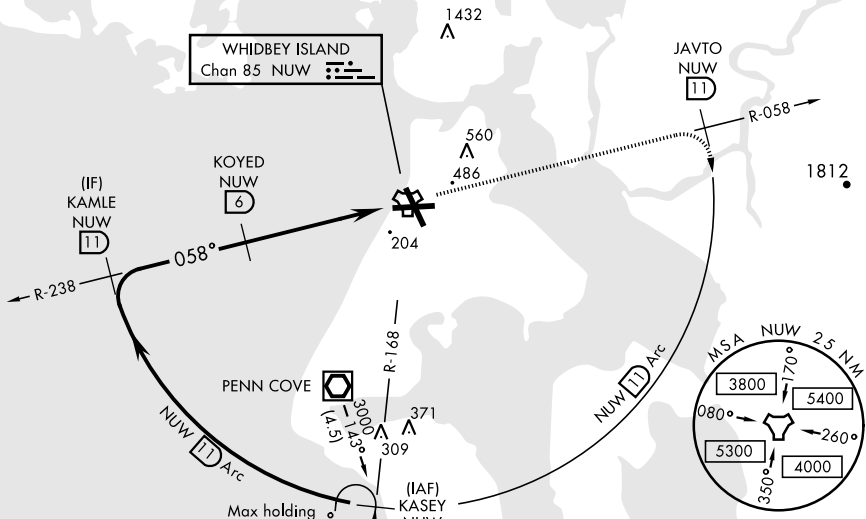
AL-451 [USN]

WHIDBEY ISLAND NAS (AULT FLD) (KNUW)

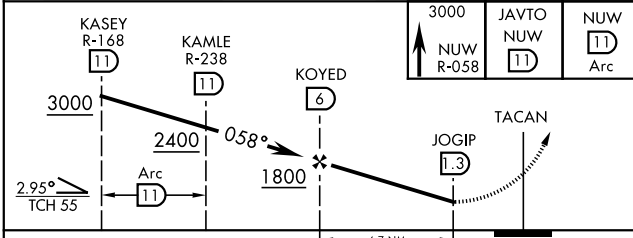
**▽** MISSED APPROACH: Climb to 3000 via NUW TACAN R-058 to JAVTO, then arc SE of NUW via 11 DME Arc to KASEY and hold.

ATIS <b>134.15 281.5</b>	WHIDBEY APP CON <b>120.7 270.8</b> EAST <b>118.2 285.65</b> WEST	WHIDBEY TOWER <b>127.9 340.2</b>	GND CON <b>121.75 336.4</b>	CLNC DEL <b>135.1 379.9</b>	ASR/PAR
-----------------------------	--	-------------------------------------	--------------------------------	--------------------------------	---------

CAUTION: CAT CD intmed seg length 5 NM

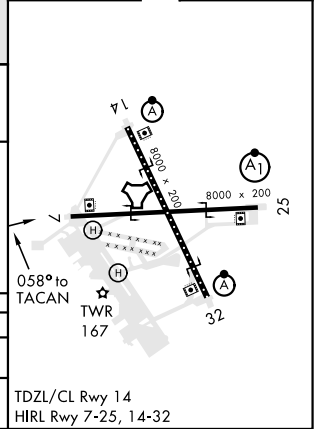


EMERG SAFE ALT 100 NM 16,500



	3000	JAVTO NUW (11) R-058	NUW (11) Arc	
CATEGORY	A	B	C	D
S-7	420-1	395 (400-1)	420-1½	395 (400-1½)
<b>C</b> CIRCLING	760-1 713 (800-1)	800-1 753 (800-1)	900-2½ 853 (900-2½)	900-2¾ 853 (900-2¾)

ELEV 47	TDZE 25
---------	---------



OAK HARBOR, WASHINGTON  
Amdt 1 02MAR17

48°21'N-122°39'W

WHIDBEY ISLAND NAS (AULT FLD) (KNUW)

# TACAN RWY 7

NW-1, 12 SEP 2019 to 10 OCT 2019

NW-1, 12 SEP 2019 to 10 OCT 2019