

WAAS CH 86624 W07A	APP CRS 066°	Rwy Idg TDZE 543 Apt Elev 543
--	------------------------	---

RNAV (GPS) RWY 7

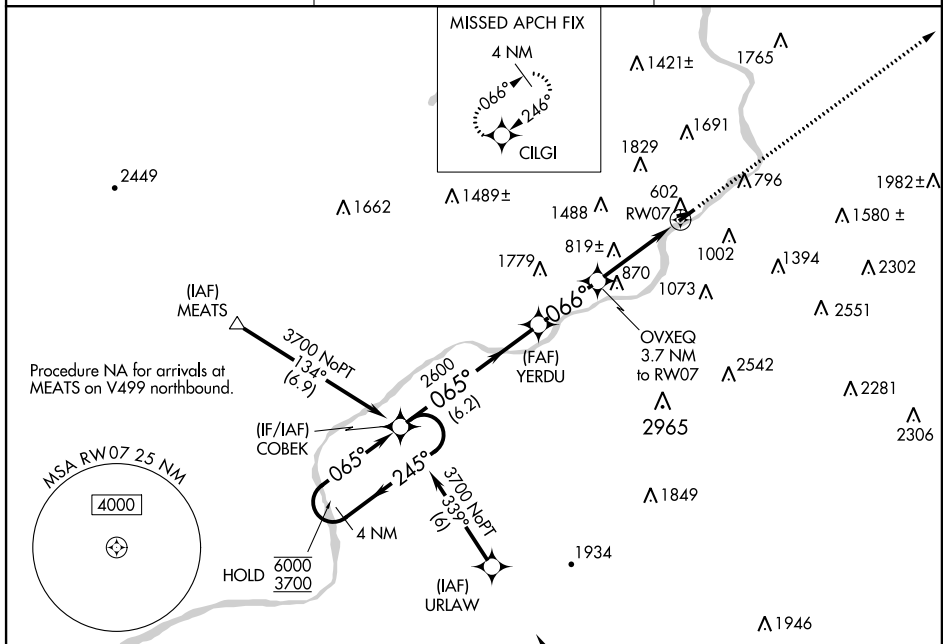
WILKES-BARRE WYOMING VALLEY (WBW)

RNP APCH.

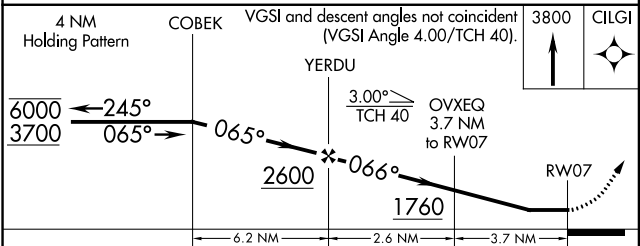
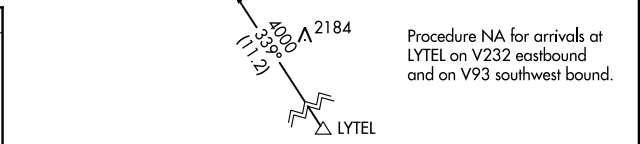
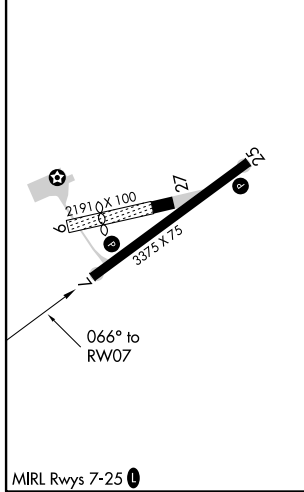
NA Rwy 7 helicopter visibility reduction below 1 SM NA. Use Wilkes-Barre/Scranton altimeter setting. Circling NA NW of Rwy 7-25. Straight-in and Circling Rwy 7 NA at night.

MISSED APPROACH:
Climb to 3800 direct
CLGI and hold.

WILKES-BARRE/SCRANTON INTL ATIS 111.6	WILKES-BARRE APP CON 126.3 256.7	UNICOM 122.8 (CTAF) 0
---	--	---------------------------------



ELEV 543	TDZE 543
----------	----------



CATEGORY	A	B	C	D
LP MDA	1160-1	617 (700-1)		NA
LNAV MDA	1300-1 757 (800-1)	1300-1¼ 757 (800-1¼)		NA
CIRCLING	1300-1 757 (800-1)	1300-1¼ 757 (800-1¼)		NA

NE-4, 12 SEP 2019 to 10 OCT 2019

NE-4, 12 SEP 2019 to 10 OCT 2019