

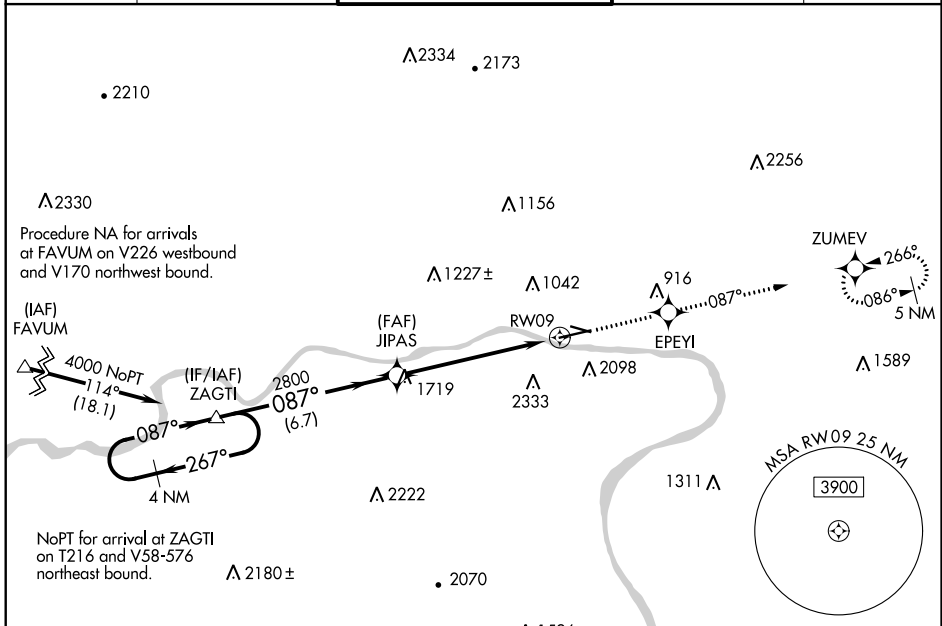
WAAS CH 86924 W09A	APP CRS 087°	Rwy ldg 6073 TDZE 521 Apt Elev 528
--	------------------------	---

RNAV (GPS) RWY 9

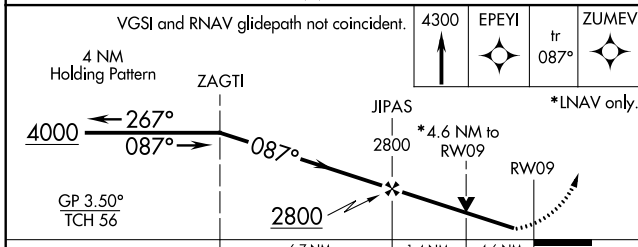
WILLIAMSPORT RGNL (IPT)

 -10°C	DME/DME RNP-0.3 NA. Circling Rwy 12, 30 NA at night. Circling NA south of Rwy 9 and southwest of Rwy 30. Rwy 9 helicopter visibility reduction below ¾ SM NA.	MISSED APPROACH: Climb to 4300 direct EPEYI and on track 087° to ZUMEV and hold, continue climb-in-hold to 4300.
---------------	--	--

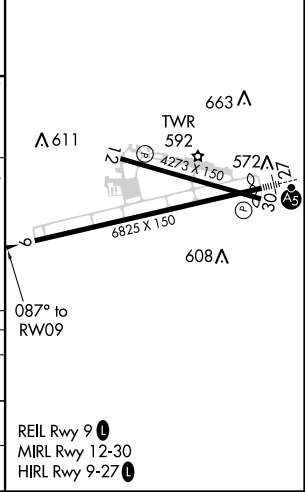
ASOS 125.225	NEW YORK CENTER 124.9	WILLIAMSPORT TOWER ★ 119.1 (CTAF) 257.8	GND CON 121.9	UNICOM 122.95
------------------------	---------------------------------	--	-------------------------	-------------------------



VGSi and RNAV glidepath not coincident.		4300 	EPEYI 	fr 087°	ZUMEV
---	--	----------	-----------	------------	-----------



ELEV 528		TDZE 521
----------	--	----------



CATEGORY	A	B	C	D
LPV DA	1036-1½ 515 (600-1½)			NA
LNNAV MDA	2040-1¼ 1519 (1600-1¼)	2040-1½ 1519 (1600-1½)	2040-3 1519 (1600-3)	NA
CIRCLING	2040-1¼ 1512 (1600-1¼)	2040-1½ 1512 (1600-1½)	2040-3 1512 (1600-3)	NA

REIL Rwy 9
 MIRL Rwy 12-30
 HIRL Rwy 9-27

NE-4, 12 SEP 2019 to 10 OCT 2019

NE-4, 12 SEP 2019 to 10 OCT 2019