


| | | |
|--|------------------------|---|
| WAAS CH 65815 W01A | APP CRS 015° | Rwy Idg 7012 TDZE 76 Apt Elev 80 |
|--|------------------------|---|

RNAV (GPS) RWY 1 NEW CASTLE (ILG)

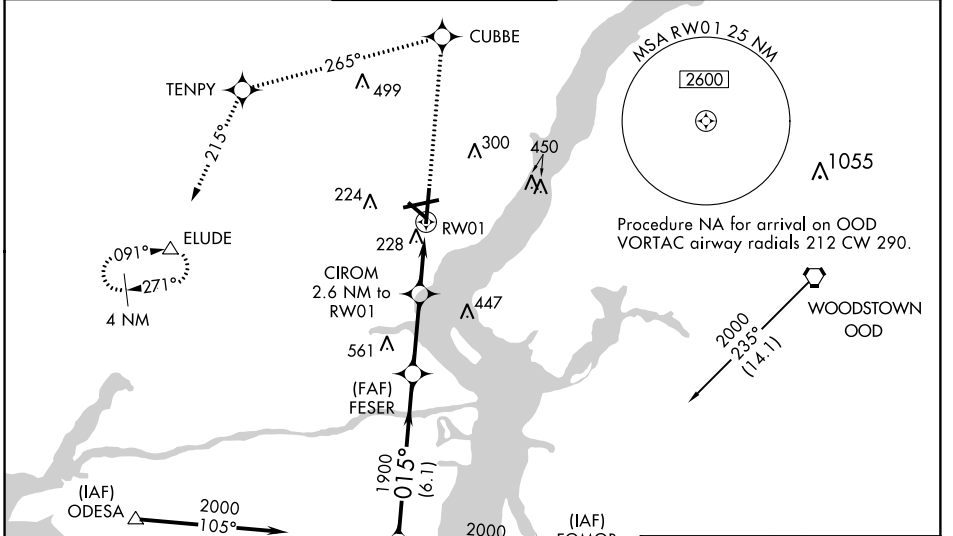
⚠ Inoperative table does not apply to LPV all Cats and LNAV Cats A and B. Baro-VNAV NA when using Philadelphia Intl altimeter setting. For uncompensated Baro-VNAV systems, LNAV/VNAV NA below -1.5°C (5°F) or above 49°C (120°F). DME/DME RNP-0.3 NA. Visibility reduction by helicopters NA. When local altimeter setting not received, use Philadelphia Intl altimeter setting: increase LPV DA to 380, LNAV/VNAV DA to 579, and all MDA 60 feet; increase LNAV/VNAV all Cats visibility to RVR 6000. For inoperative MALSR, increase LNAV Cats C and D visibility 1/4 mile. For inoperative MALSR, when using Philadelphia Intl altimeter setting, increase LNAV visibility Cat C 1/4 mile.

MALSR



MISSED APPROACH: Climb to 2000 direct CUBBE and left turn via track 265° to TENPY and via track 214° to ELUDE and hold.

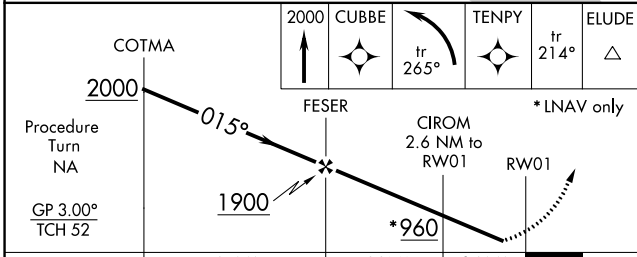
| | | | | | |
|-----------------------|---|--|-------------------------------|---------------------------|-------------------------|
| ATIS 123.95 | PHILADELPHIA APP CON 118.35 323.1 | WILMINGTON TOWER* 126.0 (CTAF) 352.05 | GND CON 121.7 275.8 | CLNC DEL 119.95 | UNICOM 122.95 |
|-----------------------|---|--|-------------------------------|---------------------------|-------------------------|



NE-3, 12 SEP 2019 to 10 OCT 2019

NE-3, 12 SEP 2019 to 10 OCT 2019

| | |
|------------------------|---------|
| ELEV 80 | TDZE 76 |
| REIL Rwy 9, 27 and 19 | |
| HIRL Rwy 9-27 and 1-19 | |
| MIRL Rwy 14-32 | |



| CATEGORY | A | B | C | D |
|--------------|-------|-------------|------------------------|----------------------|
| LPV DA | | 326/50 | 250 (300-1) | |
| LNAV/VNAV DA | | 525/50 | 449 (500-1) | |
| LNAV MDA | | 480/50 | 404 (400-1) | |
| CIRCLING | 540-1 | 460 (500-1) | 600-1½ 520 (600-1½) | 640-2 560 (600-2) |

