

WAAS CH 53515 W27A	APP CRS 268°	Rwy Idg 7000 TDZE 72 Apt Elev 80
--	------------------------	---

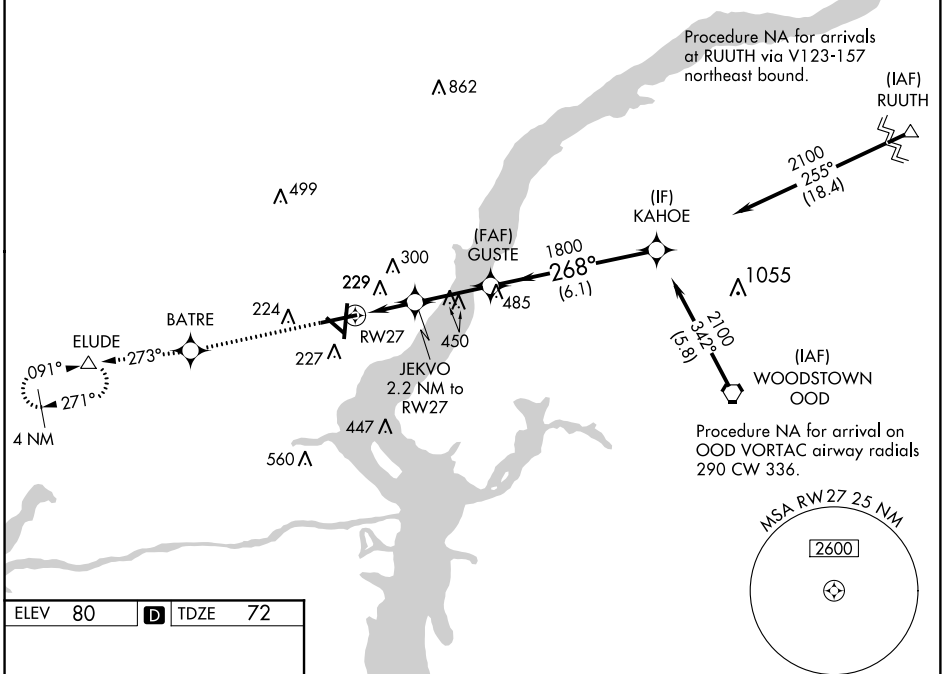
RNAV (GPS) RWY 27

NEW CASTLE (ILG)

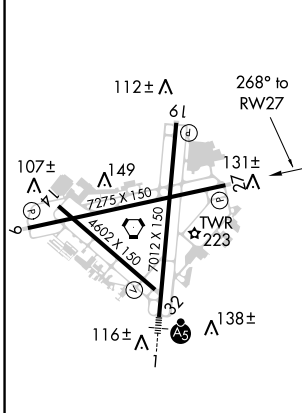
Baro-VNAV NA when using Philadelphia Intl altimeter setting. For uncompensated Baro-VNAV systems, LNAV/VNAV DA NA below -15°C (5°F) or above 39°C (102°F).
DME/DME RNP-0.3 NA. Helicopter visibility reduction below 3/4 SM NA. When local altimeter setting not received, use Philadelphia Intl altimeter setting: increase LPV DA to 480, LNAV/VNAV to 584, and all MDA 60 feet; increase LPV all Cats and LNAV Cats C and D visibility 1/8 mile and LNAV/VNAV all Cats visibility 1/4 mile.

MISSED APPROACH: Climb to 2000 direct BATRE and via track 273° to ELUDE and hold.

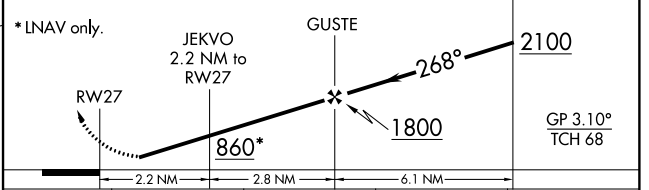
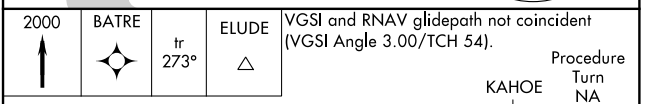
ATIS 123.95	PHILADELPHIA APP CON 118.35 323.1	WILMINGTON TOWER* 126.00 (CTAF) 352.05	GND CON 121.7 275.8	CLNC DEL 119.95	UNICOM 122.95
-----------------------	---	---	-------------------------------	---------------------------	-------------------------



ELEV 80	D	TDZE 72
---------	----------	---------



REIL Rwy 9, 27 and 19
 HIRL Rwy 9-27 and 1-19
 MIRL Rwy 14-32



CATEGORY	A	B	C	D
LPV DA	426-1 1/8	354	400-1 1/8	
LNAV/VNAV DA	530-1 3/8	458	500-1 3/8	
LNAV MDA	500-1	428 (500-1)	500-1 1/4	428 (500-1 1/4)
CIRCLING	540-1	460 (500-1)	600-1 1/2	640-2
			520 (600-1 1/2)	560 (600-2)

NE-3, 12 SEP 2019 to 10 OCT 2019

NE-3, 12 SEP 2019 to 10 OCT 2019