

VORTAC DQO <b>114.0</b> Chan <b>87</b>	APP CRS <b>261°</b>	Rwy ldg <b>7000</b> TDZE <b>72</b> Apt Elev <b>80</b>
--	------------------------	---

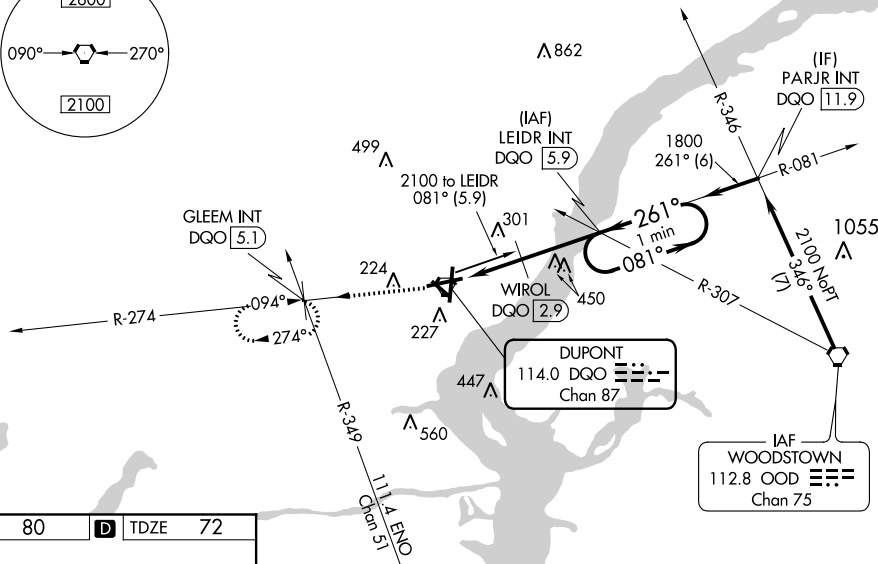
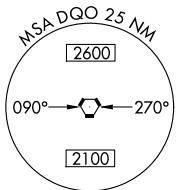
# VOR RWY 27

NEW CASTLE (ILG)

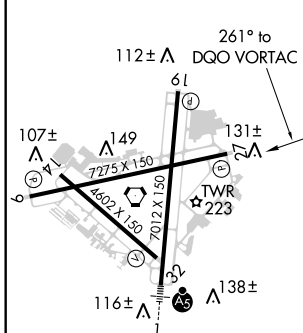
**⚠** Helicopter visibility reduction below 3/4 SM NA. When local altimeter setting not received, use Philadelphia Intl altimeter setting and increase all MDA 60 feet; increase S-27 Cat B visibility 1/4 mile and increase S-9 Cats C and D visibility 1/2 mile; increase Circling Cats B and D visibility 1/4 mile and increase Circling Cat C 1/2 mile; WIROL FIX minimums S-27 increase Cats C and D visibility 1/4 mile, and increase Circling Cat C 1/2 mile.

**MISSED APPROACH:** Climb to 2000 on DQO VORTAC R-274 to GLEEM INT/DQO 5.1 DME and hold.

ATIS <b>123.95</b>	PHILADELPHIA APP CON <b>118.35 323.1</b>	WILMINGTON TOWER ★ <b>126.0</b> (CTAF) <b>352.05</b>	GND CON <b>121.7 275.8</b>	CLNC DEL <b>119.95</b>	UNICOM <b>122.95</b>
-----------------------	---	---	-------------------------------	---------------------------	-------------------------



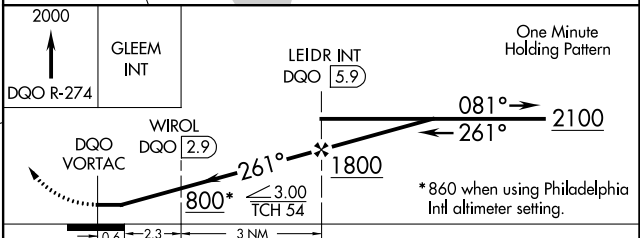
ELEV 80	<b>D</b>	TDZE 72
---------	----------	---------



REIL Rwy 9, 27 and 19 **Ⓛ**  
 HIRL Rwy 9-27 and 1-19 **Ⓛ**  
 MIRL Rwy 14-32 **Ⓛ**

FAF to MAP 5.9 NM

Knots	60	90	120	150	180
Min:Sec	5:54	3:56	2:57	2:22	1:58



CATEGORY	A	B	C	D
S-27	800-1 728 (800-1)		800-2 728 (800-2)	
CIRCLING	800-1 720 (800-1)		800-2 720 (800-2)	800-2 1/4 720 (800-2 1/4)
<b>WIROL FIX MINIMUMS (DME REQUIRED)</b>				
S-27	560-1 488 (500-1)		560-1 3/8 488 (500-1 3/8)	
CIRCLING	560-1 480 (500-1)		600-1 1/2 520 (600-1 1/2)	640-2 560 (600-2)

NE-3, 12 SEP 2019 to 10 OCT 2019

NE-3, 12 SEP 2019 to 10 OCT 2019