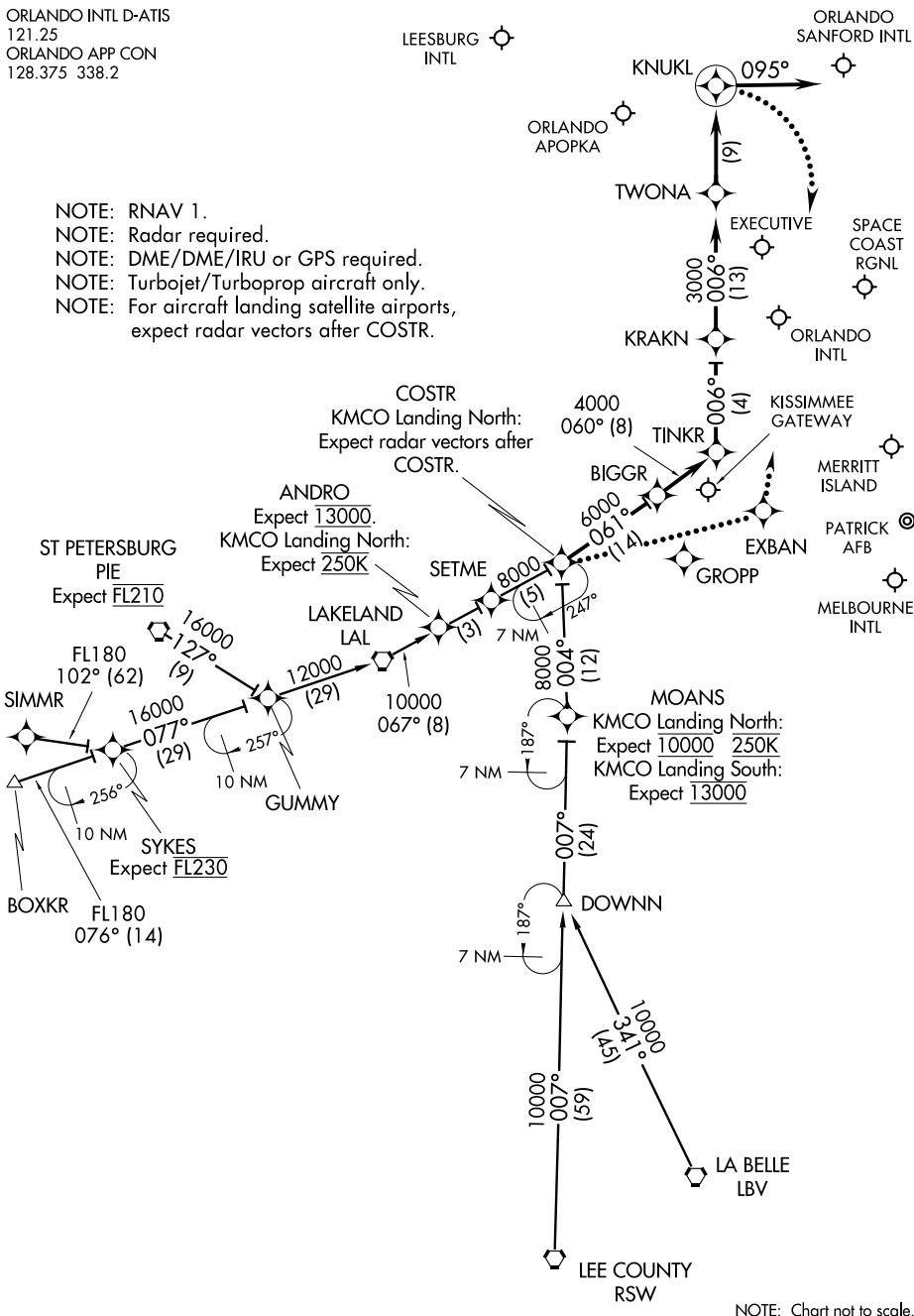


ORLANDO INTL D-ATIS
121.25
ORLANDO APP CON
128.375 338.2

LEESBURG INTL

ORLANDO SANFORD INTL

- NOTE: RNAV 1.
- NOTE: Radar required.
- NOTE: DME/DME/IRU or GPS required.
- NOTE: Turbojet/Turboprop aircraft only.
- NOTE: For aircraft landing satellite airports, expect radar vectors after COSTR.



SE-3, 12 SEP 2019 to 10 OCT 2019

SE-3, 12 SEP 2019 to 10 OCT 2019

NOTE: Chart not to scale.