


LOC I-PIE 109.1	APP CRS 176°	Rwy Idg TDZE Apt Elev	9180 7 11
---------------------------	------------------------	-----------------------------	--------------------------------------

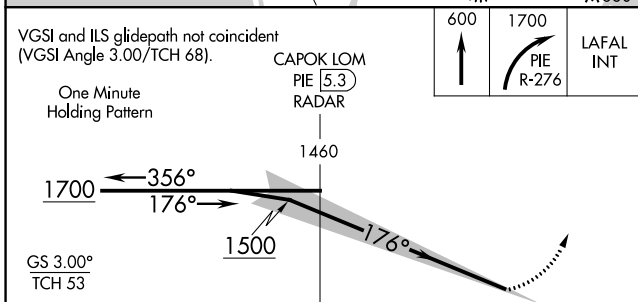
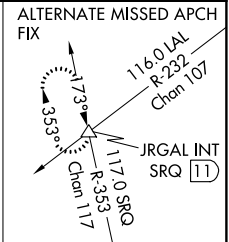
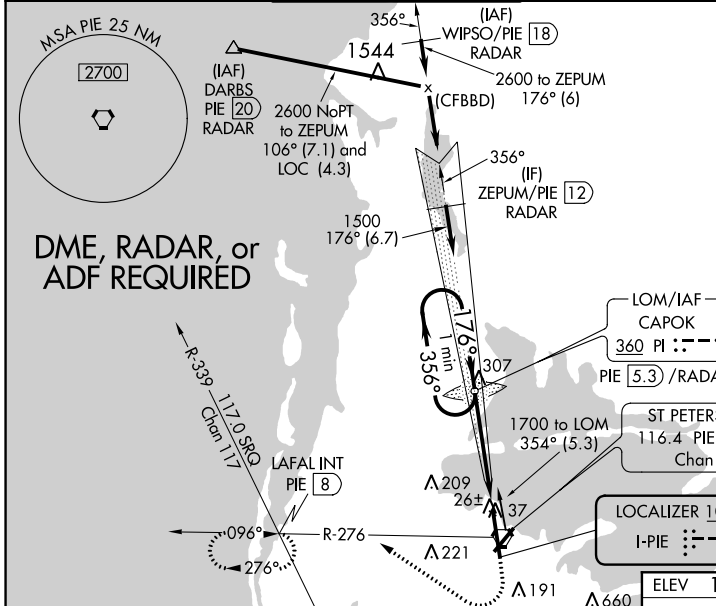
ILS RWY 18 (CAT II)

ST PETE-CLEARWATER INTL (PIE)

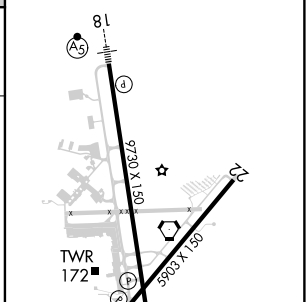
⚠ Category II S-ILS 18 NA when control tower closed.
⚠ Reduced lighting: Requires specific OPSPEC, MSPEC, or LOA approval of autoland or HUD to touchdown.
 DME, RADAR or ADF required.

MALSR

MISSED APPROACH: Climb to 600 then climbing right turn to 1700 on PIE VORTAC R-276 to LAFAL INT/PIE 8 DME and hold.

ATIS 134.5	TAMPA APP CON 125.3 316.05	ST. PETERSBURG TOWER* 118.3 (CTAF) 0 257.8	GND CON 121.9 348.6	CLNC DEL 120.6 350.2	UNICOM 122.95
----------------------	--------------------------------------	--	-------------------------------	--------------------------------	-------------------------



ELEV 11	D TDZE 7
---------	----------



CATEGORY	A	B	C	D
S-ILS 18		RA 107/12	100 DA 107	

CATEGORY II ILS - SPECIAL AIRCREW & AIRCRAFT CERTIFICATION REQUIRED

TDZ/CL Rwy 18
 REIL Rwys 4 and 22
 MIRL Rwy 4-22
 HIRL Rwy 18-36

SE-3, 12 SEP 2019 to 10 OCT 2019

SE-3, 12 SEP 2019 to 10 OCT 2019