

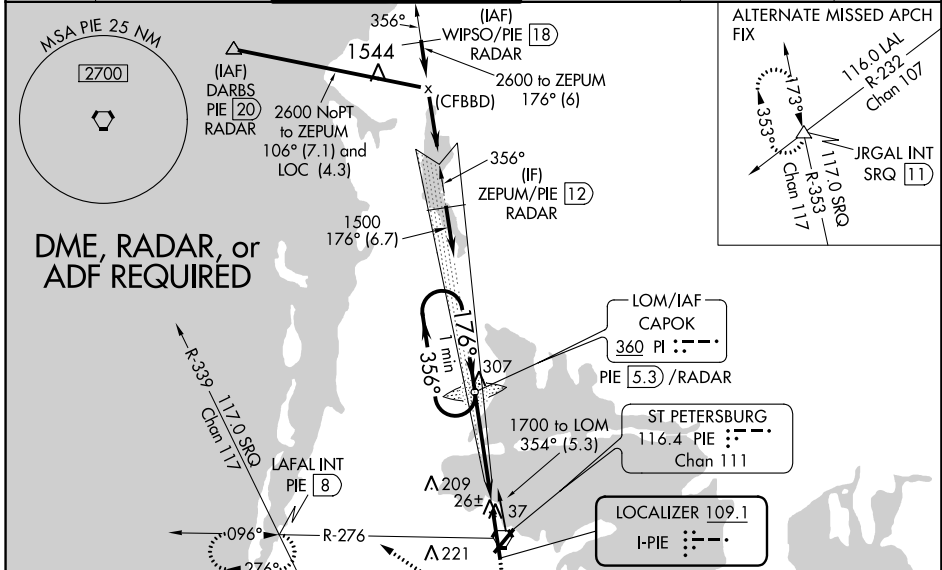
LOC I-PIE 109.1	APP CRS 176°	Rwy Idg TDZE Apt Elev	9180 7 11
---------------------------	------------------------	-----------------------------	--------------------------------------

ILS RWY 18 (SA CAT I)

ST PETE-CLEARWATER INTL (PIE)

<p>⚠ Requires specific OPSPEC, MSPEC, or LOA approval and use of HUD to DH.</p> <p>⚠ SA category I S-ILS 18 NA when control tower closed. DME, RADAR, or ADF required.</p>	<p>MALSR</p>	<p>MISSED APPROACH: Climb to 600 then climbing right turn to 1700 on PIE VORTAC R-276 to LAFAL INT/PIE 8 DME and hold.</p>
--	--------------	--

ATIS 134.5	TAMPA APP CON 125.3 316.05	ST. PETERSBURG TOWER* 118.3 (CTAF) 0 257.8	GND CON 121.9 348.6	CLNC DEL 120.6 350.2	UNICOM 122.95
----------------------	--------------------------------------	--	-------------------------------	--------------------------------	-------------------------



VGSI and ILS glidepath not coincident (VGSI Angle 3.00/TCH 68).

One Minute Holding Pattern

CAPOK LOM PIE 5.3 RADAR

1460

1700

356°

176°

1500

176°

GS 3.00° TCH 53

4.4 NM

1000'

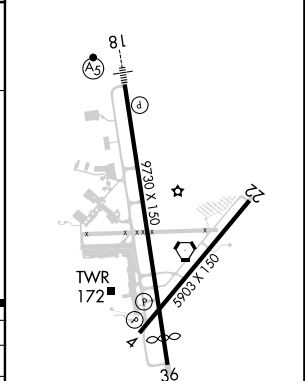
600

1700

PIE R-276

LAFAL INT

ELEV 11	D	TDZE 7
---------	---	--------



CATEGORY	A	B	C	D
S-ILS 18		RA 157/14	150 DA 157	

SA CATEGORY I ILS - SPECIAL AIRCREW & AIRCRAFT CERTIFICATION REQUIRED

TDZ/CL Rwy 18
REIL Rwy 4 and 22
MIRL Rwy 4-22
HIRL Rwy 18-36

SE-3, 12 SEP 2019 to 10 OCT 2019

SE-3, 12 SEP 2019 to 10 OCT 2019