


LOC I-PIE <b>109.1</b>	APP CRS <b>176°</b>	Rwy Idg TDZE Apt Elev	<b>9180</b> <b>7</b> <b>11</b>
---------------------------	------------------------	-----------------------------	--------------------------------------

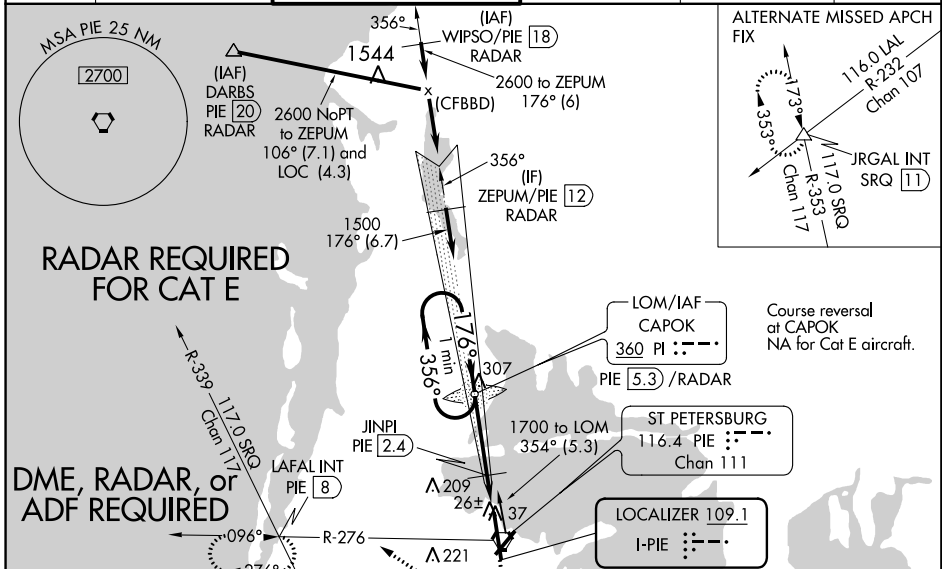
# ILS or LOC RWY 18

ST PETE-CLEARWATER INTL (PIE)

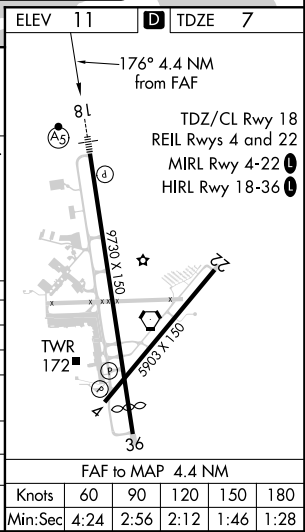
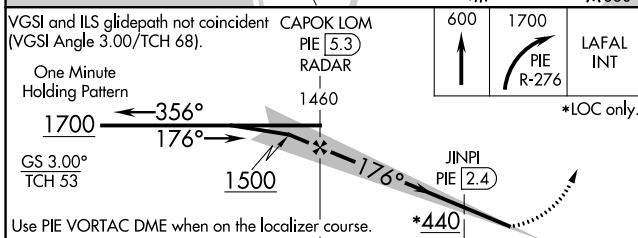
**⚠** S-ILS 18 NA when control tower closed.  
**⚠** For inop MALSR, increase S-ILS 18 Cat E visibility to RVR 4000 and S-LOC 18 Cat A/B to RVR 5500 and C/D/E visibility to 1/4 mile.  
**⚠** JINPI FIX MINIMUMS: For inop MALSR increase S-LOC 18 Cat C, D and E visibility to RVR 4500. DME, RADAR, or ADF required.  
 \*\*Use DME from PIE VORTAC.

**MALSR**  
  
**MISSED APPROACH:**  
 Climb to 600 then climbing right turn to 1700 on PIE VORTAC R-276 to LAFAL INT/PIE 8 DME and hold.

ATIS <b>134.5</b>	TAMPA APP CON <b>125.3 316.05</b>	ST. PETERSBURG TOWER* <b>118.3 (CTAF) 0 257.8</b>	GND CON <b>121.9 348.6</b>	CLNC DEL <b>120.6 350.2</b>	UNICOM <b>122.95</b>
----------------------	--------------------------------------	--	-------------------------------	--------------------------------	-------------------------



ELEV 11	TDZE 7
---------	--------



CATEGORY	A		B		C		D		E	
	1	2	1	2	1	2	1	2	1	2
S-ILS 18	207/18 200 (200-1/2)									
S-LOC 18	440/24		433 (500-1/2)		440/40		433 (500-3/4)			
<b>C</b> CIRCLING	520-1		509 (600-1)		640-1 3/4		680-2		960-3	
					629 (700-1 3/4)		669 (700-2)		949 (1000-3)	
**JINPI FIX MINIMUMS										
S-LOC 18	280/24		273 (300-1/2)							
<b>C</b> CIRCLING	520-1		509 (600-1)		640-1 3/4		680-2		960-3	
					629 (700-1 3/4)		669 (700-2)		949 (1000-3)	

SE-3, 12 SEP 2019 to 10 OCT 2019

SE-3, 12 SEP 2019 to 10 OCT 2019