

LOC/DME I-CWT <b>108.7</b> Chan <b>24</b>	APP CRS <b>356°</b>	Rwy Idg TDZE Apt Elev	<b>8720</b> <b>10</b> <b>11</b>
---	------------------------	-----------------------------	---------------------------------------

AL-625 (FAA)

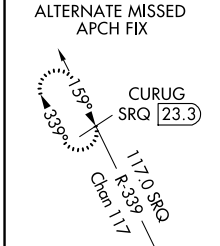
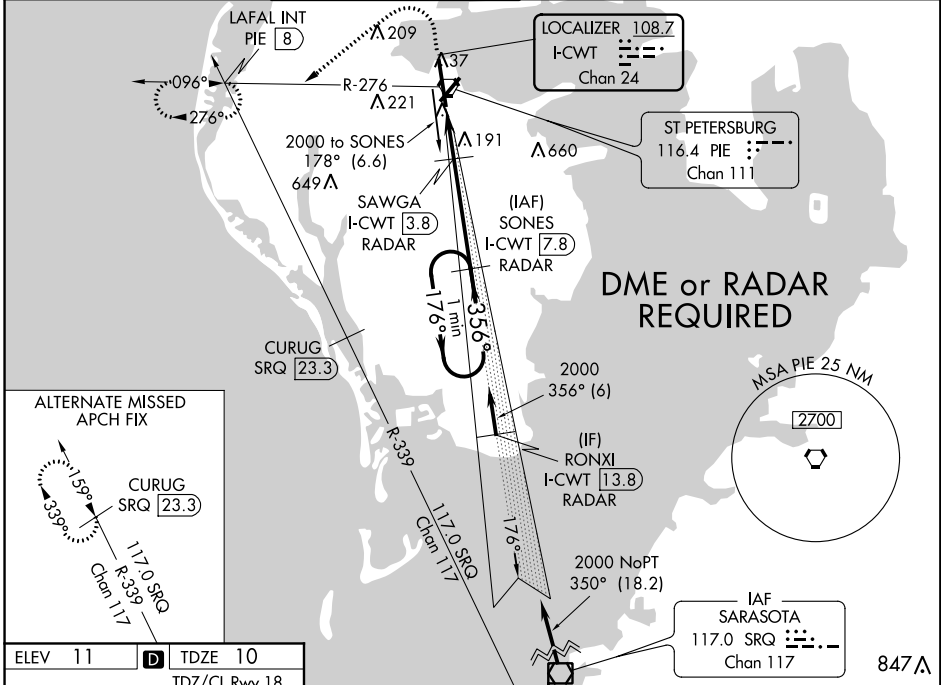
# ILS or LOC RWY 36

ST PETE-CLEARWATER INTL (PIE)

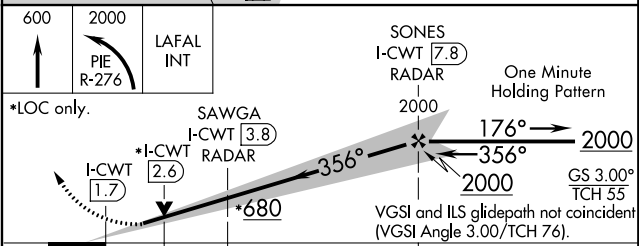
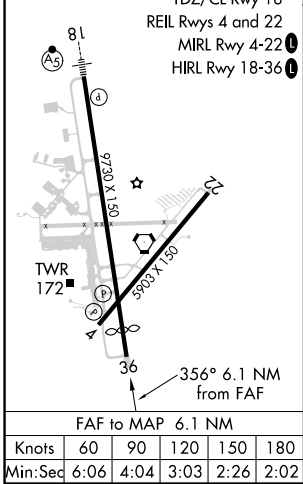
**▽** **▲** DME or RADAR required. Procedure NA when control tower closed.

MISSED APPROACH: Climb to 600 then climbing left turn to 2000 on PIE VORTAC R-276 to LAFAL INT/PIE 8 DME and hold.

ATIS <b>134.5</b>	TAMPA APP CON <b>125.3 316.05</b>	ST. PETERSBURG TOWER ★ <b>118.3 (CTAF) 0 257.8</b>	GND CON <b>121.9 348.6</b>	CLNC DEL <b>120.6 350.2</b>	UNICOM <b>122.95</b>
----------------------	--------------------------------------	---	-------------------------------	--------------------------------	-------------------------



ELEV 11	<b>D</b>	TDZE 10
---------	----------	---------



CATEGORY	A	B	C	D	E
S-ILS 36	210/40 200 (200-¾)				
S-LOC 36	680/55	670 (700-1)	680-17/8 670 (700-1¾)		
<b>C</b> CIRCLING	680-1	669 (700-1)	680-1½ 669 (700-1½)	680-2 669 (700-2)	960-3 949 (1000-3)
SAWGA FIX MINIMUMS					
S-LOC 36	360/55 350 (400-1)				
<b>C</b> CIRCLING	520-1	509 (600-1)	640-1½ 629 (700-1½)	680-2 669 (700-2)	960-3 949 (1000-3)

SE-3, 12 SEP 2019 to 10 OCT 2019

SE-3, 12 SEP 2019 to 10 OCT 2019