


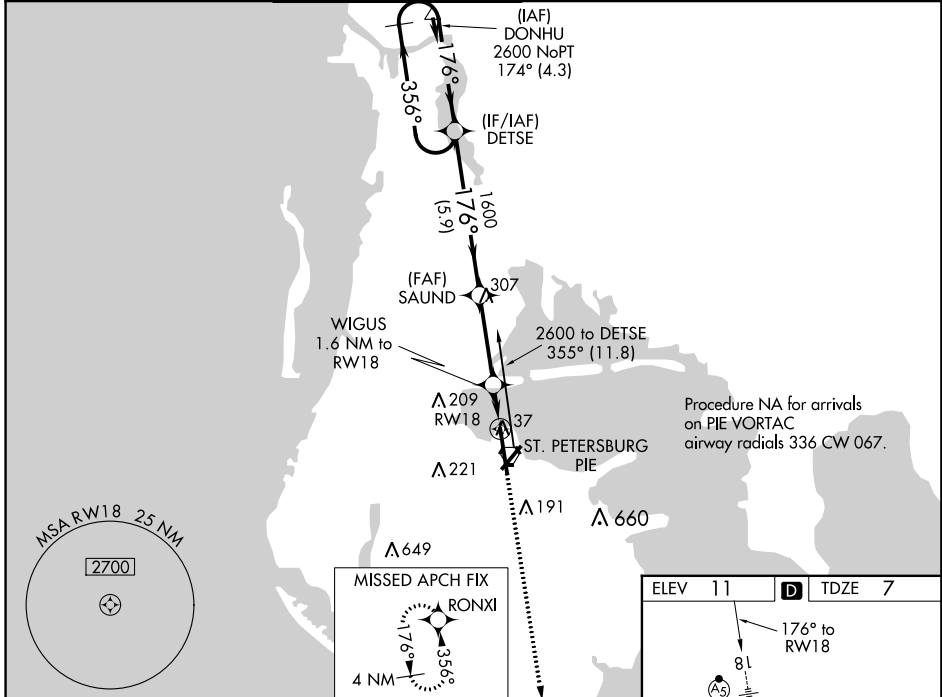
WAAS CH 61039 W18A	APP CRS 176°	Rwy Idg TDZE Apt Elev	9180 7 11
--	------------------------	-----------------------------	--------------------------------------

RNAV (GPS) RWY 18

ST PETE-CLEARWATER INTL (PIE)

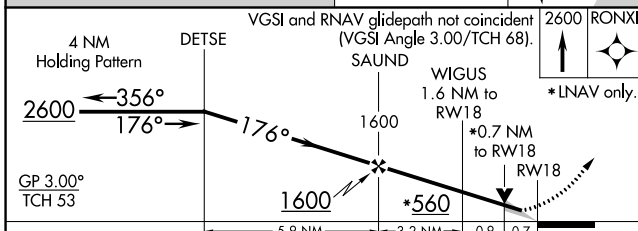
<p>▼</p> <p>For uncompensated Baro-VNAV systems, LNAV/VNAV NA below 3°C (38°F) or above 54°C (130°F). DME/DME RNP-0.3 NA. For inop MALSR, increase LNAV/VNAV all Cats visibility to RVR 4000 and LNAV visibility Cats C/D to RVR 4500.</p>	<p>MALSR</p>  <p>MISSED APPROACH: Climb to 2600 direct RONXI and hold.</p>
---	---

ATIS 134.5	TAMPA APP CON 125.3 316.05	ST. PETERSBURG TOWER★ 118.3 (CTAF) 0 257.8	GND CON 121.9 348.6	CLNC DEL 120.6 350.2	UNICOM 122.95
----------------------	--------------------------------------	--	-------------------------------	--------------------------------	-------------------------



SE-3, 12 SEP 2019 to 10 OCT 2019

SE-3, 12 SEP 2019 to 10 OCT 2019



ELEV 11	D TDZE 7
---------	----------

TDZ/CL Rwy 18
REIL Rws 4 and 22
MIRL Rwy 4-22
HIRL Rwy 18-36

CATEGORY	A	B	C	D
LPV DA		207/18	200 (200-½)	
LNAV/VNAV DA		257/24	250 (300-½)	
LNAV MDA		300/24	293 (300-½)	
CIRCLING	520-1	509 (600-1)	640-1¼ 629 (700-1¼)	680-2 669 (700-2)