

WAAS CH 65739 W36A	APP CRS 356°	Rwy Idg TDZE 10 Apt Elev 11	8720
--	------------------------	---	-------------

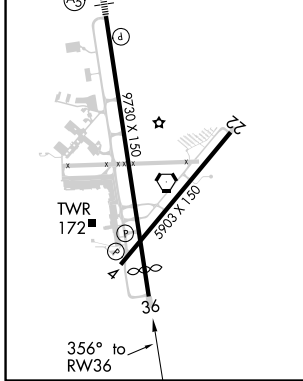
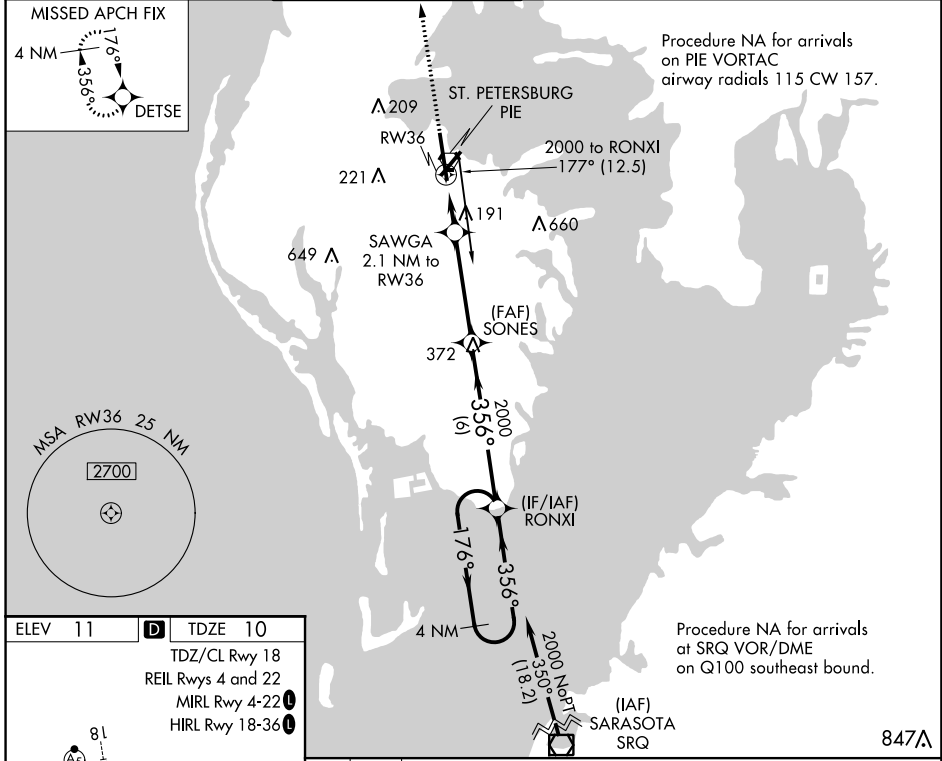
RNAV (GPS) RWY 36

ST PETE-CLEARWATER INTL (PIE)

V **A** DME/DME RNP-0.3 NA. For uncompensated Baro-VNAV systems, LNAV/VNAV NA below 3°C (38°F) or above 54°C (130°F).

MISSED APPROACH: Climb to 2600 direct DETSE and hold.

ATIS 134.5	TAMPA APP CON 125.3 316.05	ST. PETERSBURG TOWER ★ 118.3 (CTAF) 0 257.8	GND CON 121.9 348.6	CLNC DEL 120.6 350.2	UNICOM 122.95
----------------------	--------------------------------------	---	-------------------------------	--------------------------------	-------------------------



2600 DETSE VGSi and RNAV glidepath not coincident (VGSi Angle 3.00/TCH 76).

↑ VGSi

*LNAV only.

SAWGA 2.1 NM to RW36

SONES 2000

RONXI 4 NM Holding Pattern

176° → 2000

← 356° ← 2000

GP 3.00° TCH 55

CATEGORY	A	B	C	D
LPV DA	210/40		200 (200-¾)	
LNAV/VNAV DA	318/50		308 (400-1)	
LNAV MDA	460/55	450 (500-1)	460-1¾	450 (500-1¾)
C CIRCLING	520-1	509 (600-1)	640-1¾ 629 (700-1¾)	680-2 669 (700-2)

SE-3, 12 SEP 2019 to 10 OCT 2019

SE-3, 12 SEP 2019 to 10 OCT 2019