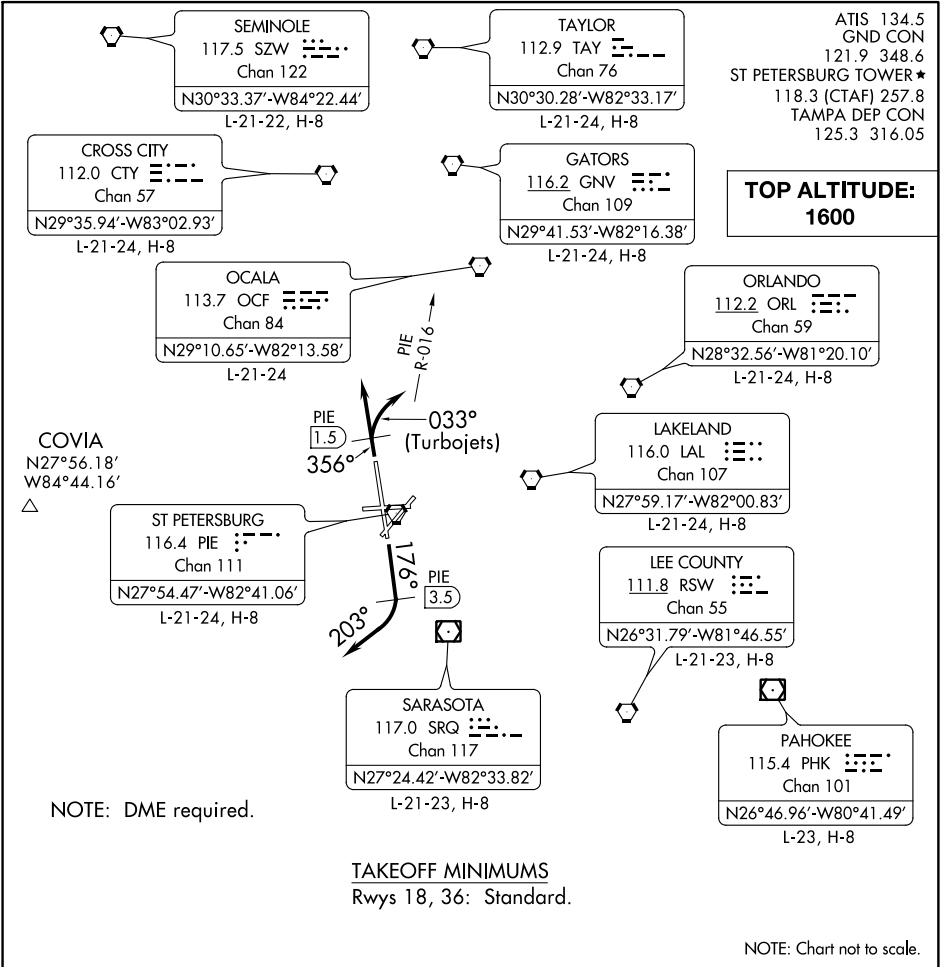


(PIE9.PIE) 19171

AL-625 (FAA)

ST. PETE-CLEARWATER INTL (PIE)
ST PETERSBURG-CLEARWATER, FLORIDA

ST PETE NINE DEPARTURE



SE-3, 12 SEP 2019 to 10 OCT 2019

SE-3, 12 SEP 2019 to 10 OCT 2019

DEPARTURE ROUTE DESCRIPTION

TAKEOFF RWY 18: Climb heading 176° until PIE VORTAC 3.5 DME, then turn right heading 203° or as assigned for RADAR vectors to filed/assigned route, thence. . . .

TAKEOFF RWY 36: TURBOJETS climb heading 356° until PIE VORTAC 1.5 DME, then turn right heading 033° to intercept and fly outbound on PIE R-016, thence. . . .

ALL OTHERS fly heading 356° or as assigned for RADAR vectors to filed/assigned route. Thence. . . .

. . . .maintain 1600, expect further clearance to filed altitude 10 minutes after departure.

ST PETE NINE DEPARTURE

(PIE9.PIE) 29MAR18

ST PETERSBURG-CLEARWATER, FLORIDA
ST. PETE-CLEARWATER INTL (PIE)