

# TRAPR THREE ARRIVAL(RNAV)

SARASOTA/BRADENTON, FLORIDA

## ARRIVAL ROUTE DESCRIPTION

### JORPO TRANSITION (JORPO.TRAPR3)

From TRAPR on track 177° to ZEBON, then on track 177° to RUNNE, then on track 177° to LAL VORTAC. Thence . . .

. . . . Landing KSRQ Rwy 14: From LAL VORTAC on track 226° to WUDDY, then on track 226° to LYFIE, then on track 273° to RUTAE, then on heading 230° or as assigned by ATC. Expect RADAR vectors to final approach course.

. . . . Landing KSRQ Rwy 32: From LAL VORTAC on track 226° to WUDDY, then on track 226° to LYFIE, then on track 175° to MURDO, then on heading 230° or as assigned by ATC. Expect RADAR vectors to final approach course.

. . . . Landing KVNC: From LAL VORTAC on track 226° to WUDDY, then on track 226° to LYFIE, then on heading 226° or as assigned by ATC. Expect RADAR vectors to final approach course.

### LOST COMMUNICATIONS:

KSRQ Landing Rwy 14: Continue track to RUTAE, then turn left to intercept the Rwy 14 final approach course, conduct approach.

KSRQ Landing Rwy 32: Continue track to MURDO, then turn right to intercept the Rwy 32 final approach course, conduct approach.

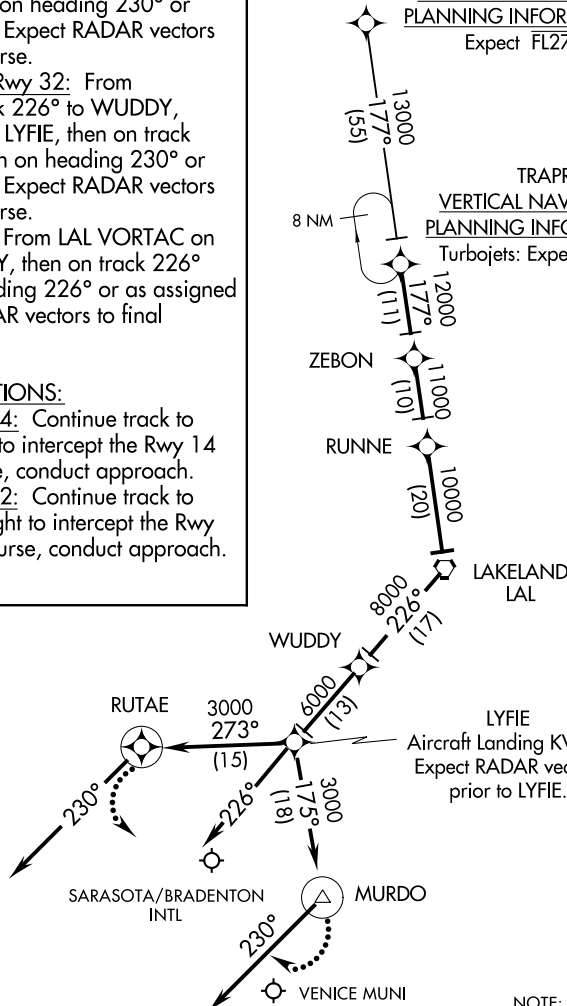
KVNC: Standard.

TAMPA APP CON  
119.65 353.575  
SARASOTA/BRADENTON INTL ATIS  
124.375  
VENICE AWOS-3  
119.275

NOTE:RADAR Required.  
NOTE:RNAV 1.  
NOTE:DME/DME/IRU or GPS Required.  
NOTE:Turbopjet and Turboprop aircraft only.

JORPO  
VERTICAL NAVIGATION  
PLANNING INFORMATION  
Expect FL270

TRAPR  
VERTICAL NAVIGATION  
PLANNING INFORMATION  
Turbopjets: Expect 13000



NOTE: Chart not to scale.

SE-3, 12 SEP 2019 to 10 OCT 2019

SE-3, 12 SEP 2019 to 10 OCT 2019