


LOC/DME I-EWB <b>109.7</b> Chan <b>34</b>	APP CRS <b>234°</b>	Rwy Idg TDZE <b>78</b> Apt Elev <b>79</b>	<b>5000</b>
---	------------------------	---	-------------

# LOC BC RWY 23

NEW BEDFORD RGNL (EWB)

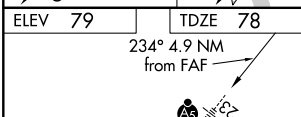
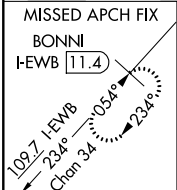
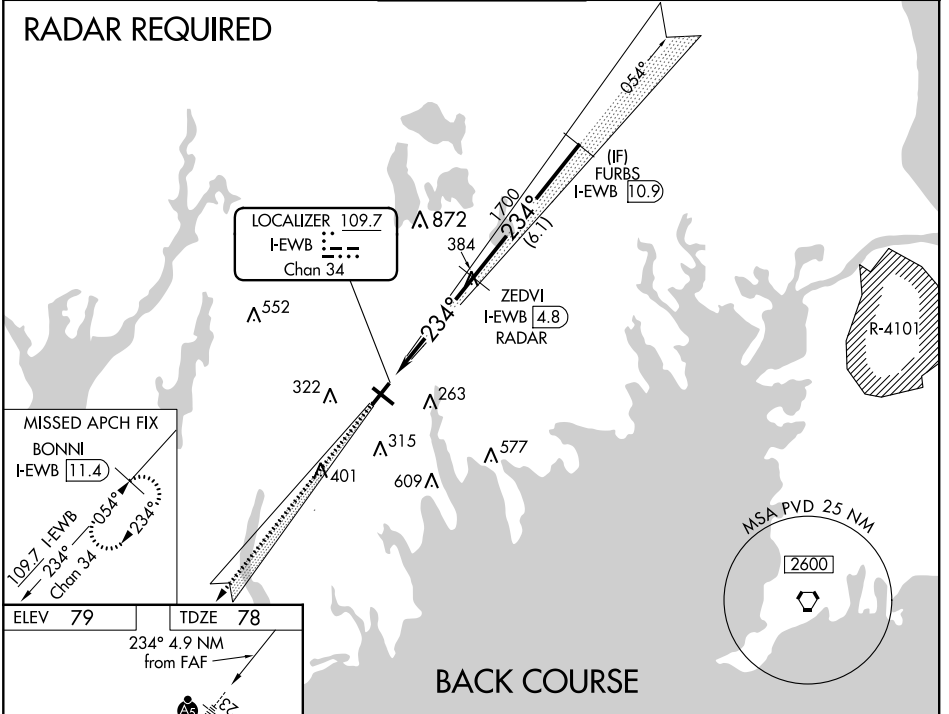
▼ When local altimeter setting not received, use Taunton altimeter setting and increase all MDA 40 feet and increase S-23 Cat C/D visibility 1/8 mile and Circling Cat D visibility 1/4 mile. VDP NA with Taunton altimeter setting. Helicopter visibility reduction below 3/4 SM NA. For inop MALSRL increase S-23 Cat A/B visibility 1/4 mile and Cat C/D visibility 3/8 mile. For inop MALSRL, when using Taunton altimeter setting, increase S-23 Cat A/B visibility 1/4 mile.

MALSRL 

MISSED APPROACH: Climb to 2100 on I-EWB SW course to BONNI/I-EWB 11.4 DME and hold.

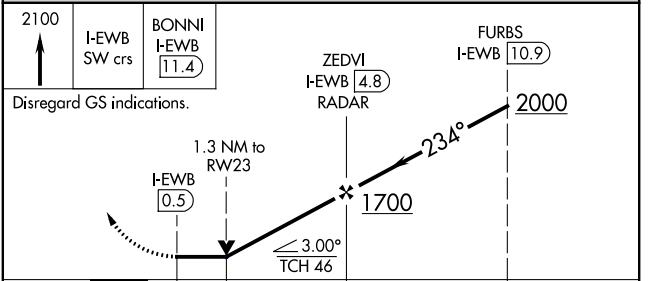
ATIS <b>126.85</b>	PROVIDENCE APP CON* <b>128.7 269.525</b>	NEW BEDFORD TOWER* <b>118.1 (CTAF) 0 239.0</b>	GND CON <b>121.9</b>	UNICOM <b>122.95</b>
-----------------------	---	---	-------------------------	-------------------------

## RADAR REQUIRED



ELEV 79	TDZE 78
234° 4.9 NM from FAF	
MIRL Rwy 14-32	
HIRL Rwy 5-23	
REIL Rwy 32	
FAF to MAP 4.3 NM	
Knots	60 90 120 150 180
Min:Sec	4:18 2:52 2:09 1:43 1:26

## BACK COURSE



2100	I-EWB SW crs	BONNI I-EWB 11.4	ZEDVI I-EWB 4.8	FURBS I-EWB 10.9
Disregard GS indications.				
1.3 NM to RWY 23				
≤ 3.00° TCH 46				
0.6	0.8	3.5 NM	6.1 NM	
CATEGORY	A	B	C	D
S-23	580-3/4 502 (600-3/4)		580-1 502 (600-1)	
CIRCLING	600-1 521 (600-1)	640-1 561 (600-1)	720-1 3/4 641 (700-1 3/4)	940-2 3/4 861 (900-2 3/4)

NE-1, 12 SEP 2019 to 10 OCT 2019

NE-1, 12 SEP 2019 to 10 OCT 2019