

WAAS CH 60938 W05A	APP CRS 054°	Rwy Idg TDZE 70 Apt Elev 79	5400
--	------------------------	---	-------------

RNAV (GPS) RWY 5

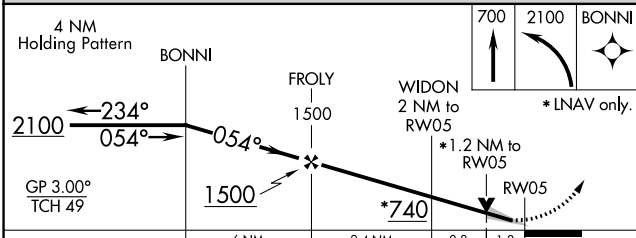
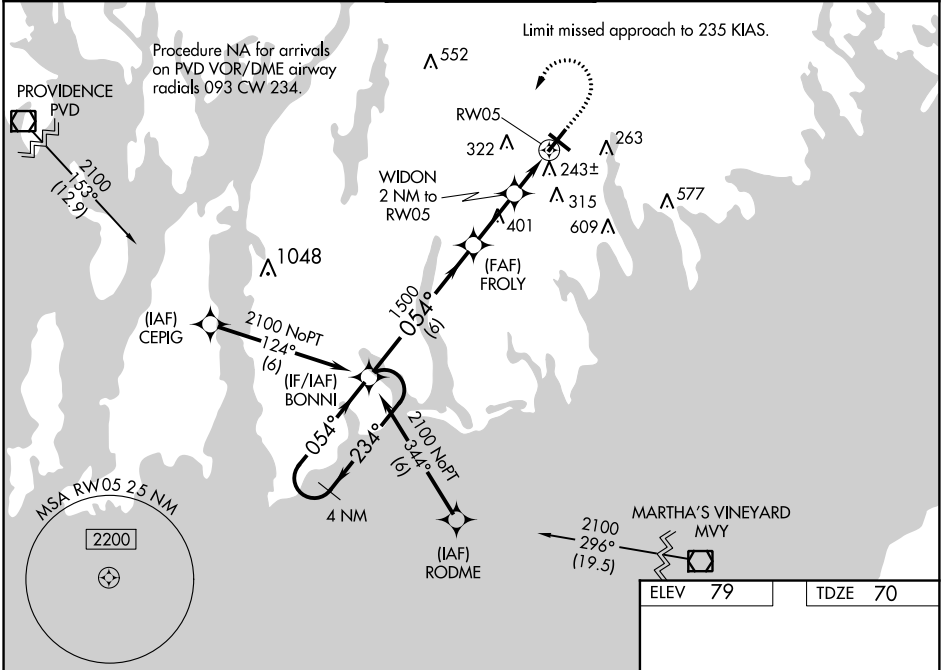
NEW BEDFORD RGNL (E.W.B)

⚠ Baro-VNAV and VDP NA when using Taunton altimeter setting. For uncompensated Baro-VNAV systems, LNAV/VNAV NA below -16°C (4°F) or above 54°C (130°F). DME/DME RNP-0.3
⚠ NA. When local altimeter setting not received, use Taunton altimeter setting and increase all DA 34 feet and all MDA 40 feet. Increase LNAV/VNAV all Cats and LNAV Cat C/D visibility to RVR 5000. Increase Circling Cat D visibility to 3 miles. For inop MALS, when using Taunton altimeter setting, increase LPV all Cats visibility to RVR 4500, LNAV/VNAV all Cats and LNAV Cat C/D visibility to 1 3/8 miles. ** RVR 1800 authorized with use of FD or AP or HUD to DA, NA when using Taunton altimeter setting.

MALS

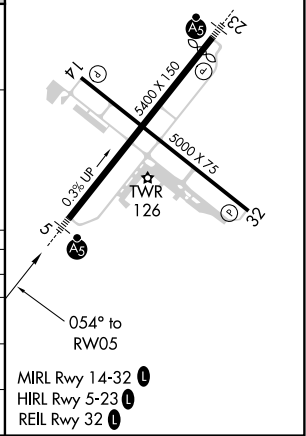
MISSED APPROACH:
 Climb to 700 then climbing left turn to 2100 direct BONNI and hold.

ATIS 126.85	PROVIDENCE APP CON* 128.7 269.525	NEW BEDFORD TOWER* 118.1 (CTAF) 239.0	GND CON 121.9	UNICOM 122.95
-----------------------	---	---	-------------------------	-------------------------



ELEV 79	TDZE 70
----------------	----------------

CATEGORY	A	B	C	D
LPV DA **		270/24	200 (200-1/2)	
LNAV/VNAV DA		453/45	383 (400-7/8)	
LNAV MDA	500/24	430 (500-1/2)	500/40	430 (500-3/4)
C CIRCLING	600-1 521 (600-1)	640-1 561 (600-1)	720-1 3/4 641 (700-1 3/4)	940-2 3/4 861 (900-2 3/4)



NE-1, 12 SEP 2019 to 10 OCT 2019

NE-1, 12 SEP 2019 to 10 OCT 2019