

NDB NOW <b>338</b>	APP CRS <b>242°</b>	Rwy Idg TDZE Apt Elev	N/A N/A <b>13</b>
-----------------------	------------------------	-----------------------------	-------------------------

# COPTER NDB 242°

PORT ANGELES CGAS (NOW)

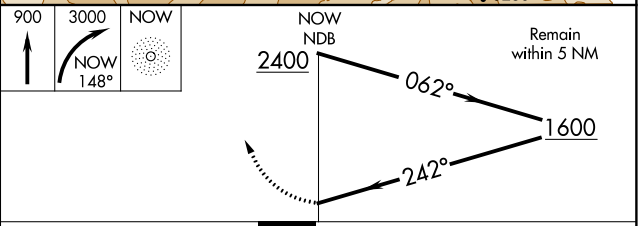
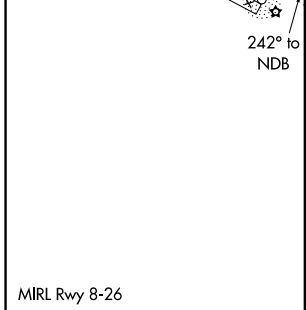
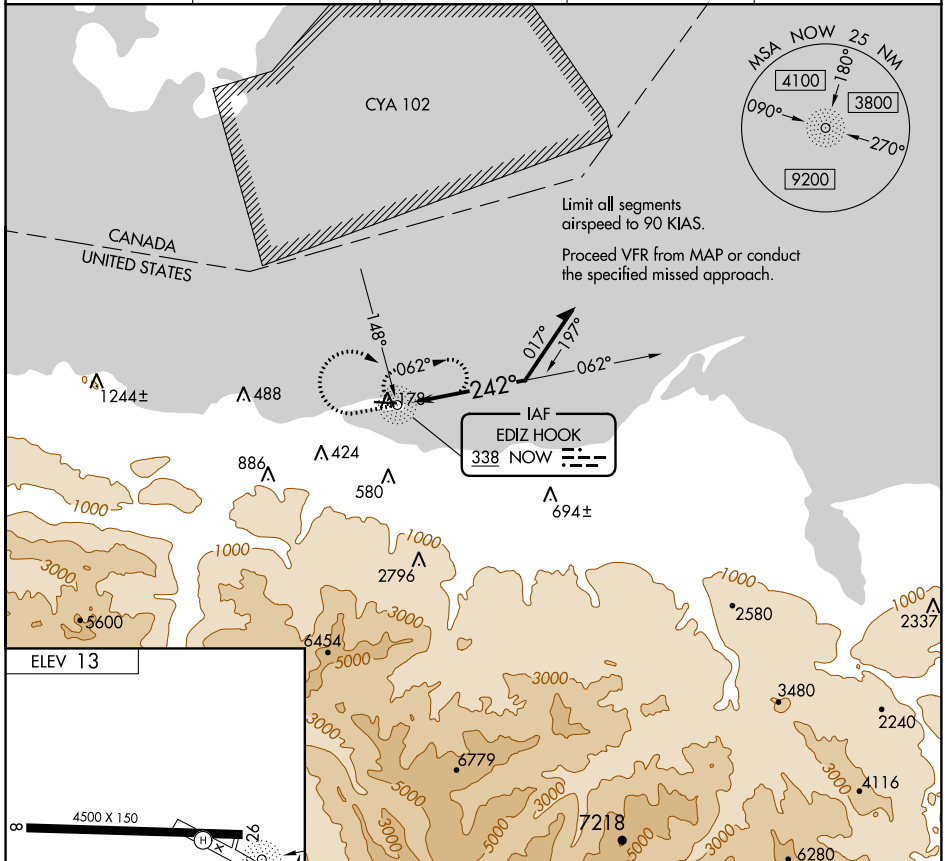
RADAR required for procedure entry

**▼** Prior permission required. Use William R Fairchild Intl altimeter setting; when not received, use Whidbey Island NAS/Ault Field/Oak Harbor altimeter setting and increase MDA 120 feet.

**▲ NA**

**MISSED APPROACH:** Climb to 900 then climbing right turn to 3000 on NOW NDB bearing 148° to NOW NDB and hold, continue climb-in-hold to 3000.

AWOS-3P <b>118.325</b>	WHIDBEY APP CON <b>118.2 285.65</b>	PORT ANGELES AIR <b>127.7 345.0</b>	CLNC DEL <b>124.15</b>	UNICOM <b>122.975 (CTAF)</b>
---------------------------	----------------------------------------	----------------------------------------	---------------------------	---------------------------------



CATEGORY	COPTER
H-242°	600-1 592 (600-1)

NW-1, 12 SEP 2019 to 10 OCT 2019

NW-1, 12 SEP 2019 to 10 OCT 2019