

COPTER RNAV (GPS) RWY 26

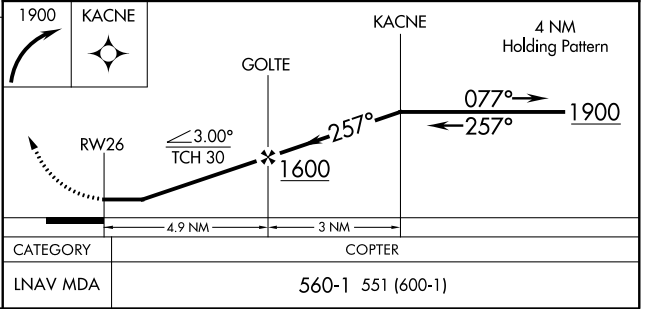
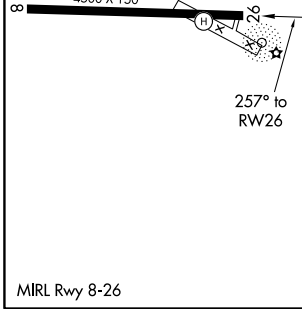
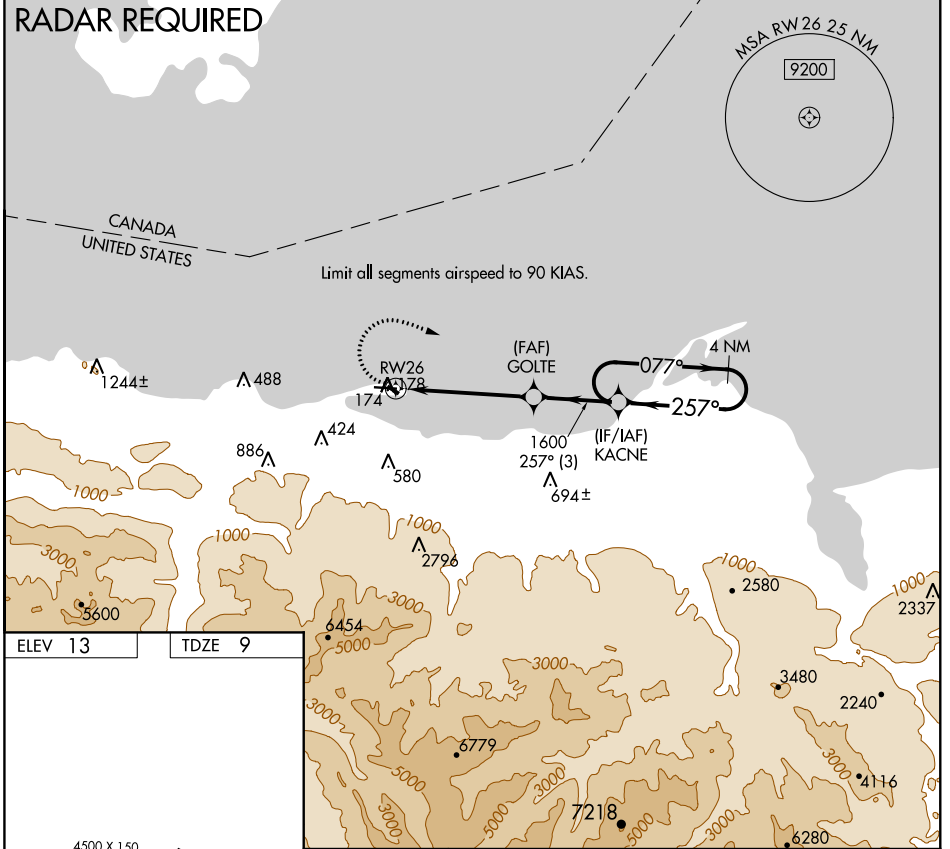
PORT ANGELES CGAS (NOW)

APP CRS 257°	Rwy Idg 4500
	TDZE 9
	Apt Elev 13

▼ Use William R Fairchild Intl altimeter setting; when not received, use Whidbey Island NAS/Ault Field altimeter setting and increase MDA 120 feet. DME/DME RNP-0.3 NA. Prior permission required.

▲ MISSED APPROACH: Climbing right turn to 1900 direct KACNE and hold.

AWOS-3P 118.325	WHIDBEY APP CON 118.2 285.65	PORT ANGELES AIR 127.7 345.0	CLNC DEL 124.15	UNICOM 122.975 (CTAF)
---------------------------	--	--	---------------------------	---------------------------------



NW-1, 12 SEP 2019 to 10 OCT 2019

NW-1, 12 SEP 2019 to 10 OCT 2019