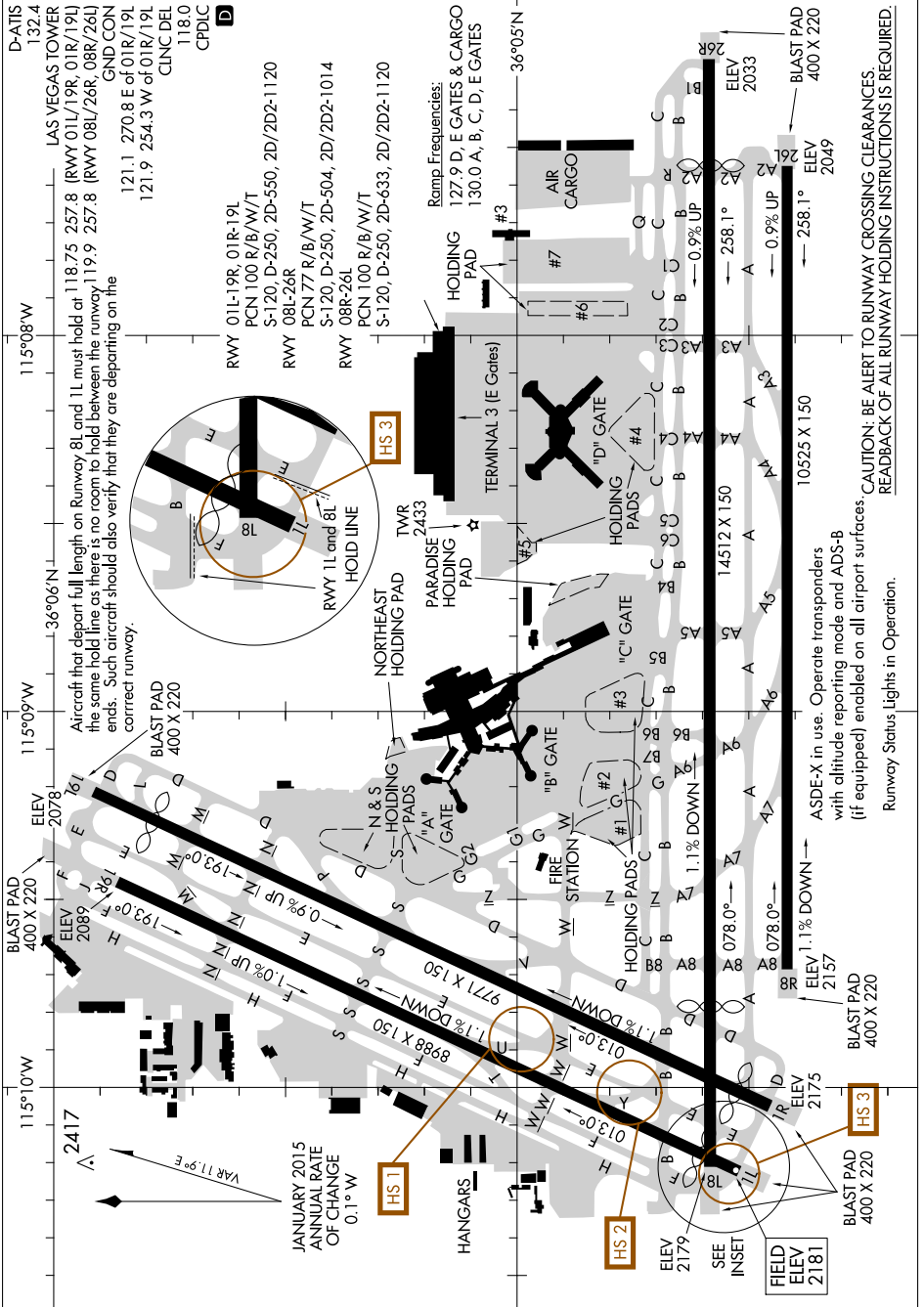


AIRPORT DIAGRAM

AL-662 (FAA)

MC CARRAN INTL (LAS)
LAS VEGAS, NEVADA

SW-4, 12 SEP 2019 to 10 OCT 2019



AIRPORT DIAGRAM

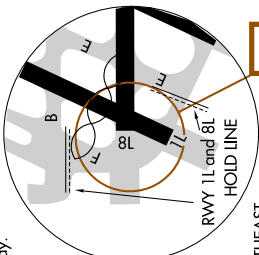
LAS VEGAS, NEVADA
MC CARRAN INTL (LAS)

SW-4, 12 SEP 2019 to 10 OCT 2019

CAUTION: BE ALERT TO RUNWAY CROSSING CLEARANCES.
REDBACK OF ALL RUNWAY HOLDING INSTRUCTIONS IS REQUIRED.

ASDE-X in use. Operate transponders with altitude reporting mode and ADS-B (if equipped) enabled on all airport surfaces.
Runway Status Lights in Operation.

Aircraft that depart full length on Runway 8L and 1L must hold at 118.75 257.8 (RWY 01L/19R, 01R/19L) the same hold line as there is no room to hold between the runway 119.9 257.8 (RWY 08L/26R, 08R/26L) ends. Such aircraft should also verify that they are departing on the correct runway.



JANUARY 2015
ANNUAL RATE
OF CHANGE
0.1° W

VAR 11.9° E