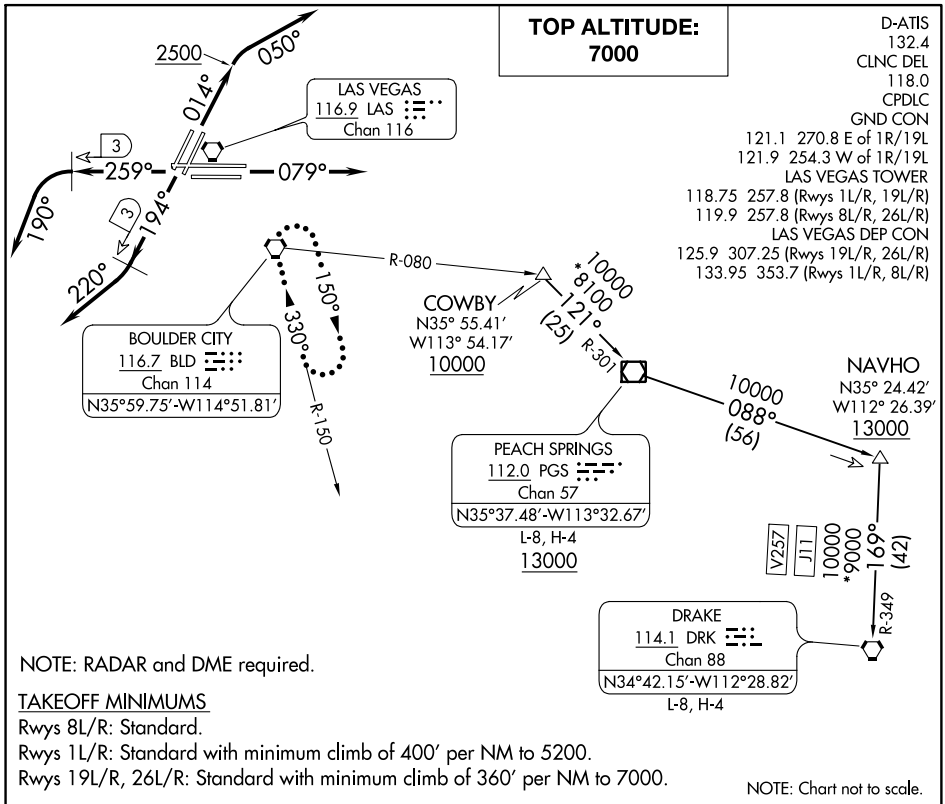


# HOOVER SIX DEPARTURE

AL-662 (FAA)

MC CARRAN INTL (LAS)  
LAS VEGAS, NEVADA



SW-4, 12 SEP 2019 to 10 OCT 2019

SW-4, 12 SEP 2019 to 10 OCT 2019

## DEPARTURE ROUTE DESCRIPTION

**TAKEOFF RUNWAYS 1L/R:** Climb heading 014° to 2500, then climbing right turn heading 050°, thence. . . .

**TAKEOFF RUNWAYS 8L/R:** Climb heading 079°, thence. . . .

**TAKEOFF RUNWAYS 19L/R:** Climb heading 194° until LAS VORTAC 3 DME, then climbing right turn heading 220°, thence. . . .

**TAKEOFF RUNWAYS 26L/R:** Climb heading 259° until LAS VORTAC 3 DME, then climbing left turn heading 190°, thence. . . .

. . . .RADAR vectors to transition or assigned route. Maintain 7000, expect clearance to filed altitude two minutes after departure.

**LOST COMMUNICATIONS:** If no contact with ATC upon reaching 7000, proceed direct BLD VORTAC, then climb in BLD VORTAC holding pattern to appropriate MEA for route of flight.

**DRAKE TRANSITION (HOOVR6.DRK):** From over COWBY on PGS R-301 to PGS VOR/DME, then on PGS R-088 to NAVHO, then on DRK R-349 to DRK VORTAC.

**PEACH SPRINGS TRANSITION (HOOVR6.PGS):** From over COWBY on PGS R-301 to PGS VOR/DME.

# HOOVER SIX DEPARTURE