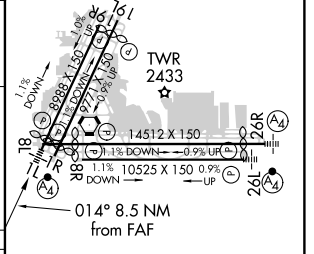
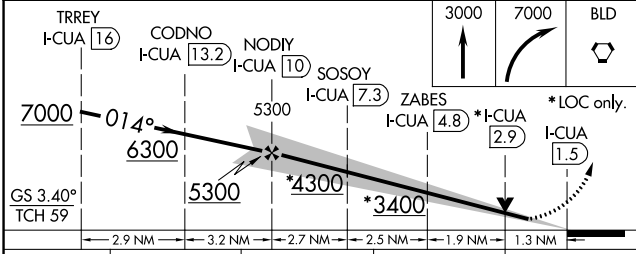
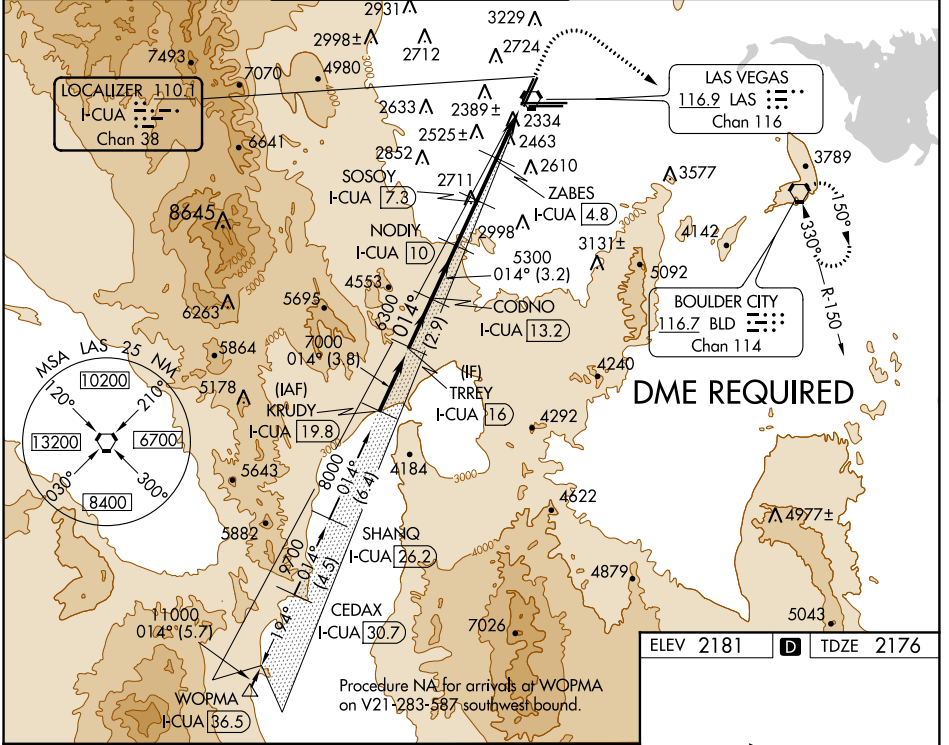


LOC/DME I- CUA 110.1 Chan 38	APP CRS 014°	Rwy Idg TDZE Apt Elev	8401 2176 2181
---	------------------------	-----------------------------	---

ILS or LOC RWY 1L

MC CARRAN INTL (LAS)

D-ATIS 132.4	LAS VEGAS APP CON 125.025 379.15 (West) 125.6 282.2 (East)	LAS VEGAS TOWER 118.75 257.8 (Rwy 1L/19R, 1R/19L) 119.9 257.8 (Rwy 8L/26R, 8R/26L)	GND CON 121.1 270.8 E of 1R/19L 121.9 254.3 W of 1R/19L	CLNC DEL 118.0	CPDLC
	<p>▼ Rwy 1L helicopter visibility reduction below 3/4 SM NA. DME required. For inop ALS, increase S-ILS 1L all Cats visibility to 3/8 SM.</p>		<p>MALSF</p> <p>MISSED APPROACH: Climb to 3000 then climbing right turn to 7000 direct BLD VORTAC and hold, continue climb-in-hold to 7000.</p>		



CATEGORY	A	B	C	D
S-ILS 1L	2460-3/4 284 (300-3/4)			NA
S-LOC 1L	2720-3/4	544 (600-3/4)	2720-1 3/8 544 (600-1 3/8)	NA
C CIRCLING	3020-1 1/4 839 (900-1 1/4)	3040-1 1/4 859 (900-1 1/4)	3100-2 3/4 919 (1000-2 3/4)	NA

ELEV 2181	D TDZE 2176
REIL Rwys 1R, 8R, 19L and 19R MRL Rwy 1R-19L HIRL Rwys 1L-19R, 8L-26R and 8R-26L	

SW-4, 12 SEP 2019 to 10 OCT 2019

SW-4, 12 SEP 2019 to 10 OCT 2019