

LOC/DME FAS <b>110.3</b> Chan 40	APP CRS <b>259°</b>	Rwy Idg TDZE Apt Elev	<b>26R</b> <b>12639</b> <b>2067</b> <b>2181</b>	<b>26L</b> <b>10525</b> <b>2069</b> <b>2181</b>
--	------------------------	-----------------------------	--	--

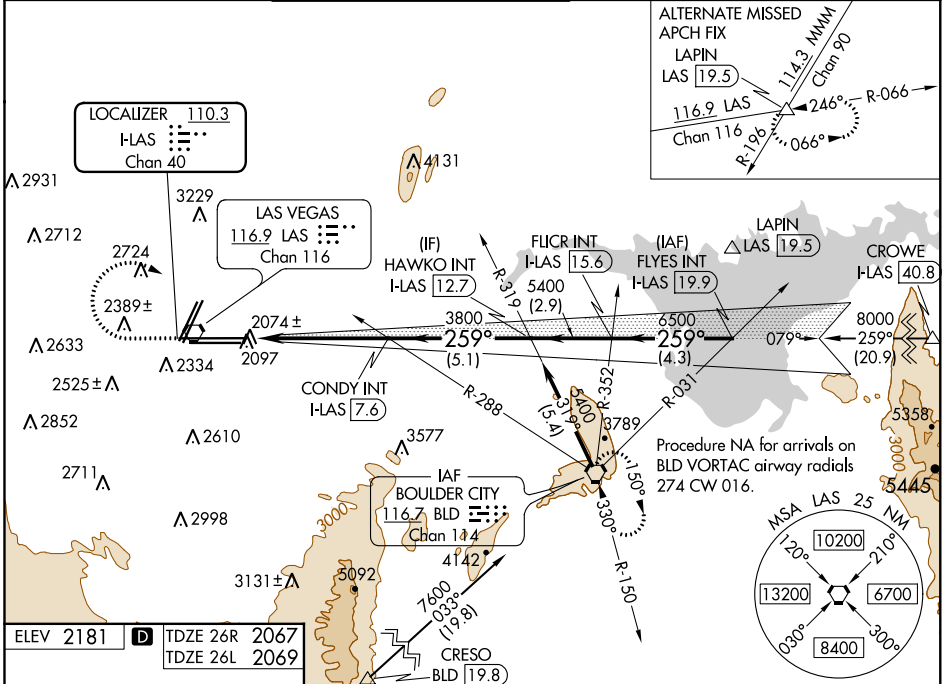
# ILS or LOC RWY 26R

MC CARRAN INTL (LAS)

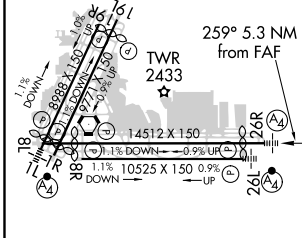
**▼** Inop table does not apply to Sidestep Rwy 26L.  
**▲** For inop ALS, increase S-ILS 26R all Cats visibility to 1 SM, and S-LOC 26R Cat D and E visibility to 1½ SM.

MALS Rwy 26R 	MALSF Rwy 26L 	MISSED APPROACH: Climb to 3200 then climbing right turn to 6000 direct BLD VORTAC and hold, continue climb-in-hold to 6000.
------------------	-------------------	---

D-ATIS <b>132.4</b>	LAS VEGAS APP CON <b>125.025 379.15</b> (West) <b>125.6 282.2</b> (East)	LAS VEGAS TOWER <b>118.75 257.8</b> (Rwy 1L/19R, 1R/19L) <b>119.9 257.8</b> (Rwy 8L/26R, 8R/26L)	GND CON <b>121.1 270.8</b> E of 1R/19L <b>121.9 254.3</b> W of 1R/19L	CLNC DEL <b>118.0</b>	CPDLC
------------------------	--	--	---	--------------------------	-------



ELEV 2181	TDZE 26R 2067	TDZE 26L 2069
-----------	---------------	---------------



REIL Rws 1R, 8R, 19L and 19R	MIRL Rwy 1R-19L	HIRL Rws 1L-19R, 8L-26R and 8R-26L			
FAF to MAP 5.3 NM					
Knots	60	90	120	150	180
Min:Sec	5:18	3:32	2:39	2:07	1:46

CATEGORY	A	B	C	D	E
S-ILS 26R	2359-¾ 292 (200-¾)				
S-LOC 26R	2560-¾ 493 (400-¾)	2560-1½ 493 (400-1½)			
SIDESTEP RWY 26L	2560-1 491 (400-1)	2560-1½ 491 (400-1½)	2560-2 491 (400-2)		
<b>■</b> CIRCLING	3020-1¼ 839 (900-1¼)	3040-1¼ 859 (900-1¼)	3100-2¾ 919 (1000-2¾)	3540-3 1359 (1400-3)	

SW-4, 12 SEP 2019 to 10 OCT 2019

SW-4, 12 SEP 2019 to 10 OCT 2019