

(LAS5.LAS) 17229

LAS VEGAS FIVE DEPARTURE

AL-662 (FAA)

MC CARRAN INTL (LAS)
LAS VEGAS, NEVADA

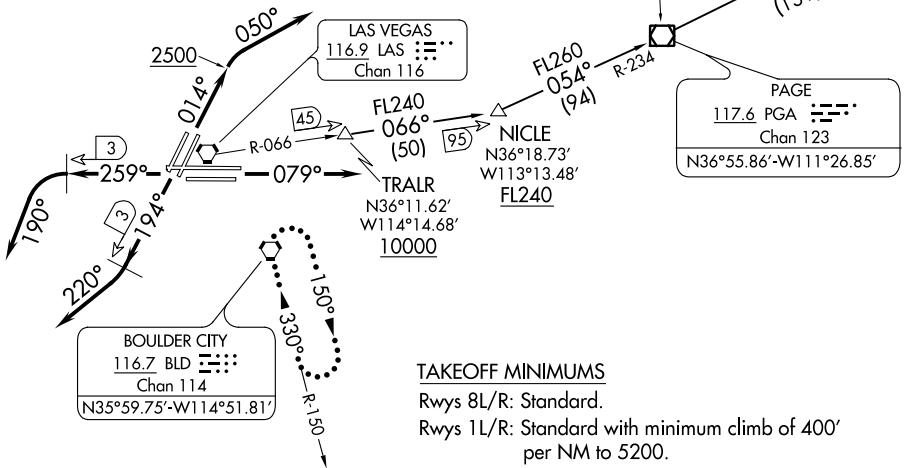
D-ATIS
132.4
CLNC DEL
118.0
CPDLC
GND CON
121.1 270.8 E of 1R/19L
121.9 254.3 W of 1R/19L
LAS VEGAS TOWER
118.75 257.8 (Rwys 1L/19R, 1R/19L)
119.9 257.8 (Rwys 8L/26R, 8R/26L)
LAS VEGAS DEP CON
125.9 307.25 (Rwys 19L/R, 26L/R)
133.95 353.7 (Rwys 1L/R, 8L/R)

MILFORD
112.1 MLF
Chan 58
N38°21.62'-W113°00.79'

BRYCE CANYON
112.8 BCE
Chan 75
N37°41.35'-W112°18.23'

DOVE CREEK
114.6 DVC
Chan 93
N37°48.52'-W108°55.88'
L-9, H-3

**TOP ALTITUDE:
7000**



TAKEOFF MINIMUMS

- Rwys 8L/R: Standard.
- Rwys 1L/R: Standard with minimum climb of 400' per NM to 5200.
- Rwys 19L/R, 26L/R: Standard with minimum climb of 360' per NM to 7000.

NOTE: RADAR and DME required.
NOTE: Chart not to scale.

DEPARTURE ROUTE DESCRIPTION

TAKEOFF RUNWAYS 1L/R: Climb heading 014° to 2500, then climbing right turn heading 050°, thence. . . .

TAKEOFF RUNWAYS 8L/R: Climb heading 079°, thence. . . .

TAKEOFF RUNWAYS 19L/R: Climb heading 194° until LAS VORTAC 3 DME, then climbing right turn heading 220°, thence. . . .

TAKEOFF RUNWAYS 26L/R: Climb heading 259° until LAS VORTAC 3 DME, then climbing left turn heading 190°, thence. . . .

. . . . RADAR vectors to transition or assigned route. Maintain 7000, expect clearance to filed altitude two minutes after departure.

LOST COMMUNICATIONS: If no contact with ATC upon reaching 7000, proceed direct BLD VORTAC then climb in BLD VORTAC holding pattern to appropriate MEA for route of flight.

DOVE CREEK TRANSITION (LAS5.DVC): From over TRALR on LAS R-066 to NICLE, then on PGA R-234 to PGA VOR/DME, then on PGA R-053 and DVC R-233 to DVC VORTAC.

LAS VEGAS FIVE DEPARTURE

(LAS5.LAS) 17AUG17

LAS VEGAS, NEVADA
MC CARRAN INTL (LAS)

SW-4, 12 SEP 2019 to 10 OCT 2019

SW-4, 12 SEP 2019 to 10 OCT 2019