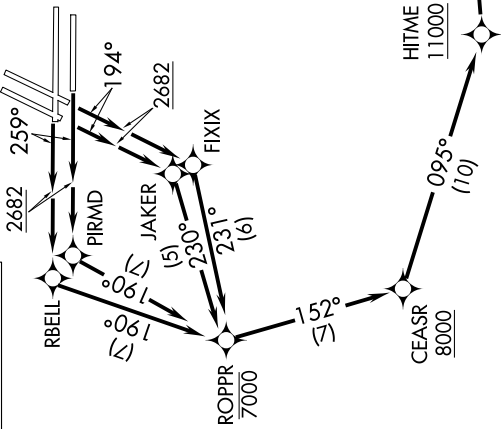


PRFUM FOUR DEPARTURE (RNAV)

AL-662 (FAA)

MC CARRAN INTL (LAS)
LAS VEGAS, NEVADA

TOP ALTITUDE:
FL190



D-ATIS 132.4
 CLNCDEL 118.0
 CPDLC
 GND CON
 121.1 270.8 E of 1R/19L
 121.9 254.3 W of 1R/19L
 LAS VEGAS TOWER
 118.75 257.8 (Rwys 1L/19R, 1R/19L)
 119.9 257.8 (Rwys 8L/26R, 8R/26L)
 LAS VEGAS DEP CON
 125.9 307.25

NOTE: DME/DME/IRU or GPS required.
 NOTE: RNAV 1.
 NOTE: For non-GPS equipped aircraft: LAS DME must be operational.
 NOTE: RADAR required.



TAKEOFF MINIMUMS

Rwys 1L/R, 8L/R: NA- air traffic.
 Rwys 19L/R: Standard with minimum climb of 295' per NM to 5200.
 Rwy 26L/R: Standard with minimum climb of 275' per NM to 5600.

(NARRATIVE ON FOLLOWING PAGE)

NOTE: Chart not to scale.