

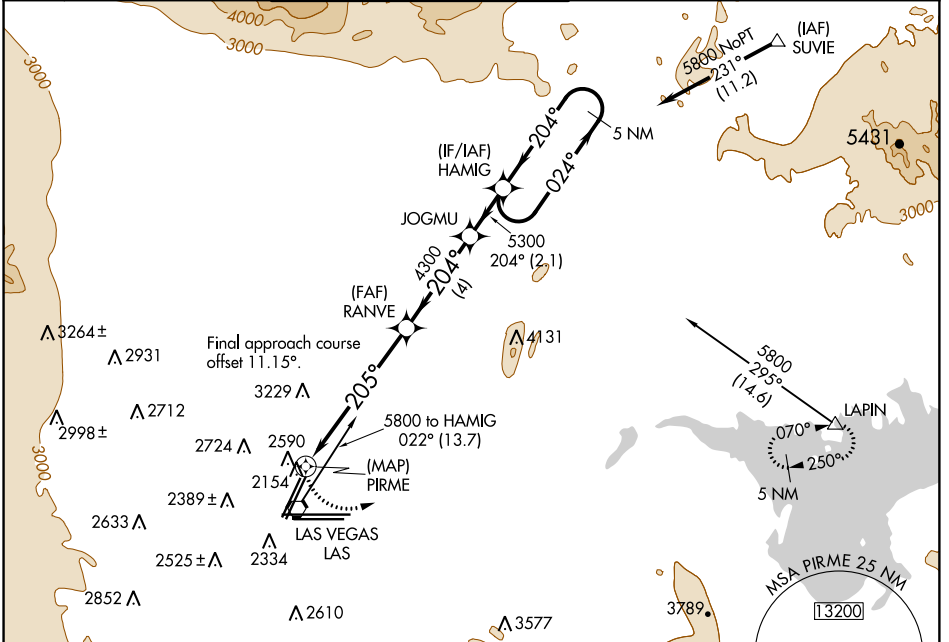
WAAS CH 50142 W19B	APP CRS 205°	Rwy Idg TDZE Apt Elev	8400 2117 2181
--	------------------------	-----------------------------	---

RNAV (GPS) RWY 19R

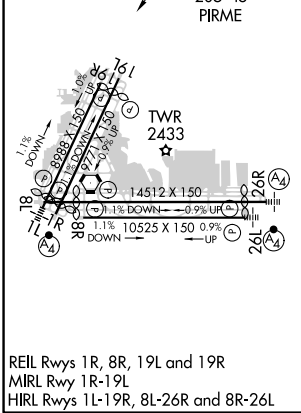
MC CARRAN INTL (LAS)

▼ ▲	Rwy 19R helicopter visibility reduction below ¾ SM NA. DME/DME RNP- 0.3 NA.	MISSED APPROACH: Climbing left turn to 6000 direct LAPIN and hold.
----------------------	--	--

D-ATIS 132.4	LAS VEGAS APP CON 125.025 379.15 (West) 125.6 282.2 (East)	LAS VEGAS TOWER 118.75 257.8 (Rwy 1L/19R, 1R/19L) 119.9 257.8 (Rwy 8L/26R, 8R/26L)	GND CON 121.1 270.8 E of 1R/19L 121.9 254.3 W of 1R/19L	CLNC DEL 118.0	CPDLC
------------------------	--	--	---	--------------------------	-------



ELEV 2181	D	TDZE 2117
------------------	----------	------------------



6000	LAPIN	VGSI and descent angles not coincident (VGSI Angle 3.00/TCH 80).	HAMIG	5 NM Holding Pattern
<p>1.2 NM to PIRME</p> <p>3.06° TCH 60</p> <p>205°</p> <p>4300</p> <p>5300</p> <p>204°</p> <p>024°</p> <p>5800</p>				
<p>0.5 1.2 NM 5 NM 4 NM 2.1 NM</p>				
CATEGORY	A	B	C	D
LP MDA	2700-1	583 (600-1)	2700-1¼	583 (600-1¼)
LNAV MDA	2880-1 763 (800-1)	2880-1¼ 763 (800-1¼)	2880-2½	763 (800-2½)
C CIRCLING	3020-1¼ 839 (900-1¼)	3040-1¼ 859 (900-1¼)	3100-2¾ 919 (1000-2¾)	3540-3 1359 (1400-3)

LAS VEGAS, NEVADA
Amdt 2 17AUG17

36°05'N-115°09'W

RNAV (GPS) RWY 19R

SW-4, 12 SEP 2019 to 10 OCT 2019

SW-4, 12 SEP 2019 to 10 OCT 2019