

RNAV (GPS) RWY 1R

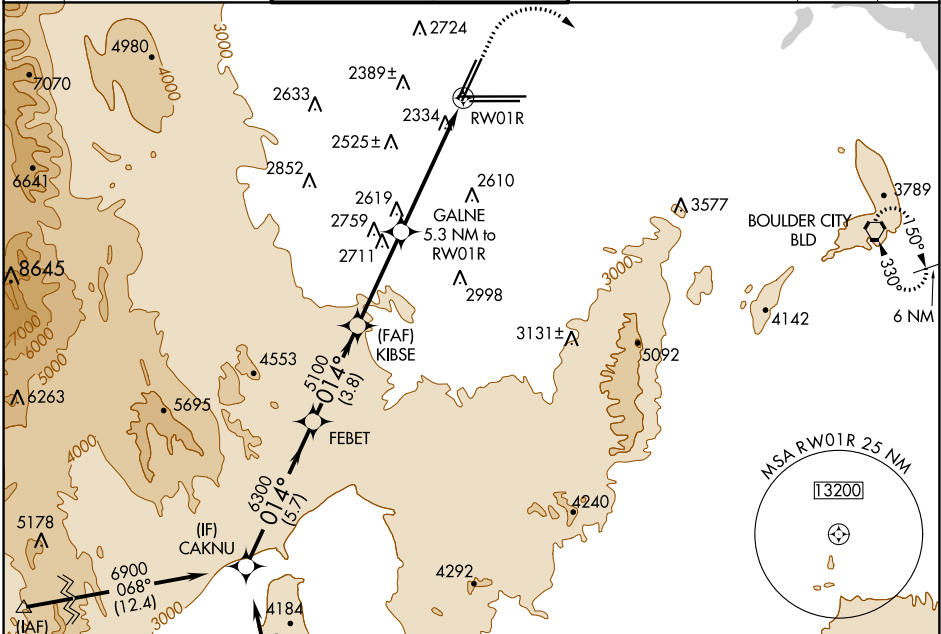
MC CARRAN INTL (LAS)

WAAS CH 42800	APP CRS 014°	Rwy ldg 8782
W01A		TDZE 2170
		Apt Elev 2181

▼ For uncompensated Baro-VNAV systems, LNAV/VNAV NA below -1°C (31°F) or above 52°C (126°F).
▲ Rwy 1R helicopter visibility reduction below ¾ SM NA.
 DME/DME RNP-0.3 NA.

MISSED APPROACH: Climb to 2800 then climbing right turn to 6000 direct BLD VORTAC and hold, continue climb-in-hold to 6000.

D-ATIS 132.4	LAS VEGAS APP CON 125.025 379.15 (West) 125.6 282.2 (East)	LAS VEGAS TOWER 118.75 257.8 (Rwy 1L/19R, 1R/19L) 119.9 257.8 (Rwy 8L/26R, 8R/26L)	GND CON 121.1 270.8 E of 1R/19L 121.9 254.3 W of 1R/19L	CLNC DEL 118.0	CPDLC
---------------------	--	--	---	-----------------------	-------

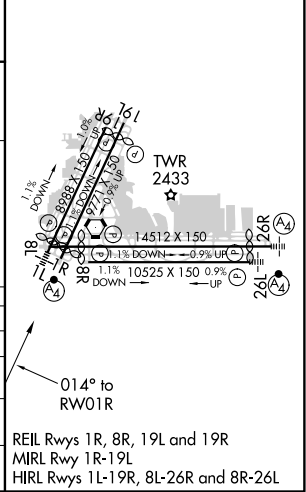


ELEV 2181	D TDZE 2170
------------------	---------------------------

VGSI and RNAV glidepath not coincident (VGSI Angle 3.00/TCH 76).

	2800	6000	BLD
	↑	↘	⬡
CAKNU	FEBET	KIBSE	GALNE
6900	6300	5100	5.3 NM to RW01R
GP 3.00°			*1.9 NM to RW01R
TCH 60			RW01R
	5.7 NM	3.8 NM	3.7 NM
			3.4 NM
			1.9 NM
CATEGORY	A	B	C
LPV DA	2468-7/8		298 (300-7/8)
LNAV/VNAV DA	2633-1 1/2		463 (500-1 1/2)
LNAV MDA	2860-1	690 (700-1)	2860-2 690 (700-2)
C CIRCLING	3020-1 1/4 839 (900-1 1/4)	3040-1 1/4 859 (900-1 1/4)	3100-2 3/4 919 (1000-2 3/4) 3540-3 1359 (1400-3)

*RNAV only.



SW-4, 12 SEP 2019 to 10 OCT 2019

SW-4, 12 SEP 2019 to 10 OCT 2019