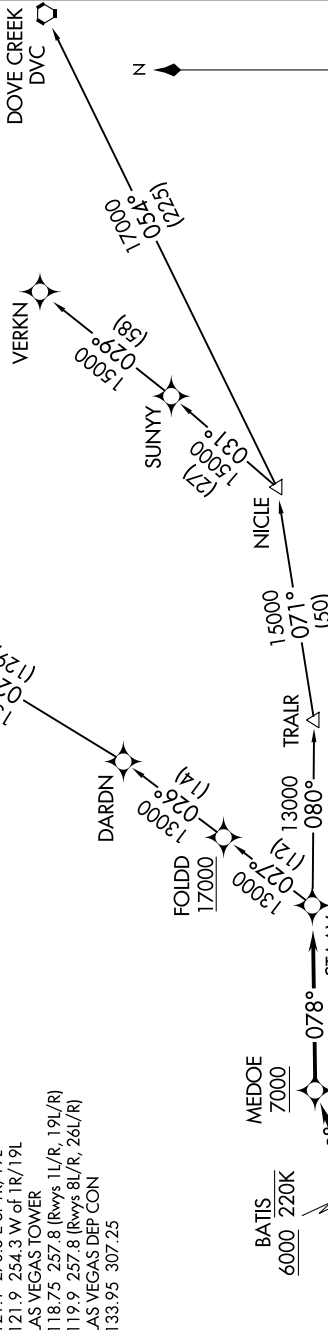


SW-4, 12 SEP 2019 to 10 OCT 2019

D-ATIS 132.4
CLNC DEL 118.0
CPDLC
GND CON 121.1 270.8 E of 1R/19L
121.9 254.3 W of 1R/19L
LAS VEGAS TOWER 118.75 257.8 (Rwys 1L/R, 19L/R)
119.9 257.8 (Rwys 8L/R, 26L/R)
LAS VEGAS DEP CON 133.95 307.25

NOTE: DME/DME/IRU or GPS required.
NOTE: RNAV 1.
NOTE: RADAR required.
NOTE: Takeoff Rwys 26L/R, do not exceed 220K until BATIS.

TOP ALTITUDE:
FL190



DEPARTURE ROUTE DESCRIPTION

TAKEOFF RUNWAY 26L: Climb heading 259° to 2682, then direct POOLZ, then on track 337° to cross TOMIS at or above 5000, then on track 036° to cross BATIS at or above 6000, then on track 058° to cross MEDOE at or above 7000, then on track 078° to cross STAAV at or above 13000. Thence. . . .

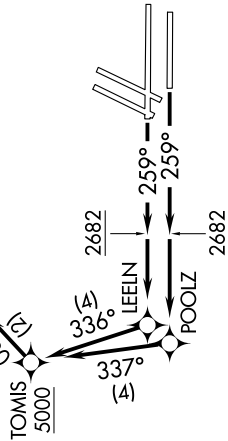
TAKEOFF RUNWAY 26R: Climb heading 259° to 2682, then direct LEELIN, then on track 336° to cross TOMIS at or above 5000, then on track 036° to cross BATIS at or above 6000, then on track 058° to cross MEDOE at or above 7000, then on track 078° to cross STAAV at or above 13000. Thence. . . .

. . . . on (transition). Maintain FL190, expect filed altitude 10 minutes after departure.

DOVE CREEK TRANSITION (STAAV8.DVC)

MILFORD TRANSITION (STAAV8.MLF)

VERKIN TRANSITION (STAAV8.VERKIN)



TAKEOFF MINIMUMS
Rwys 26L/26R: Standard with minimum climb of 313' per NM to 4500.

NOTE: Chart not to scale.

SW-4, 12 SEP 2019 to 10 OCT 2019