

VORTAC LAS <b>116.9</b> Chan 116	APP CRS <b>262°</b>	Rwy Idg	26L	26R
		TDZE	<b>10525</b>	<b>12639</b>
			<b>2069</b>	<b>2067</b>
		Apt Elev	<b>2181</b>	<b>2181</b>

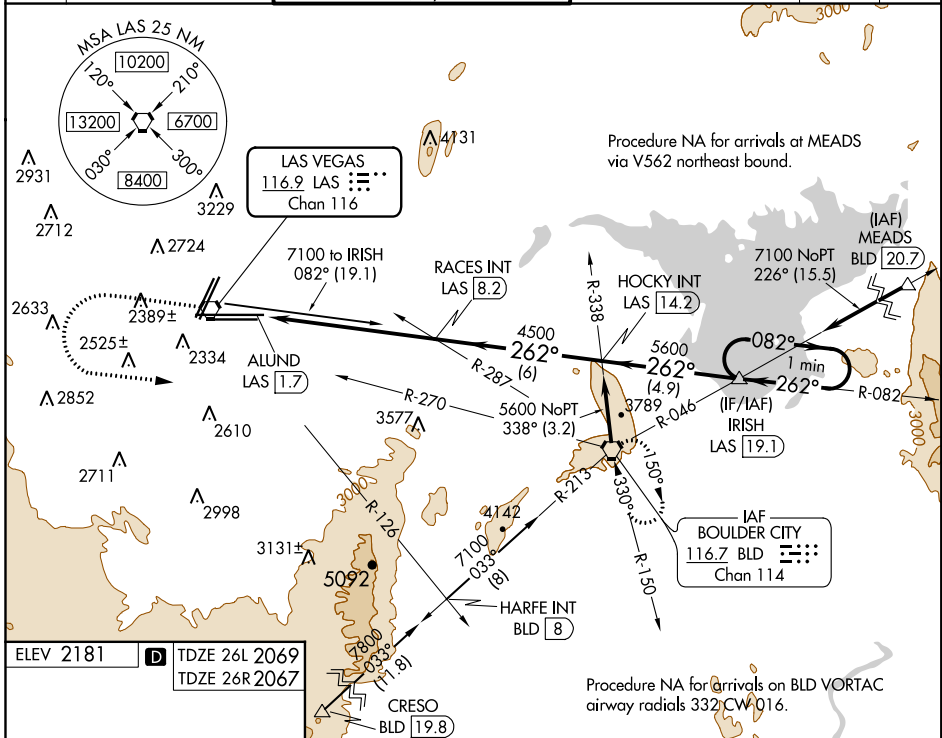
# VOR RWY 26L/R

MC CARRAN INTL (LAS)

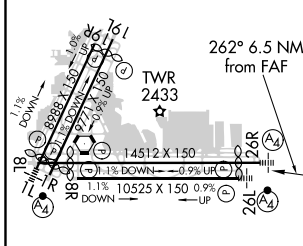
**⚠** For inop ALS, increase S-26L and S-26R Cat D visibility ¼ SM.

MALSF Rwy 26L	MALS Rwy 26R	MISSED APPROACH: Climb to 4000 then climbing left turn to 6000 on heading 074° and BLD R-270 to BLD VORTAC and hold.
---------------	--------------	--

D-ATIS <b>132.4</b>	LAS VEGAS APP CON <b>125.025 379.15</b> (West) <b>125.6 282.2</b> (East)	LAS VEGAS TOWER <b>118.75 257.8</b> (Rwy 1L/19R, 1R/19L) <b>119.9 257.8</b> (Rwy 8L/26R, 8R/26L)	GND CON <b>121.1 270.8</b> E of 1R/19L <b>121.9 254.3</b> W of 1R/19L	CLNC DEL <b>118.0</b>	CPDLC
------------------------	--	--	---	--------------------------	-------



ELEV 2181	<b>D</b> TDZE 26L 2069 TDZE 26R 2067
-----------	---

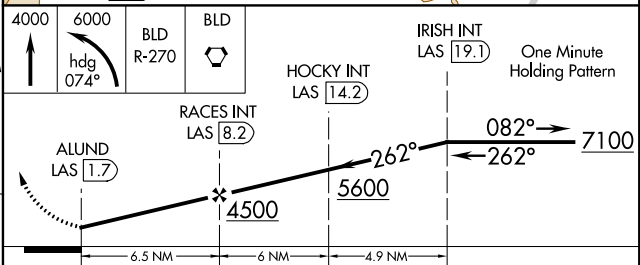


REIL Rwy 1R, 8R, 19L and 19R  
MIRL Rwy 1R-19L  
HIRL Rwy 1L-19R, 8L-26R and 8R-26L

FAF to MAP 6.5 NM

Knots	60	90	120	150	180
Min:Sec	6:30	4:20	3:15	2:36	2:10

**C** CIRCLING



CATEGORY	A	B	C	D
S-26L	2720-¾ 651 (600-¾)		2720-1½ 651 (600-1½)	
S-26R	2720-¾ 653 (600-¾)		2720-1½ 653 (600-1½)	
<b>C</b> CIRCLING	3020-1¼ 839 (900-1¼)	3040-1¼ 859 (900-1¼)	3100-2¾ 919 (1000-2¾)	3540-3 1359 (1400-3)

SW-4, 12 SEP 2019 to 10 OCT 2019

SW-4, 12 SEP 2019 to 10 OCT 2019