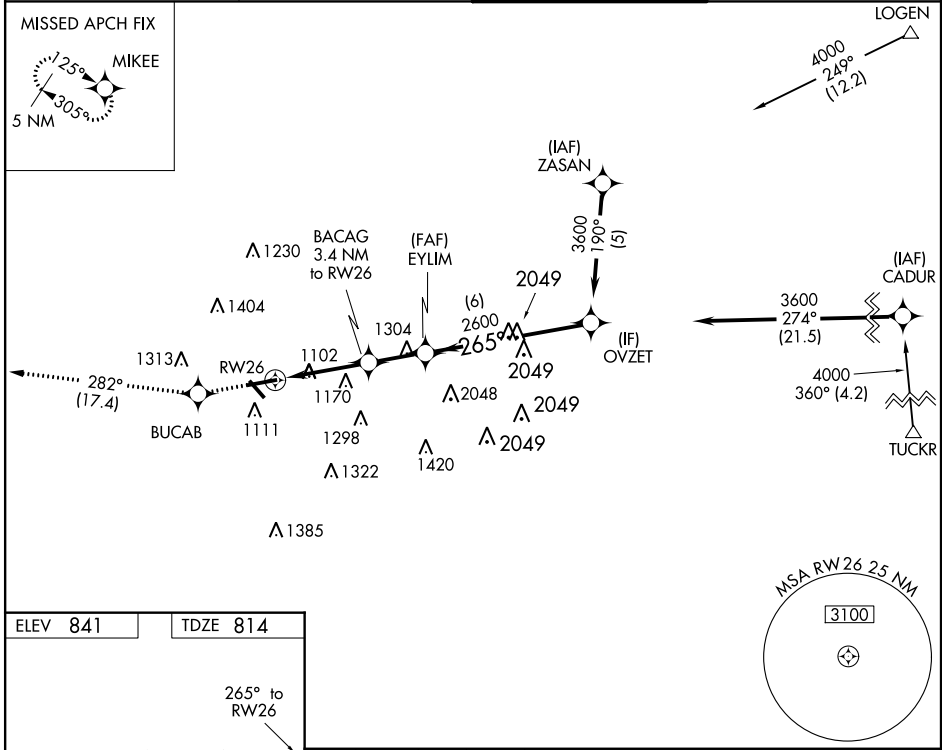


WAAS CH 65930 W26A	APP CRS 265°	Rwy Idg TDZE Apt Elev	5797 814 841
--	------------------------	-----------------------------	---

RNAV (GPS) RWY 26

FULTON COUNTY AIRPORT-BROWN FIELD (F'TY)

RNP APCH.		MISSED APPROACH: Climb to 4000 direct BUCAB and on track 282° to MIKEE and hold.	
<p>▼ Circling Rwy 14, 32 NA at night. ▲ Rwy 26 helicopter visibility reduction below ¾ SM NA.</p>		ATIS 120.175	ATLANTA APP CON 121.0 268.7
		FULTON COUNTY TOWER 118.45 257.8	GND CON 121.7 348.6



ELEV 841	TDZE 814
----------	----------

4000 BUCAB tr MIKEE

BACAG 3.4 NM to RWY 26

1.6 NM to RWY 26

1940

EYLIM 2600

3600

3.00° TCH 50

265° to RWY 26

TWR 1013
☆ 969

5797 X 100 X
4128 X 100 X
110° MIP

		OVZET	
	4000	2600	3600
	1.6	1.8	2.1
	1.6	1.8	6
CATEGORY	A	B	C
LP MDA	1360-1	546 (600-1)	1360-1½ 546 (600-1½)
LNAV MDA	1480-1	666 (700-1)	1480-1⅞ 666 (700-1⅞)
C CIRCLING	1480-1 639 (700-1)	1520-1 679 (700-1)	1740-2¾ 899 (900-2¾) 1740-3 899 (900-3)

SE-4, 12 SEP 2019 to 10 OCT 2019

SE-4, 12 SEP 2019 to 10 OCT 2019