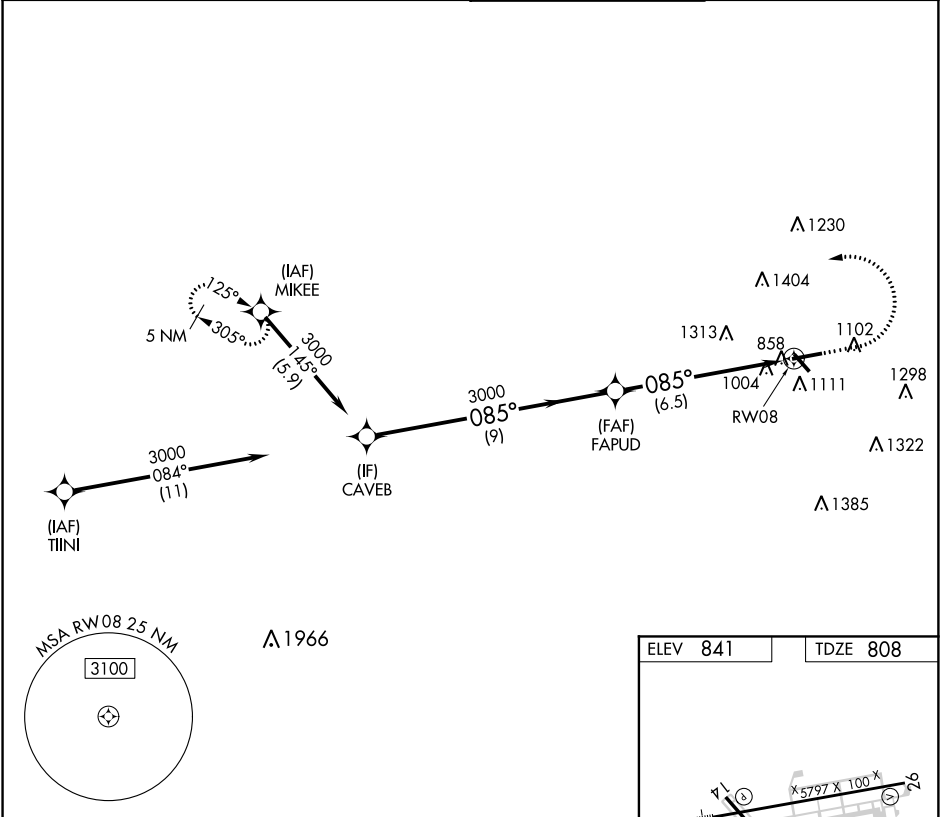


APP CRS	Rwy Idg	5797
085°	TDZE	808
	Apt Elev	841

RNAV (RNP) Z RWY 8

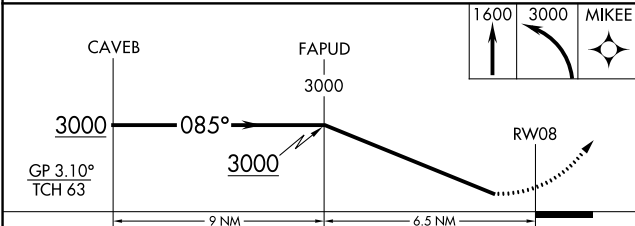
FULTON COUNTY AIRPORT-BROWN FIELD (F'TY)

For uncompensated Baro-VNAV systems, procedure NA below -8°C (18°F) or above 44°C (111°F). GPS required. For inop ALS, increase all Cats visibility to 1 1/4 SM.	MALSR 	MISSED APPROACH: Climb to 1600 then climbing left turn to 3000 direct MIKEE and hold. (Do not exceed 210K until 1600).	
		ATIS 120.175	ATLANTA APP CON 121.0 268.7



SE-4, 12 SEP 2019 to 10 OCT 2019

SE-4, 12 SEP 2019 to 10 OCT 2019



ELEV 841	TDZE 808
----------	----------

HIRL Rwy 8-26
 MIRL Rwy 14-32
 REIL Rwys 14, 26 and 32

CATEGORY	A	B	C	D
RNP 0.30 DA		1363-1 3/8	555 (600-1 3/8)	

AUTHORIZATION REQUIRED